



Gulf Coast Section

APRIL
2014

CONNECT

SPE GULF COAST SECTION NEWSLETTER

Recycling for Drilling & Fracturing: Lower Costs & Good for the Environment

GENERAL MEETING P. 9

What Have We Learned About Fracturing Shales After 12 Years of Microseismic Mapping?

NORTHSIDE P. 21

DEVELOPING AN ARTIFICIAL
HEART WITH ASSISTANCE
FROM CAMERON, AN OIL
FIELD EQUIPMENT MANUFACTURER

RESEARCH & DEVELOPMENT P. 27

ANNUAL TECHNICAL SYMPOSIUM: AUTOMATION, DOES IT BRING VALUE?

DRILLING P. 15

TECHNOLOGY,
CULTURE, AND CHANGE
– EXPLORING CHANGE IN
THE OIL AND GAS MARKET

TECHNOLOGY TRANSFER P. 33



CHAIR'S CORNER

MIKE STRATHMAN
2013-2014 SPE-GCS Chair

At the ATCE last October, the Gulf Coast Section YP's sponsored the 12th Annual PetroBowl. This is a contest for petroleum engineering students to test their skills against each other in order to achieve recognition for their schools and for themselves. Students, schools and SPE have taken note of the popularity. PetroBowl-like events were springing up all over the world, so in discussions with SPE International, the decision was made to take the PetroBowl brand global. We are proud that the SPE Gulf Section Young Professionals (YP's) have led this success and are leading it to the next level. Tony Fernandez and Sathish Kulathu were the co-chairs of PetroBowl in 2013. Tony, Sathish and previous PetroBowl chairs were key in defining the global vision for PetroBowl.

Although international schools attended in previous years, it was a challenge for many due to cost, cultures and timing. Following the ATCE 2013, a Global PetroBowl Work Group was formed. It included YP's from around the globe, SPE International and the Gulf Coast Section. They took the global vision and formulated a plan to implement a pilot approach for ATCE 2014. The key concepts included Regional Qualifiers to reach more schools and rewards to make it financially possible for the winners to attend ATCE. Taking the event global required the work group to expand the question bank, identify venues, consider cultures and reconsider the competition rules. The pilot has two Regional Qualifiers: Asia Pacific was March 28th in Kuala Lumpur, Malaysia, and Africa will be April 25th in Warri, Delta State, Nigeria. The winners of those events will be supported financially so that they can attend and compete in the PetroBowl World Championship at ATCE 2014 in Amsterdam.

The SPE-GCS YP's are at the front of this global vision and we applaud them for their accomplishments. Success of these Regional Qualifier pilots will enable the Global PetroBowl to expand to a truly worldwide process for ATCE 2015 and beyond. The industry is a global business and this expansion reflects that reality.

Thank you to all the members of the Global Work Group and in particular the YP members and their companies: Tony Fernandez, Noble Energy; Sathish Kulathu, Sanchez O&G; Nikhil Shindgikar, Schlumberger; Roy Borkhoche, Baker Hughes; Mitchell Sherston, Apache; Charles Meyer, ExxonMobil; Leonel Perez, Ecopetrol; Etta Agbor, Shell; Katie Horner, Chevron; and Chris Giuffreda, ConocoPhillips.

The SPE Gulf Coast Section was a Platinum Sponsor of the 2014 Student Summit at Texas A&M. Over the course of the 3-day event, 220 students from 17 universities both in the US and China: listened to speakers and panel sessions; visited vendor exhibitions; networked; had

the opportunity to learn from 5 site visits, and enjoyed a golf tournament. Thank you to Valerie Walker who represented the Section and spoke about the value of SPE. Overall, the 2014 Student Summit was a huge success. Congratulations to Michael Stewart, Student Summit Director SPE-TAMU Chapter and the team that supported him for a job well done.

In February, we had our first ever Movie Night. Attendance reached 116 and was a great multi-generational mix. They watched the documentary FrackNation and heard renowned experts discuss the important topic of fracturing. We would like to thank our sponsors: Flotek, Baker Hughes, Schlumberger, Halliburton, FTI Consulting, HDR and ERM. They made this event more affordable and provided great content in the discussion. Thanks to Trey Shaffer, Pavitra Timbalia, Kathy Galpin and Chet Teaford who were key in making this a success.

Do not forget Annual Golf Tournament is April 14. Sign up and have some fun!

THOUGHT YOU SHOULD KNOW...

SPE has a Certification Program for petroleum engineers. The particulars are found on SPE.org under the Training tab. The benefits of having a certificate include: recognition for your compliance with industry standards, demonstration of your commitment to the profession and expansion of your technical knowledge. An exam is required, but can be waived if you have passed a written competency exam. The SPE also offers a review course for the Professional Engineer Registration required in certain states. See the SPE site for details.

We want you to be involved with the section's activities, as the GCS will be better with everyone's active involvement. I personally welcome your comments and ideas to help the SPE Gulf Coast Section serve you and your career better. Please contact me at mike-strathman@att.net.



FEATURES

April 2014

STUDY GROUPS

RESEARCH & DEVELOPMENT
4/3/14

Developing an Artificial Heart with Assistance

P. 27

NORTHSIDE
4/8/14

What Have We Learned About Fracturing Shales After 12 Years of Microseismic Mapping?

P. 21

PETRO-TECH
4/8/14

GIS Tips and Tricks for Data QC and Analysis

P. 25

WESTSIDE
4/9/14

Examination of Fracturing Completion Reliability Based on Intra-Well Pressure Interference

P. 29

GENERAL MEETING
4/10/14

Recycling for Drilling & Fracturing: Lower Costs & Good for the Environment

P. 9

PERMIAN BASIN
4/15/14

The Petroleum Future

P. 23

HEALTH SAFETY & ENVIRONMENT
4/22/14

Leveraging Sustainability in the Oil & Gas Supply Chain

P. 17

COMPLETIONS & PRODUCTION
4/23/14

Fracturing Fluids in the Eagle Ford Shale: Characteristics, Compositions, & Case Histories

P. 13

COVER PHOTO TAKEN BY :
Beth Weigel in South Dakota

PROJECTS FACILITIES &
CONSTRUCTION

4/23/14 & 4/30/14

Spring Lecture Series

P. 26

INTERNATIONAL

4/23/14

Speaker Luncheon - Maersk Oil: A Global Oil and Gas Company

P. 19

RESERVOIR

4/24/14

Integrated Reservoir Approach to Unconventional Development

P. 28

BUSINESS DEVELOPMENT

4/30/14

Oasis and the Williston Basin: A Tale of Opportunity, Growth, and Efficient Exploitation

P. 11

DRILLING

4/30/14

Annual Technical Symposium: Automation, Does It Bring Value?

P. 15

MORE

AWARDS &
SCHOLARSHIP BANQUET
5/27/14

P. 33

OIL PATCH

P. 35

EVENT RECAP

P. 41

COMMITTEES

YOUNG PROFESSIONALS
4/10/14

Financial Investment Seminar and Networking Social

4/17/14

YP Spring Networking Social

AUXILIARY

4/11/14

P. 31

TECHNOLOGY TRANSFER
4/30/14

Technology, Culture, and Change – Exploring Change in the Oil and Gas Market

P. 33

CAREER MANAGEMENT

4/9/14

Ethics Seminar

P. 35

SPORTING CLAYS

6/6/14

P. 36-38

GOLF

4/14/14

P. 39

IN EVERY ISSUE

SPE-GCS MEMBERSHIP REPORT

MEMBERSHIP HIGHLIGHTS

P. 5

THEN & NOW

P. 6

THU
April 10

7:30 AM TO 10:30 AM

BOARD OF DIRECTORS MEETING

LOCATION

*SPE Houston Office
10777 Westheimer Rd.
Suite 1075
Houston, TX 77042*

EVENT CONTACT

*Sharon Harris
713-457-6821 EXT. 821
713-779-4216 FAX
sharris@spe.org*



Trust your ride?

one reliable solution. Entero[®] MOSAIC[™]

With over ten years of continuous progress and innovation for corporate reserves and evaluations, Mosaic has the product stability and client responsiveness that E&P companies have come to expect. Discover what it's like to have a system and team you can depend on to achieve your end goal.

- Better Productivity
- Higher Efficiency
- Faster Speed
- Trusted Information

Expect More. Accomplish More. Learn More at www.entero.com/mosaic

entero[®]
energy software

SPE-GCS MEMBERSHIP REPORT

February 2014

FEBRUARY 2014

Total: 12,021

YP: 2,321

JANUARY 2014

Total: 10,237

YP: 1,821

SPE-GCS Members	FEBRUARY		JANUARY	
	Total	YP	Total	YP
New Members	308	140	109	49
Reinstated	3	0	0	0
Transferred to Section	5	3	61	30
Unpaid	N/A	N/A	6,621	2,026

Student Members	FEBRUARY		JANUARY	
	Paid	Unpaid	Paid	Unpaid
Texas A&M	569	301	350	448
Rice	21	33	18	36
HCC	37	28	34	31
UH	215	226	151	262
Total	842	588	553	777

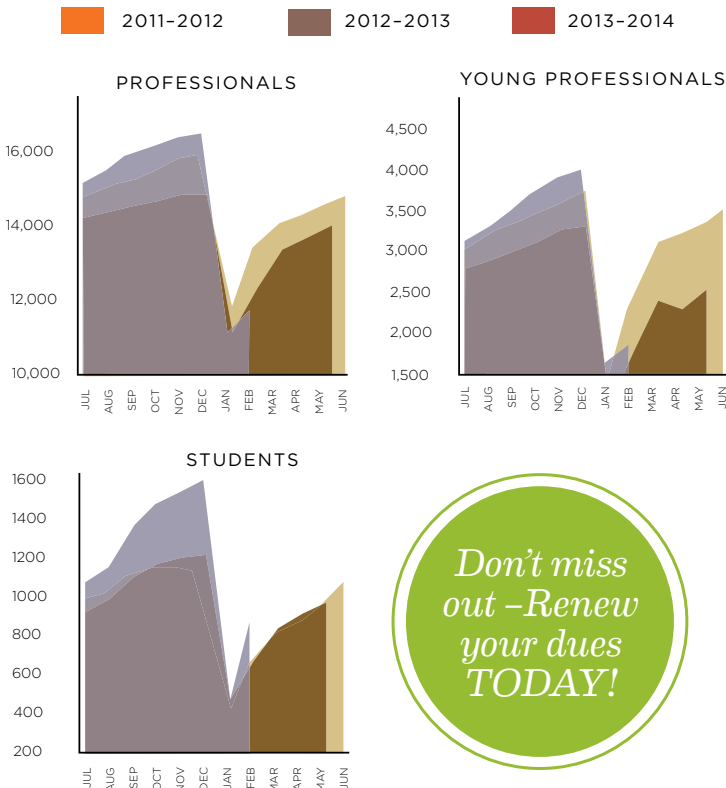
Total Paid/Unpaid	12,863	5,870	10,790	7,398
% Paid	68.7%		59.3%	



MEMBERSHIP HIGHLIGHTS

SPE and SWE (Society of Women Engineers) Houston sections have historically held several joint efforts in supporting STEM (science, technology, engineering and mathematics) initiatives. SPE-GCS was recognized as a gold sponsor at this year's annual SWE FY14 Region C Conference. This energizing annual event was co-hosted by Rice University and the University of Houston science and engineering students.

The conference offered multiple informational sessions including a dynamic leadership panelist, moderated by Jennifer Bell, featuring Pamela Roche, Judy Moses, Mary Studlick and Donna Garbutt in a Q&A session. These professional women leaders spoke of their career paths in the oil and gas industry, offering the students insight on business opportunities, and work/life balance experiences. Riteja Dutta, SPE-GCS YP Program Coordinator, Gabrielle Guerre, SPE-GCS Education Chair and Xuan VandeBerg, SPE-GCS Membership Chair, organized a booth at the student Career Fair to help expose students and promote awareness of SPE's mission. At the Awards Banquet, the representatives were invited to speak on behalf of SPE to the diverse group of students and professionals. In a team presentation, Ms. Guerre, Ms. Dutta and Ms. VandeBerg highlighted the numerous member benefits, including the sponsored student fees to encourage membership.



Don't miss out - Renew your dues TODAY!



The SPE-GCS Membership Committee would like to congratulate Dr. Nathan Meehan for his significant achievement as this section's winner for the 2013 Build the World of SPE membership recruitment contest.

Are you a member who is interested in being recognized and rewarded for increasing the value and benefits of SPE? For more information about how to recruit new members and contest details, visit: <http://www.spe.org/recruit/>

THEN & NOW

Column by
BUDDY WOODROOF



What was the hot new target in South Texas in early 1964? Would you believe the Smackover at 20,000-22,000 ft in La Salle and McMullen counties? And to think, they passed right on by the Eagle Ford at about half that depth!

Pennzoil, over the past 15 months, has plugged over 7,400 wells in Appalachia which were producing a total of 1,000 bbl/day (Yes, less than 1 bbl/day on average per well.)

The exploration picture in western Canada looks promising for this year, with 61 new field discoveries in the first quarter alone, most of which were in Alberta.

Money continues to flow into the Texas treasury as a result of new judgments against slant-hole drillers in East Texas, currently totaling \$725,000 with more to come.

East Texas crude oil - \$3.10/bbl; U.S. active rig count - 1,405



One month after the Exxon Valdez spills 242,000 bbl of North Slope crude oil in Prince William Sound, Alaska, environmental issues involving oil operations offshore and in wilderness areas are heating up.

Amoco is proceeding with plans to cut U.S. staff by 10% and to consolidate its New Orleans personnel and functions into its Houston office.

All sorts of changes associated with the changeover from leaded to unleaded gasoline are in the offing. BP plans to introduce unleaded gasoline in 1,500 outlets by midyear; Shell will discontinue marketing leaded gasoline as soon as current stocks are depleted; and the U.K. has cut the tax on unleaded gasoline and increased the duty on leaded gasoline by a similar amount.

Despite recent scandals involving former Pemex officials and oil workers' union officials, the Mexican government reports that they have no plans to privatize Pemex (Stay tuned on this one!).

WTI crude oil - \$20.04/bbl; U.S. active rig count - 779



Marathon reports that it has cancelled its proposed \$1.5 billion LNG complex in Baja California, while Freeport-McMoRan files an application to develop a \$440 million deepwater LNG terminal near Venice, Louisiana.

Fuel oil slick monitoring continues off the coast of Virginia and Maryland following the explosion last month of a Norwegian tanker that left three crewmen dead and 18 missing. The "horrendous explosion" reportedly occurred in the ship's bow in close proximity to six ethanol tanks.

Three majors (ChevronTexaco, Shell and ExxonMobil) agree to supply crude oil for the Strategic Petroleum Reserve instead of paying cash for certain Gulf of Mexico leases.

Strengthening oil and natural gas prices has accelerated U.S. drilling activity by 313 rigs since January of 2003.

Light sweet crude oil - \$35.22/bbl; Natural gas - \$5.72/MMbtu; U.S. active rig count - 1,160

THE REST OF THE YARN

This month we continue our look back at the life and times of Henry Ford.

An early sign of Henry's egocentrism came in 1912. Since the inception of the Model T four years earlier, Ford had refused to allow any fundamental changes in the car. He believed, with some justification, that any basic design change would lead to an unnecessary manufacturing expense, but he also invested inordinate emotional energy in the car. He felt it was, in a sense, him. He perceived any criticism as a personal attack.

In 1912, Ford vice presidents and engineers got together and built a T with a few modest improvements. Henry was traveling at the time, and the group hoped to surprise and delight him upon his return.

“What is that over there?” Ford asked when he got back. “A new car,” someone said. Ford walked over and inspected it, circled it, gazed at it with his hawk-like intensity. Then he suddenly reached out and grabbed its left-hand front door, and with a furious tug, ripped it off the hinges. Car doors were flimsy in those days, but witnesses were nevertheless stunned at his explosive strength. He then kicked out the car’s windshield and attacked its roof. He did everything he could in the space of a minute to destroy the car, and then he stalked off, leaving behind the shambles of an automobile, a cascade of broken glass, and a group of shaken men.

Another sign of the new egocentric Henry Ford came in 1915, during World War I, when he decided he knew why the international community had been plunged into such chaos. “I have evidence here,” he barked, slapping his hand on a document in his pocket. “Facts!”

Next month, Henry shares his “facts.”

Then & Now April QUIZ

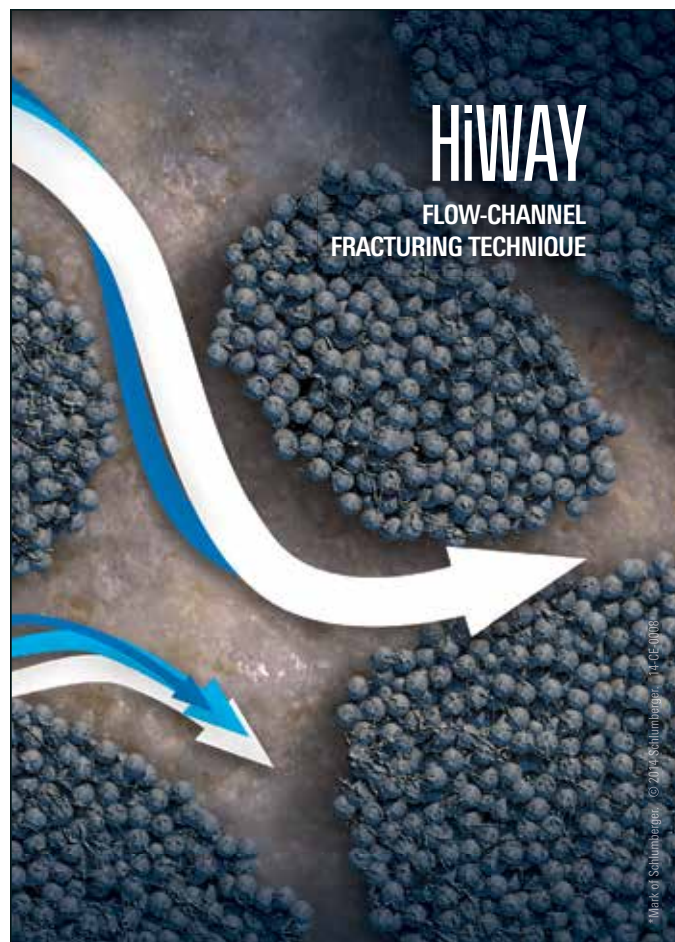
What field was the site
of the first oil production
in Oklahoma?

Answer to March’s Quiz

*In the Babylonian Empire, circa 500 B.C.,
a shekel would buy 600 lb of asphalt, 11 lb of iron,
3 lb of copper, 2 lb of wool, and 1 ounce of
Tyrolean purple dye.*

Congratulations to
February’s winner
**MARIO RODRIGUEZ, PETROLEUM
ENGINEERING STUDENT AT THE
UNIVERSITY OF HOUSTON**

*If you would like to participate in this month’s quiz,
e-mail your answer to contest@spe.org by noon,
April 15th. The winner, who will be chosen
randomly from all correct answers, will receive a
\$50 gift card to a nice restaurant.*



Increase production while saving water, proppant, and time.

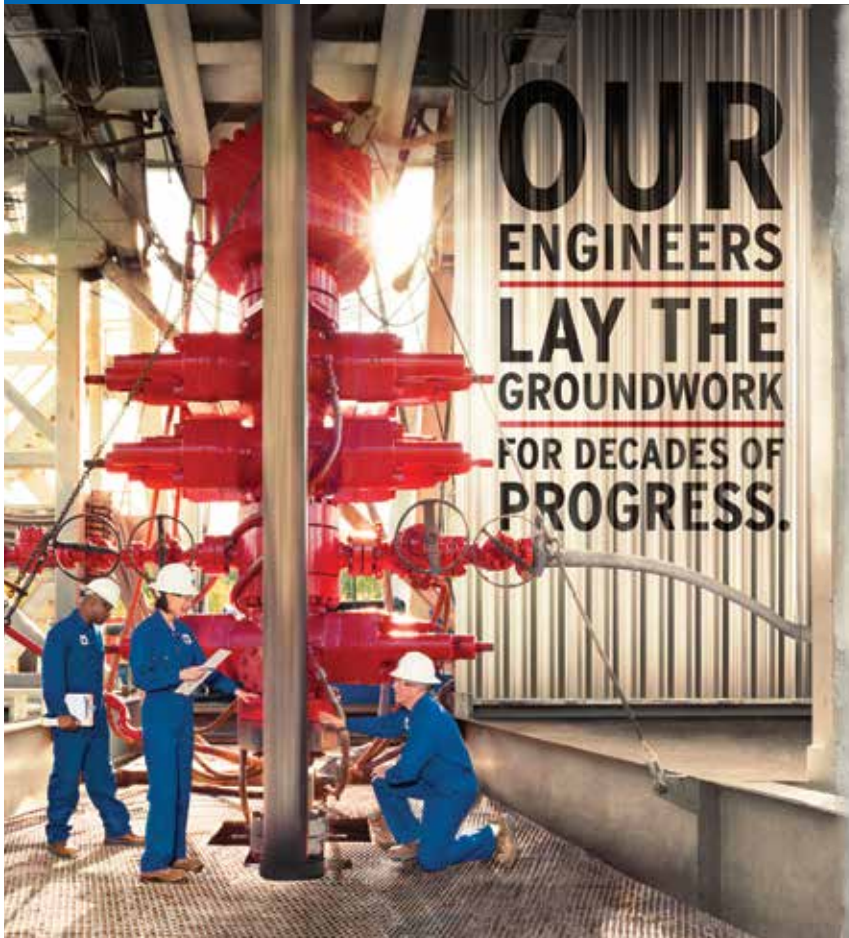
The HiWAY* flow-channel hydraulic fracturing technique creates infinitely conductive pathways within the proppant pack, enhancing productivity and operational efficiency. On average, jobs using the HiWAY technique increase production 20%, use 40% less water, and consume 60% less proppant.

To date, the HiWAY technique has been used in more than 21,000 stages. It has helped

- conserve over 900 million gallons of water
- save 2.8 billion pounds of proppant
- prevent more than 1,000 screenouts
- eliminate over 125,000 road journeys.

Find out more at
slb.com/HiWAY

Schlumberger



**OUR
ENGINEERS
LAY THE
GROUNDWORK
FOR DECADES OF
PROGRESS.**

At Chevron, you'll join a team with the technology to take on big challenges, the integrity to do it responsibly, and the drive to keep the world moving forward. If you're up to the job, visit chevron.com/careers

Chevron is seeking experienced petroleum engineers for production, reservoir, reservoir simulation, drilling and completions positions.

**JOIN THE
CHALLENGE.**



Human Energy™

An equal opportunity employer that values diversity and fosters a culture of inclusion. CHEVRON, the CHEVRON Hallmark and HUMAN ENERGY are registered trademarks of Chevron Intellectual Property LLC. © 2013 Chevron U.S.A. Inc. All rights reserved.



maxoil
PROCESS SOLUTIONS

MAXIMIZING PERFORMANCE THROUGH OPERATIONAL EXCELLENCE

- OPERATIONS ASSURANCE
- SUBSEA PRODUCTION REALIZATION
- FLOW ASSURANCE
- SEPARATION SYSTEMS
- GAS TREATMENT & TRANSPORT
- PRODUCED WATER MANAGEMENT
- SAND & SOLIDS MANAGEMENT
- CONTAMINANTS MANAGEMENT
- CHEMICAL MANAGEMENT
- PROCESS/PRODUCTION OPTIMIZATION
- PROCESS TROUBLESHOOTING
- OPERATIONS PERFORMANCE STRATEGY (OPS)
- SYSTEMS AWARENESS TECHNICAL TRAINING


contact@maxoilsolutions.com • www.maxoilsolutions.com
ABERDEEN • LONDON • HOUSTON • STAVANGER • KUALA LUMPUR • PERTH



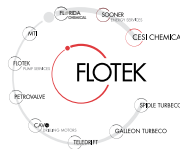
WE ARE DEDICATED TO DELIVERING STRATEGIC VALUE FOR OUR CLIENTS.

Our highly skilled technical team understand the changing and challenging needs of the oil and gas industry and the importance of objective, innovative and cost effective solutions.

ORANGE IS THE NEW GREEN



Flotek's citrus-based, environmentally friendly **CnF**® fracturing additives will revolutionize the way the world thinks about fracturing and will improve your production.



For more information contact cesimkt@flotekind.com or call 832-308-CESI (2374)

THU
April 10

11:30 AM TO 1:00 PM

Recycling for Drilling & Fracturing: Lower Costs & Good for the Environment

This is one instance where you can “get your cake and eat it too”. Almost everyone is driven by the same metric: improve the internal rate of return by driving costs down. Eventually, this approach asymptotes to a limit. Once costs are driven down to a certain level, service quality starts to suffer: mistakes are made, inefficiencies start to outweigh the product cost savings, etc. Clearly, a fresh approach to the problem is needed and recycling offers a new paradigm that will reset the cost bar to a new low level.

This approach is possible if key cornerstones are in place. First, the ingredients need to be green by measurable standards in order to satisfy the regulatory agencies. The drilling fluids must be easy to run and able to obtain a consistently better Rate of Penetration (ROP) than that of Oil-Based Muds (OBM's) and Saline-Based Muds. Then, those cuttings need to be reused to build strong, impenetrable locations that are spill resistant. Finally, fresh or saline frac water and produced water should be reused to build new drilling fluids and frac fluids that are superior to those currently in use today.

Tom Wentzler

Tom Wentzler graduated from Pennsylvania State University with a BS and MS in Engineering. He then graduated from the University of Michigan with an MBA in Operations Research and Statistics. After graduating, he worked for Dow Chemical in Midland, Michigan in chemical plant optimization, as Technical Manager for uranium recovery, and Market Manager for copolymer bead sales into the oil industry. Dow moved him to Houston to run their Clear Brines Business in 1979.

In 1981, Wentzler co-founded Tetra Technologies, which went public in 1991. In 1995, he retired for several years. In 2003, he founded Magnolia Research and later acquired Binder Science LLC. Binder Science uses chemicals to build lease roads, locations and industrial yards. Binder also makes proprietary flowback chemicals, nanoparticles, frac and coil polymer slurries, lubricants and microemulsion cleaners.



Event Info

SPEAKER

Tom Wentzler
President
Binder Science LLC.

LOCATION

Petroleum Club of Houston
800 Bell St.
Houston, TX 77002

EVENT CONTACT

Barry Faulkner
281-627-8790
barryfaulkner@earthlink.net

MEMBERS

\$35

NON-MEMBERS

\$40



**When time is money,
Wellsite Geoscience is
money well spent.**

Whether you're exploring a basin, producing a well or completing a shale play, time is money. That's why Weatherford Laboratories brings a suite of formation evaluation technologies right to the wellsite. Utilizing mud gas and cuttings, these technologies provide detailed data on gas composition, organic richness, mineralogy and chemostratigraphy in near real time. As a result, operators now have an invaluable tool to assist with sweet spot identification, wellbore positioning, completion design and hydraulic fracturing. We call it Science At the Wellsite. You'll call it money well spent.

SCIENCE AT THE WELLSITE™
www.weatherfordlabs.com

Formation Evaluation | Well Construction | Completion | Production
©2013 Weatherford. All rights reserved.



We're
GROWING...

Introducing our Total Managed Displacement Services (TMDS™):

Our proprietary suite of wellbore cleanout tools, non-pollutant displacement chemicals, surface pit cleanout and fluids filtration services, and direct job validation.

**Delivering the ultimate clean wellbore
for maximizing completion success.**



www.abrado-intl.com
Email us at: info@abrado-intl.com

KRYPTOSPHERE™

**More space
to flow™**

KRYPTOSPHERE ultra-conductive, ultra-high strength proppant technology

KRYPTOSPHERE provides twice the baseline conductivity of high-strength proppants at 20,000 psi closure stress. Precision-engineered, mono-sized proppant spheres with exceptional strength, durability and smoothness create more space to flow within your fractures. By maintaining increased conductivity for the life of your deepwater well **KRYPTOSPHERE** delivers higher production, increased EUR and greater ROI.

carboceramics.com/kryptosphere



Production. Enhanced.

WED
April 30

5:00 PM – 7:00 PM

Oasis and the Williston Basin: A Tale of Opportunity, Growth, and Efficient Exploitation

Join us at the Four Seasons Hotel as Oasis Petroleum's Thomas Nusz discusses the 4 strategic elements that comprise their "Resource Conversion" strategy. These include aggressively developing their Williston Basin lease hold position while enhancing returns through focusing on operational and cost efficiencies, adopting and employing leading drilling and completion techniques, and finally, pursuing acquisitions within their core area and other basins consistent with this strategy.

What are the opportunities for (and challenges associated with) downspacing, stacked pay development and increased well density? How has vertical integration impacted operations and costs?

Please join us for this informative discussion. The popular format of a Business & Social Networking hour, with complimentary hors d'oeuvres and a cash bar, followed by an hour and a half long program, including a Q&A session, will begin at 5:00 PM in the Mezzanine.

Thomas B. Nusz

Thomas Nusz is the Chairman and Chief Executive Officer of Oasis Petroleum Inc. He co-founded the company in 2007 with private equity sponsorship from EnCap. In June of 2010, the company completed a successful IPO and is listed on the NYSE with the ticker symbol OAS. Oasis is an oil-weighted, upstream, independent operator with more than 500,000 net acres in the Williston Basin, focused on drilling in the Bakken/Three Forks formations. Nusz and his team have built Oasis into a top-tier pure Williston player with a production of approximately 42 Mboepd and an average annual Total Shareholder Return of over 40% since going public.

Nusz has over 32 years of industry experience, including over 20 years with Burlington Resources, Inc., where he held various engineering and management positions. While he was with Burlington, he was responsible for the Burlington corporate planning group, which led the strategic assessment and portfolio repositioning initiatives starting in 1998. Overall, both the strategic initiatives and the acquisitions contributed to Burlington being consistently one of the leaders in Total Shareholder Return in its E&P peer group in the years leading up to the \$36 billion purchase of Burlington by ConocoPhillips in 2006.

Nusz is a 1982 Petroleum Engineering graduate of Mississippi State University. He is a current member of the National Petroleum Council, a federal advisory committee to the Secretary of Energy of the United States, and he played significant roles in both the 1999 and 2003 NPC studies on North American natural gas.



Event Info

SPEAKER

Thomas B. Nusz
CEO
Oasis Petroleum Inc.

LOCATION

Four Seasons Hotel
1300 Lamar
Houston, TX 77010

EVENT CONTACT

Ricardo Concha
713-890-1418
ricardo.concha@credit-suisse.com

MEMBERS

\$40 in advance, \$50 at door

NON-MEMBERS

\$45 in advance, \$50 at door

HOST AND MODERATOR

Simmons

Broaden your expertise.

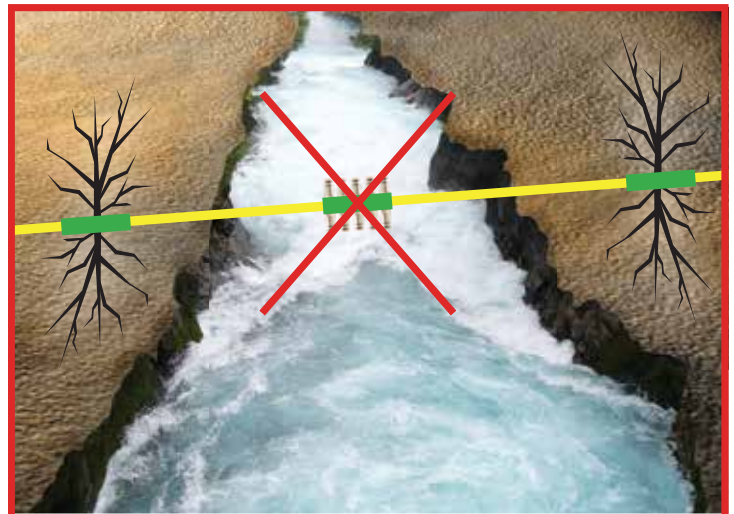


NExT oil and gas training and career development instructs more than 10,000 E&P professionals every year.

With hands-on mentoring and coaching, at a Schlumberger training facility or on the job, NExT training can help you expand your technical expertise.

To view our full list of courses, and to enroll, visit NExTtraining.com

Featured Geology Field Trip
 Practical Fracture Analysis
 of Clastic Reservoirs with Petrel
 June 15–20, 2014
 Casper, Wyoming, USA



Don't send your frac down a river.

Let Geotrace show you how to save **money** and **water** on your frac programs by detecting subtle faults and fracture systems before drilling.



Geotrace
 TECHNOLOGIES

www.geotrace.com

rock @glidem | xochu_river @bigat01 | merquef@com. nozles @WendyKaveney | Dreamstime.com

PREMIUM CONNECTIONS

Meeting your exacting requirements.

SealLock® | WedgeLock®
 TKC™ | TS™
 connection technology



www.huntingplc.com

© 2013 Hunting

Reaching Deeper

With the largest fleet of deep, high-pressure coiled tubing, coupled with basin-specific expertise

Going Further

To find solutions to our customers' wellsite challenges, safely and efficiently

That's the IPS Advantage



Integrated Production Services

www.ipsadvantage.com

Deepwater Drilling Training

John Shaughnessy – SPE member – presents learnings from 36 years of experience: equipment, procedures, potential problems. Classes -

Deepwater Drilling: 5 days

Accelerated Deepwater Drilling: 2 Days

HTHP Drilling: 3 Days

Basic Drilling: 1 Day

Customized and In-House Classes Available

Class details at shaughnessydrillingtraining.com

WED
April 23

11:30 AM TO 1:00 PM

Fracturing Fluids in the Eagle Ford Shale: Characteristics, Compositions, & Case Histories

This presentation will provide information on commonly used frac fluid systems and requirements for conducting successful fracturing treatments in the Eagle Ford Shale. Included in the discussion will be an overview of friction reduced—“slickwater”—fluids, linear gels, and cross-linked frac fluid systems; guidelines on generating proper frac fluids; and the application of common breakers. Background information on commonly used frac fluid recipes and additives, such as pH buffers, biocides, scale inhibitors, instant/delayed cross-linkers, surfactants, and common clay control products will be presented. Additionally, accepted best practices and field-level troubleshooting of frac fluids will be covered, with examples of “good” and “not-so-good” fluids drawn from case histories.

Pete Eichelberger

Pete Eichelberger is Senior Business Development Manager of the WellChem Technologies Division, Nalco Champion. He has over 30 years of experience in functional chemistry for the Energy Industry and 18 years of experience in fracturing fluid chemistry. Prior to joining Nalco, he was Manager, Production Enhancement, GOM, for Baker Hughes Pressure Pumping Services. His involvement in fracturing fluid chemistry and product development chemistry began with Dresser Titan in 1980, which included field analysis for hydraulic fracturing operations in the Austin Chalk, Permian Basin and Canada. Over the last few years, his technical support and field troubleshooting activities have taken him to Siberia, Poland, Italy, Canada, Mexico, Venezuela, Brazil, Argentina and Indonesia. He holds a BA degree in Biology and Chemistry minor from the University of St. Thomas, and has studied Biochemistry, post-baccalaureate at the University of Houston. He is a patent holder in environmentally acceptable drilling fluid additives and production enhancement chemistries.



Event Info

SPEAKER

Pete Eichelberger
Senior Business Development
Manager
Nalco Champion

LOCATION

Greenspoint Club
16925 Northchase Drive
Houston, TX 77060

EVENT CONTACT

Jonathan Godwin
281-921-6526
jgodwin@carboceramics.com

MEMBERS

\$35 in advance, \$40 at door

NON-MEMBERS

\$35 in advance, \$40 at door

LUFKIN*Expect More*

More **SYSTEMS**
More **SERVICES**
More **LOCATIONS**



Pump jacks with legendary quality and reliability have been the reputation of Lufkin for more than 100 years. In that same tradition, Lufkin now offers more artificial lift systems, more support services and more locations to serve operators around the world. These highly engineered solutions, supported by our experienced staff, deliver optimum production from your oil and gas wells.

Now, more systems and services to meet your requirements:

- **Automation**
- **Beam Pumping Units**
- **Hydraulic Pumping Units**
- **Reciprocating Pumps**
- **Progressing Cavity Pumps**
- **Production Optimization**
- **Well Monitoring**
- **Secure Scada**
- **Plunger Lift**
- **Gas Lift**
- **Completion Products**
- **Maintenance & Repair**
- **Training**

The Energy Flows Through Us®
 LUFKIN.COM

TAM SOLUTIONS**PROVEN, PREDICTABLE, PACKER PERFORMANCE****TAM PosiFrac™ Systems:**

With PosiFrac™ you have an all-inclusive, multi-stage system for open-hole hydraulic fracture applications. And you have the experts to run it from service centers in your region. You'll get your completion on depth, on time, with the best swellable packers available. And that's as complete as it gets.



TAM INTERNATIONAL
 Inflatable and Swellable Packers

45 YEARS OF SUCCESS

WELL INTERVENTION

DRILLING & COMPLETIONS

UNCONVENTIONAL RESOURCES

RESERVOIR OPTIMIZATION

www.tamintl.com

MULTI-STAGE COMPLETIONS



"Imitation is the sincerest form of flattery... or is it?"

Only Packers Plus delivers proven, reliable and repeatable results. We have extensive experience to run your jobs efficiently and effectively. Contact us today and let us help you maximize your assets.



DO IT ONCE. DO IT RIGHT.

Packers Plus®
www.packersplus.com

Annual Technical Symposium: Automation, Does It Bring Value?

Automation has become a big part of our industry. As we work to bring on new technologies, data, and related management tools we need to ask: does it bring value? Is it driving us toward improved efficiency, less NPD, and reduced HSE events? How are we using automation effectively and how can we grow this technology to help us with challenges on the horizon? Our Technology Talk Presenters will highlight how they have impacted the industry with Automation technology. The operator panel will weigh in with their perspectives, and we will open up for panel discussion facilitated by Richard Spears.

SCHEDULE OF EVENTS:

7:30 - 8:30 am: Registration, Coffee and Conversation

Keynote/Kick-Off: Richard Spears - Spears & Associates

TECHNOLOGY TALKS

Technology Talk 1: "Evaluation of Closed Loop Downhole Automation Performance and the Potential Economic Benefits of this System"

Tony Pink, National Oilwell Varco

Technology Talk 2: "Developments in Architecture for Drilling Automation"

Clinton Chapman, Schlumberger

Technology Talk 3: "Data Informed and Engineering Guided Autonomous Downhole Drilling System"

Robello Samuel, Halliburton

Technology Talk 4: "Design Aid for Charting a Drilling Automation Roadmap"

Mario Zamora, M-I Swaco

Technology Talk 5: "Subsea Sealing at the Touch of a Button"

—Ben van Bilderbek, Plexus

Technology Talk 6: "From Mechanization to Automation: What's Still Missing?"

Andreas Sadlier, Nabors Industries

Lunch Presentation: "3-D Communications Technology and Oilfield Automation"

Oliver Diaz, Fuel FX

Operator Perspectives: Darren Pais – ExxonMobil, John Willis – Oxy, Matthew Isbel

HESS, Mark Sundland – Anadarko, Patrick Johnson - Shell

Operator Panel Discussion: Facilitated by Richard Spears

Richard Spears

With an engineering degree from Oklahoma State University and graduate work in industrial engineering, Richard Spears has worked in the upstream oil and gas industry since 1979, starting as a field engineer for Halliburton. Today, he is one of the managing directors of Spears & Associates, an oilfield market research firm founded in 1965. The firm has 500 clients worldwide, including all major oil companies, all major service companies and over one hundred private and institutional investors. He has been with the firm since 1985.

In addition to his responsibilities as Chairman of the Board of Abrado International, Spears is on the board of directors of several additional oilfield service companies: Varel International, a global drill bit manufacturer; Federal, a subsea connector manufacturer; Allied Wireline, an openhole and cased hole logging company; and W-Technology, a manufacturer of MWD components. Board responsibilities include Audit, Compliance, Compensation and Strategy. Spears is a 25-year member of the Society of Petroleum Engineers.



Event Info

SPEAKER

Richard Spears
Managing Director
Spears & Associates

LOCATION

Petroleum Club
800 Bell Street, 43rd floor
Houston, TX 77002

EVENT CONTACT

Joe Tison
wtison@gtweed.com

MEMBERS

\$100

NON-MEMBERS

\$125

PHDWIN™

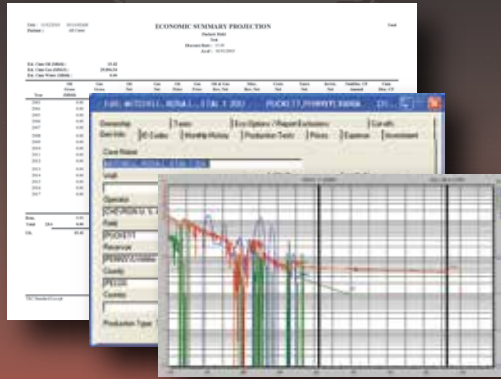
Integrated Economics & Decline Curve Analysis

NOW EVEN MORE POWERFUL WITH

PHDRMS™

Reserves Management System

The *complete solution* for evaluating, managing, and reporting reserves and performance data.



Schedule an **online** presentation
TODAY!

TRC Consultants, LC 888-248-8062 www.phdwin.com

CORROSION-RESISTANT COMPOSITE PIPELINE SOLUTIONS



Flexpipe Systems' composite linepipe products are flexible, reliable and customizable. We are the answer to your next pipeline project.



flexpipesystems.com

Slider

Automated Directional Drilling

IMPROVE YOUR HORIZONTALS



- ON-BOTTOM TOOL FACE ORIENTATION
- INCREASED MOTOR LIFE
- INCREASED ROP & HORIZONTAL REACH CAPABILITY
- ELIMINATES ORIENTATION TIME LOSSES

slb.com/Slider

ELY

Global Hydraulic Fracturing Expertise

281-530-4010
www.elyfrac.com

Leveraging Sustainability in the Oil & Gas Supply Chain

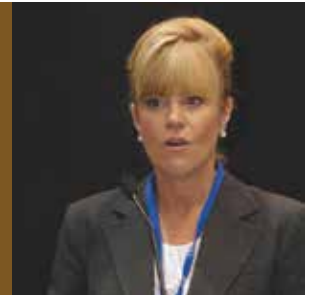
Successful project execution and business operations depend on the performance of a strong supply chain. Weak links in a supply chain may be caused by a range of drivers beyond the safety, financial, quality and schedule indicators that have historically been considered in supplier selection and management. Sustainability aspects including environmental, social and governance issues can weaken supplier performance by causing lost production, supply interruptions, schedule delays, material inefficiencies, price increases, safety impairment, regulatory violations, employee issues and community resentment. This presentation describes elements of ConocoPhillips' Supply Chain Sustainability program as expanded in 2013 to support the improvement of our project execution and operations management through strengthening our supply chain on sustainability drivers that impact our business. A summary of the benefits of collaboration on sustainability issues to both oil and gas companies and suppliers will be presented.

Jan Dell

Jan Dell has extensive experience in corporate and supply chain sustainability programs in industries ranging from the oil and gas sector to consumer products. She is a registered professional chemical engineer (M.S. University of California, Berkeley) with over 25 years of experience with international and national oil companies, and their suppliers, extending across more than 40 countries. She is experienced in technical and policy issues faced by the energy sector in unconventional and conventional fossil fuels, power, renewable energy, climate, water and other environmental issues.

CAREER HIGHLIGHTS INCLUDE:

- Energy, Water and Climate Nexus: Convening Lead Author of the Energy Supply and Use chapter of the 2014 U.S. National Climate Assessment and member of the National Climate Assessment Development and Advisory Committee (NCADAC).
- Creator of WBCSD Global Water Tools and GEMI Local Water Tools: Jan Dell led business groups to develop water risk assessment, management and reporting tools which have been used by over 400 companies.
- Global Energy Projects: Jane Dell led technical, commercial and public policy teams on numerous strategic assessment and project developments for energy companies spanning renewable energy, nuclear, oil sands, climate adaptation, shale production, sour gas and water. She led a Program Management Contractor team responsible for Procurement, Contracting, Owner's Engineer and Information Systems in support of the \$40 Billion Denali Alaska Gas Pipeline Development.



Event Info

SPEAKER

Jan Dell
Supply Chain Sustainability Lead
ConocoPhillips

LOCATION

Petroleum Club
800 Bell Street, 43rd floor
Houston, TX 77002

MEMBERS

\$40

NON-MEMBERS

\$50

STUDENTS

\$10





Completion

SYSTEMS, FLUIDS & TOOLS



Specialized tools assure a debris-free completion

Engineered to enhance completion efficiency, M-I SWACO pre-completion wellbore tools provide single-pass cleanups that focus on drilling mud residue removal, wellbore debris elimination, formation damage minimization and NPT reduction.

In addition to specialized tools, we offer an integrated suite of sophisticated planning software and effective displacement fluids that assure a clean, debris-free well during the critical transition of well construction from the drilling to completion phases.

www.miswaco.com/completions



PRODUCTIONEER

**USED BY EVERYONE,
FROM THE FIELD PUMPER
ALL THE WAY UP TO MANAGEMENT**

What our customers are saying:
"Productioneer is a great data repository and analysis tool. Data entered in the field is immediately available to corporate office."

FEATURES

- FIELD DATA CAPTURE
- ALLOCATIONS
- REPORTS & GRAPHS
- CUSTOMIZABLE TEMPLATES
- FULLY MANAGED SERVICE

Mi4 Corporation
Ph: (713) 401-9584
sales@productioneer.com
www.productioneer.com

24/7 SUPPORT HOTLINE (866) 421-6665

The SimpleStart™ toe sleeve

Simply pressure up and test the casing; the toe sleeve opens automatically for initial injection.

ncsfrac.com

Leave nothing behind.

© 2013 NCS Energy Services LLC. Multistage Unlimited, SimpleStart, and "Leave nothing behind" are trademarks of NCS Energy Services LLC.

Providing Engineered Solutions

281.955.2900
www.stress.com

STRESS ENGINEERING SERVICES INC.
DESIGN • ANALYSIS • TESTING

Maersk Oil: A Global Oil and Gas Company

The International Study Group is honored to host Bruce Laws, who will be presenting on Maersk Oil's recent international exploration and production investments. Maersk Oil is part of the A.P. Moller-Maersk group of companies, headquartered in Copenhagen, Denmark. Turning marginal and challenging fields into commercial successes has been the cornerstone of Maersk Oil's business since 1962. Maersk Oil focuses on pioneering technologies and harnessing talent to operate safely and successfully. Core interests include shallow water exploration and production in the North Sea and Qatar, deepwater operations in Angola, Brazil and the US, and onshore activities in Kazakhstan, Kurdistan and Algeria. Entitlement production is envisioned to increase from about 250,000 bopd to about 400,000 bopd, driven by a portfolio of major capital projects.

Bruce Laws

Bruce Laws joined Maersk Oil in 2008 as the President of the Houston office. A member of the Maersk Oil Executive Team in Copenhagen, he is responsible for activities in the U.S., Brazil and the Chissonga deepwater development project offshore Angola. Prior to joining Maersk Oil he worked exclusively in the international arena with Chevron followed by Murphy Oil, including overseas assignments in Papua New Guinea, Nigeria and Angola. While with Chevron, he held positions of increasing responsibility in the development exploration and new ventures functions. As Vice-President for Latin America, Africa and Europe Operations for Murphy, his responsibilities included the world's first FDPSO, which developed the Azuite field, offshore The Republic of Congo. Bruce earned a Bachelor's Degree in Geology and a Master's Degree in Geophysics from the University of California, Santa Barbara.



Event Info

SPEAKER

Bruce Laws
Vice President, Maersk Oil and
President, Maersk Oil Houston
Maersk Oil

LOCATION

Petroleum Club
800 Bell Street, 43rd floor
Houston, TX 77002

EVENT CONTACT

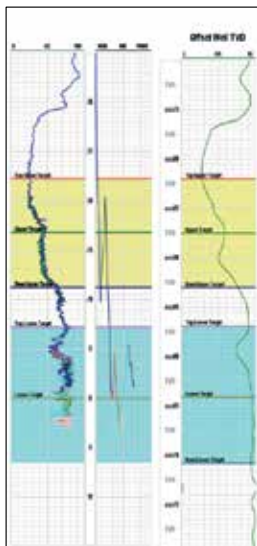
Mark Sokolow
281-286-9749
mtsokolow@yahoo.com

MEMBERS

\$35 in advance, \$40 at door

NON-MEMBERS

\$40



Geosteering Services

Highly qualified personnel with 20+ years DD & LWD experience

24/7 Real-time monitoring or reports from LAS files

Proprietary software

Geosteering Software

TST interpretation for GR only measurements

Image displays / interpretation of azimuthal GR, resistivity or density measurements

Resistivity modelling / interpretation for LWD propagation resistivity

Software sales, training and technical support

info@geosteering.com

Call 281 573 0500

Multiphase Pump User Roundtable



May 8th | Houston, TX

2014 MPUR will feature HOT TOPICS:

- Seafloor Operational Experience
- ESP Performance & Technology
- Frac'ed Well-Pad Applications
- Wet-Gas Compressor Technology

Register today: *Become part of the future!*

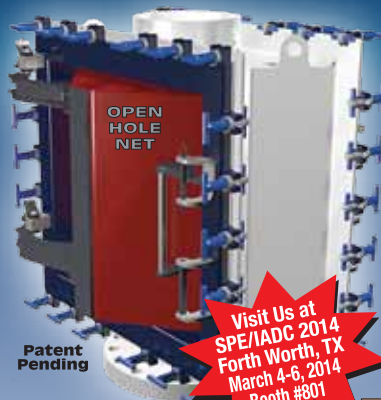
www.MPUR.org

You drop it in the wellbore, we catch it!

Introducing ...

OPEN HOLE NET™

Protects the wellbore from metal dropped into and coming out of the wellbore!



Patent Pending

- **Installs over any API standard size annular preventer.**
- **Roughnecks rig it up; no operator needed.**
- **No power source needed.**
- **Operates 24/7/365. Never rests.**
- **Complete stainless steel construction.**
- **M.A.D.E.™ (Made, Assembled, Designed, Engineered) in USA.**

Visit Us at SPE/IADC 2014 Forth Worth, TX March 4-6, 2014 Booth #801



Premier Magnetic Applications in Drilling Completion and Production Operations
sales@5doilfieldmagnetics.com • 337.466.7400



www.5doilfieldmagnetics.com



Reach for the SUMMIT in ESP solutions

EASTERN AREA 918.392.7820
SOUTHERN AREA 432.563.7040
WESTERN AREA 307.764.6346

www.summitesp.com



The Independent Leader in Real-Time Solutions

Solutions for Drilling, Petrophysics, and Geological Analysis

- Real-Time & Unstructured Data Management Services
- Drilling & Data Management Consulting
- Active Drilling Surveillance



www.petrolink.com

What Have We Learned About Fracturing Shales After 12 Years of Microseismic Mapping?

Effective hydraulic fracture stimulation is critical for shale development, and microseismic is the only technology able to map the growth of these hydraulic fracture networks. Since the advent of commercial mapping in the Barnett Shale in 2000, microseismic has been used to investigate hydraulic fracture treatments around the globe. Microseismic can be used to tune the stimulation to cover just the intended reservoir depth interval without fracturing out of zone, understand the primary fracture orientation to optimize the well orientation, define the optimum spacing between stages and detect unexpected fracture growth such as fault activation. More fundamentally, however, microseismic images of complex fracture networks have fundamentally changed the conceptual view of hydraulic fractures from simple, planar fractures to intersecting fracture networks in various directions. The recent development of complex fracture models, which implicitly simulate both the geomechanics and mass balance of the injected fluid volume, offer promise to estimate the effective propped volume of the fracture network. These geomechanical simulations also provide insight into not only where the rock is fracturing, but also allow interpretation of microseismic source deformation and mechanism attributes, which provide further insight into how the fractures deform.

Shawn Maxwell

Shawn Maxwell is Chief Geophysicist and Advisor for Schlumberger's microseismic services, and is based in Calgary, Alberta. Previously he introduced commercial microseismic hydraulic fracturing imaging services to the oil and gas industry and was a Lecturer at Keele University in England. He was awarded a Ph.D. in microseismicity from Queen's University. He has authored over 80 publications in journals and professional abstracts, acts as the passive seismic associate editor for Geophysics, is the Education Director for the CSEG, has lead numerous microseismic industry technical short courses, and chaired various industry workshops for the SPE, SEG and EAGE. He is also appointed the 2014 SEG Distinguished Instructor Short Course.



Event Info

SPEAKER

Shawn Maxwell
Chief Geophysicist and Advisor
Schlumberger

LOCATION

Greenspoint Club
16925 Northchase Dr.
Houston, Texas 77060

EVENT CONTACT

Matthew Strom
281-618-7848
Matthew_Strom@swn.com

MEMBERS


\$35

NON-MEMBERS

\$40

PetroSkills®

February and March sessions in Houston



Introductory & Multi-Discipline

- Basic Drilling, Completion & Workover Operations, 2-6 June
- Evaluating and Developing Shale Resources, 5-13 June
- Exploration & Production Process Basics, 16-27 June
- Overview of the Petroleum Industry, 10-11 June

Production & Completions

- Acidizing Applications in Sandstone and Carbonates, 15-23 May
- Beam Pumps, 12-16 May
- Completions and Workovers, 23-27 June
- Formation Damage: Causes, Prevention, and Remediation, 15-23 May (in conjunction)
- Gas Well Dehydration, 16-20 June
- Performance Analysis, Prediction, and Optimization Using NODAL™ Analysis - PD2, 2-6 June
- Production Operations I - PO1, 2-13 June
- Progressing Cavity Pumps, 23-27 June
- Surface Production Operations, 15-23 May
- Unconventional Resources Completion and Stimulation, 19-23 May

Reservoir Engineering

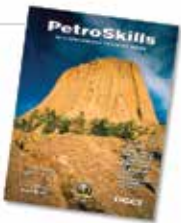
- Applied Reservoir Engineering - RE, 9-20 June
- Basic Reservoir Engineering, 5-9 May, 7-11 July
- Decline Curve Analysis and Diagnostic Methods for Performance Forecasting, 19-20 May
- Enhanced Oil Recovery with Gas Injection, 21-25 July
- Reservoir Simulation Strategies, 2-6 June

Well Construction/Drilling

- Basic Drilling Technology, 15-23 May, 21-25 July
- Drill String Design and Optimization, 14-16 July
- Drilling Fluids Technology, 16-20 June
- Solids Control Systems, 5-13 June
- Stuck Pipe Prevention - Train Wreck Avoidance™ - SPP, 23-25 June
- Well Design and Engineering, 2-13 June

For details on these or our other 250 sessions in the Gulf Coast, contact Patty Davis, (832) 426-1203 or patty.davis@petroskills.com, or see details and full selection at www.petroskills.com

Did you get your copy of our 2014 Training Guide? If not, sign up for free at www.petroskills.com/contact




Trying to make sense of the U.S. Water Market?

Water Market Opportunities Report

- Play-by-play market sizes
- Regulatory trends
- Analysis on major players
- Insight into business models

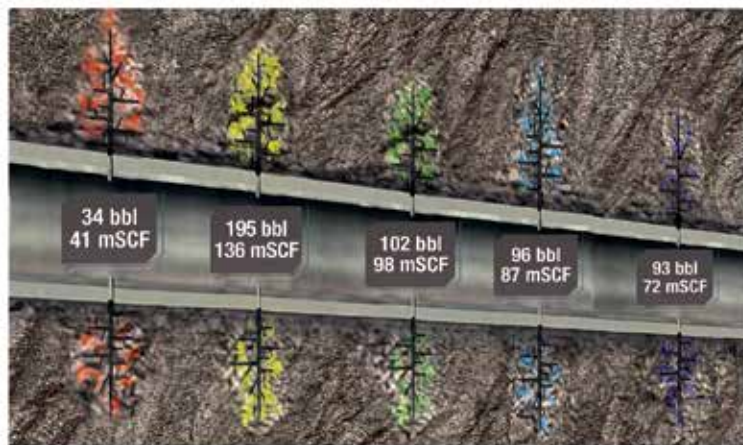
- water acquisition
- water transfer
- water storage
- water treatment
- water hauling
- water disposal




Maria Bertram, IHS
 1-781-301-9438
maria.bertram@ihs.com

Measure Hydrocarbon Stage Production

...No tools, coiled tubing or wireline





To learn more call or email:
 Tel: 281 291 7769
 Email: reservoir@tracercoco.com
www.tracercoco.com/reservoir-characterisation

Tracer technology to evaluate stimulation and well design:

- ◆ Measure actual oil and gas production per stage
- ◆ Results equivalent to 30+ days of production logging
- ◆ Diagnose fracture communications to offset wellbores
- ◆ Confirm toe flow to verify release of all plugs

Knowing what's going on at the bottom keeps you on top.

TUE
April 15

11:30 AM TO 1:00 PM

The Petroleum Future

Dr. Ehlig-Economides will be presenting an overview and forecast of the oil and gas industry. This talk will engage the audience to explore together the implications of energy needs and consumption on everyday life and on potential career opportunities in the petroleum industry.

Dr. Christine A. Ehlig-Economides

Dr. Ehlig-Economides has been full professor of petroleum engineering at Texas A&M University in the Albert B. Stevens endowed chair since 2004. Before that she worked for Schlumberger for 20 years in well test design and interpretation, integrated reservoir characterization, modern well construction design, and well stimulation. She has worked in more than 30 countries and authored more than 60 papers. Dr. Ehlig-Economides has received a number of technical awards including the SPE Formation Evaluation, Lester C. Uren Awards and the Anthony Lucas Gold Medal, and she was inducted into the National Academy of Engineering in 2003. She is currently a member of the National Academy Board on Energy and Environmental Systems (BEES). She is developing courses and academic programs in Energy Engineering at Texas A&M University.



Event Info

SPEAKER

*Dr. Christine A. Ehlig-Economides
Professor of Petroleum Engineering
Texas A&M*

LOCATION

*Norris Center Westchase
9990 Richmond Ave., #102
Houston, TX 77042*

EVENT CONTACT

*Amy Timmons
713-836-6563
Amy.Timmons@Weatherford.com*

MEMBERS

\$35

NON-MEMBERS

\$40

WALK-INS

Additional \$5

SEE THE ENERGY WITH TGS' DATA INTEGRATION SOLUTION

See and access all of your G&G data with Volant, TGS' geoscience data and application integration solution.

For more information contact TGS at:
Tel: +1 713 860 2100
Email: info@tgs.com



WWW.TGS.COM

© 2013 TGS-NOPEC GEOPHYSICAL COMPANY ASA. ALL RIGHTS RESERVED.

TGS See the energy.



Engineering consulting and training services to maximize the value of your investment in flow assurance

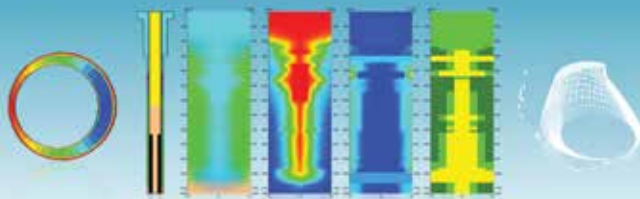
SPT Group has one of the world's leading dedicated flow assurance consulting teams working with multiphase flow technology in wells and pipelines.

Every day we work with the world's leading energy corporations and oil and gas service companies to locally deliver specialist consulting and training services through our global offices and training facilities.

To learn more about the value we offer please visit www.sptgroup.com

SPT GROUP
A Schlumberger Company

CEMPRO⁺ Mud Displacement Software



Pegasus Vertex, Inc.

713-981-5558 | sales@pvisoftware.com | www.pvisoftware.com



www.hydrawell.com

Email us at info@hydrawell.com

DIRECTIONAL
AND
HORIZONTAL
DRILLING
SPECIALISTS



WWW.NOVADIRECTIONAL.COM



ULTERRA™

When Every Run Counts™



www.ulterra.com

+1 817 293 7555

GIS Tips and Tricks for Data QC and Analysis

SQL, Python and VBScript have many functions that are not exposed through the standard Attribute Query and Calculator dialogs in ArcGIS Desktop, but nevertheless can be used. These functions, along with some other Desktop tools, are great resources for data QC and Analysis in ArcGIS. This seminar will discuss a few of the Data QC and Analysis tips and tricks.

Jennifer Harrison

Jennifer Harrison has a BA in Mathematics and an MS in Geosciences from Murray State University in Murray, Kentucky. She has been consulting in the GIS field since 1992 and has been teaching Esri software (ArcGIS, Workstation ARC/INFO, AML® and ArcView) since 1997. Harrison has been named one of ESRI's top 5 instructors in the US for several quarters. She is the owner of Inner Corridor Technologies, better known by their website name – TeachMeGIS, one of the largest GIS Training companies in the nation. TeachMeGIS helps many Fortune 500 companies across the US and internationally incorporate geospatial technologies into their workflows.

Event Info

SPEAKER

Jennifer Harrison
President
Teach Me GIS

LOCATION

Sheraton Houston
Brookhollow Hotel
3000 North Loop W
Houston, TX 77092

EVENT CONTACT

Lilly Lee
832-714-5615
lilly.lee@nexenusa.net

MEMBERS

\$38

NON-MEMBERS

\$38

Lifting the Veil from Unconventional Production

The Project, Facilities and Construction Study Group is pleased to announce our Spring Lecture Series for 2014. These events shall focus on “Lifting the Veil from Unconventional Production”.

Unconventional production has changed the U.S. oil and gas industry, moving the focus and more importantly CAPEX spend from deepwater offshore and international to domestic onshore. The reason for this shift of focus is of course economics and geologic success rate. Unconventional resources tend to be measured in billions of barrels and trillions of cubic feet in place, an order of magnitude higher than typical conventional resources with enormous areal extent. Whether tight rock, immobile fluids or captured in source rock, the sheer quantity of the resource provides a strong interest to make development feasible.

This series is intended to ‘Lift the Veil’ on the differences, and highlight the similarities, between conventional and unconventional production and field development techniques. These 1-hour lectures will be technical, provide valuable lessons learned, and are followed by 30 minutes of questions and discussion in order to promote understanding of the presented principles.

We fully expect a large turnout so please book early and we hope you make all attempts to attend all four lectures. The PF&C Study group appreciates the support of our SPE GCS members and we look forward to seeing you there.

Abstract

The first presentation in this series on April 23 comes from George King of Apache. This presentation will provide a good overview of a prospect development. The work process, stakeholders as well as regulatory and permitting challenges will be presented along with an overview of the equipment to provide some insight to the Drilling, Completions, Production and Custody Transfer kit required to undertake a development.

In the second installment in the series on April 30, Ellen Coopersmith will offer insight into Decision Analysis and Scenario Thinking as it applies to Asset Strategy. The goal is to achieve “front-end loading” of a company’s existing decision processes to focus the asset team early, speed the analysis, and most importantly, bring greater clarity and value to each decision. Ellen is the founder of Decision Frameworks and a Petroleum Engineer with a degree from the Colorado School of Mines. Prior to founding Decision Frameworks in 1999, Ellen spent 16 years at Conoco, where she led their implementation of Decision Analysis in Upstream for five years.

Please be sure and check back in the May issue of Connect for the abstracts describing the continuation of our Spring Series; Series III – Unconventional Production Process Configuration and Series IV – Broaching Water Management Challenges and Handling Issues.

April - May

4:30 PM - 6:30 PM

Spring Lecture Series

DATES

Series I: April 23

Series II: April 30

Series III: May 14

Series IV: May 21

LOCATION

WorleyParsons (Energy Center II)

575 North Dairy Ashford

Houston TX 77079-1103

Ground Floor Conference Room

EVENT CONTACT

Brad Nelson

832-230-8246

bnelson@maxoilsolutions.com

MEMBERS

\$35 per lecture

NON-MEMBERS

\$45 per lecture

STUDENT

\$15 per lecture

Developing an Artificial Heart with Assistance

The R&D Study Group will be hosting John Bartos, Vice President, Development and Technology for Cameron. In November 2010 the Texas Heart Institute contacted Cameron to ask if they would participate from an engineering standpoint in the design and development of the next generation total artificial heart. The doctors contacted Cameron based on the fact that they have significant expertise in the design of all kinds of pumps and compressors, plus the fact that Cameron will be around to support it. Cameron agreed to take this on and put together the engineering team that exists today. The engineers work on this project on a voluntary basis.

John Bartos

John Bartos serves as the executive sponsor for the Cameron Artificial Heart team. He was named corporate Vice President, Development and Technology for Cameron in May 2007. He is responsible for identifying and implementing new technology that supports Cameron's engineering processes and product development initiatives.

Bartos previously served as Vice President, Engineering and Product Development for Cameron's Compression Systems division beginning in 2003. He joined Cameron in 2000 as Vice President, Engineering for Compression Systems' centrifugal compressor business and also held leadership roles in the division's Lean Six Sigma program, as well as in reciprocating engineering, information technology and technical training functions. Before joining Cameron, Bartos held similar positions with Ingersoll-Rand and with A-C Compressor. He has a Bachelor of Engineering degree in Mechanical Engineering from Stevens Institute of Technology in Hoboken, NJ.

Event Info

SPEAKER

*John Bartos
Corporate Vice President
Development and Technology
for Cameron*

LOCATION

*Norris Conference Center –
Westchase
9990 Richmond Ave., South Bldg.,
Ste. 102
Houston, Texas 77042*

EVENT CONTACT

*Skip Davis
281-359-8556
skdavis@technologyintermediaries.com*

MEMBERS

\$35

NON-MEMBERS

\$40

THU
April 24

11:30 AM TO 1:00 PM

Integrated Reservoir Approach to Unconventional Development

The use of horizontal drilling and hydraulic fracturing has been credited for much of the success that has been achieved in ultra-low permeability shale reservoirs, making it possible to produce natural gas, natural gas liquids and crude oil at economic rates. Even though thousands of wells have been drilled and completed using these techniques, there are relatively few modeling tools available to the industry that are designed specifically for these applications, which leaves much of the optimization process up to trial and error techniques that are costly and time consuming.

This presentation will cover a recent case history where new software tools and workflows were used to more effectively design and predict well performance, including the use of shale reservoir characterization, hydraulic fracture simulation, and reservoir simulation tools designed specifically for these complex well geometries and difficult reservoir conditions. The workflow is focused on designing stimulation treatments that maximize the stimulated volume of the reservoir around the wellbore and also maximizes the connected fracture area within this volume. This combination can result in increased production rates while also increasing the possible ultimate recovery that can be achieved from a given wellbore. This presentation provides information on these new tools, the workflows generated for these new tools and the results of an early application that has yielded impressive results, even when applied in an established shale field within the USA.

Ron Dusterhoft

Ron Dusterhoft is a Halliburton Technology Fellow for Production Enhancement with 30 years of industry experience. Dusterhoft's specific areas of thought leadership include hydraulic fracturing, FracPac completions, sand control screens, sand consolidation, sand control down hole tool systems and reservoir simulation for shale.

Dusterhoft is currently focused on drilling and completion optimization and stimulation design for unconventional shale assets. This involves the use of full asset workflows and more effective data management to maximize collaboration and knowledge sharing between Geoscience, Drilling and Completion Engineering. This also includes defining user stories and applications for a new generation of stimulation design models and reservoir simulation tools designed for unconventional assets. He has over 30 technical publications and has issued 54 US patents. He received his BSc in Mechanical Engineering from the University of Alberta, Canada. He is an active member in the SPE and served as an Editor and Peer Reviewer for the SPE Drilling and Completions Journal for the past 10 years.

Event Info

SPEAKER

Ronald (Ron) Dusterhoft
Technology Fellow
Halliburton

LOCATION

Sullivan's Steakhouse
4608 Westheimer Rd
Houston, TX 77027

EVENT CONTACT

Miles Palke
713-750-5490
miles_palke@ryderscott.com

MEMBERS

\$35 in advance, \$45 at door

NON-MEMBERS

\$40 in advance, \$45 at door

Examination of Fracturing Completion Reliability Based on Intra-Well Pressure Interference

Because of its great financial and operational impact, the fracturing community has always been very interested in the assessment of the reliability and performance of the downhole tools. This is particularly critical for multi-stage fracturing of horizontal wells. By necessity, the background technical data for the performance of these tools usually come from backyard and laboratory tests which are conducted under ideal conditions and often do not reflect the real world.

This presentation has two main parts: demonstrating how downhole pressure data in multi-stage fracturing treatments can be used for tool reliability assessment, and presenting the results of a study performed on actual hydraulic fractures conducted in multiple cemented and openhole liner completions. The presentation focuses specifically on the performance of downhole isolation tools (openhole packers and liner plugs). It shows the consequences of the absence of isolation on the created hydraulic fractures.

Ali Daneshy

Ali Daneshy is President of Daneshy Consultants International and adjunct professor in The Cullen College of Engineering at The University of Houston, where he teaches a graduate course in hydraulic fracturing. He has over 40 years of experience in the technology and application of hydraulic fracturing and has published numerous papers on the subject. At present, his main focus is on consulting and teaching short courses related to horizontal well fracturing.

Event Info

SPEAKER

Ali Daneshy
President
Daneshy Consultants International

LOCATION

Norris Center – Westchase
9990 Richmond Ave., Ste. 102
Houston, TX 77042

EVENT CONTACT

Andrea Hersey
281-646-2805
andrea.hersey@momentive.com

MEMBERS

\$40

NON-MEMBERS

\$45

Directionally challenged?

If your directional drilling program is more challenging than you expected, maybe you need a new directional driller. Maybe you need Ryan Directional Services, Inc.

Ryan has experience in virtually every important oil and gas shale play. We know the potential roadblocks and how to address them before they cost you money. And that takes drilling to a new level of efficiency.

Call Ryan at 281.443.1414 and see how our directional drilling program will change your experience from challenging to rewarding.

www.nabors.com



Water/Wastewater short course: Issues, Challenges, Solutions, New Technologies



April 15-16, 2014

Texas A&M University
College Station, Texas

Course includes equipment demonstration, filtration trailer showcase, and analytical trailer showcase

Webinar Option Available

Online registration: www.gpri.org
Contact: **Carl Vavra**, 979.862.1617



**GLOBAL PETROLEUM
RESEARCH INSTITUTE**
TEXAS A&M ENGINEERING EXPERIMENT STATION

ARE YOU FEELING THE EFFECTS OF THE **Great Crew Change?**

Replenish
your company men
with competent
personnel...



Signa's Wellsite Foreman Intern Training (WFIT) program does all the groundwork to provide operators with qualified company men. We screen, select and train optimal candidates, evaluating each of them throughout to ensure they're tailor-made for your company.

- Drilling or Completion
- Establish core skillsets
- Instill good habits
- Get quicker results
- Monitor progress



The WFIT program is a comprehensive 8-mo. training class utilized by large and small operators (As featured in *Offshore* magazine).

Signa Engineering Corp.
Houston, TX USA
www.signaengineering.com

Contact: Dave Roseland
281.774.1026
droseland@signa.net

PATENTED **proNova**TM by TDE

DRILLING PERFORMANCE

CREW PERFORMANCE MEASUREMENTS

AUTOMATIC OPERATIONS DETECTION

INVISIBLE LOST TIME DETECTION

281.755.7595
www.pronova-tde.com

FINANCIAL INVESTMENT SEMINAR AND NETWORKING SOCIAL

THU
April 10

5:30 PM-7:30 PM

2014 Outlook, What to Know, What to Do

- Current Economic Outlook
- Strategies to address the impact of inflation and interest rates
- Opportunities both domestic and abroad

SPEAKERS

<i>Tony Leal</i>	<i>Will Cottle</i>
<i>Vice President</i>	<i>Financial Advisor</i>
<i>Blackrock Investments</i>	<i>Edward Jones</i>

Event Info

LOCATION

*Blackfinn Bar and Grill
1910 Bagby Street
Houston, TX*

EVENT CONTACT

*Brittany Niles
281-782-8194
Brittany.niles@shell.com*

YP SPRING NETWORKING SOCIAL

THU
April 17

5:30 PM-7:30 PM

Please join SPE-GCS Young Professionals for a networking night at Proof Bar and Patio! The event begins at 5:30pm and food is provided. Come enjoy the beautiful spring weather at Proof's rooftop bar and socialize with other YPs.

Event Info

LOCATION

*Proof Bar and Patio
2600 Travis
Houston, TX 77006*

EVENT CONTACT

*Brittany Niles
281-782-8194
Brittany.niles@shell.com*



Are you looking to get involved with the SPE-GCS Young Professionals Board?

Come out to our monthly Board Meetings, Networking Events, Luncheons, and Community Service Events to get to know us better! Applications for the 2014-2015 Board will be released in late April.

QUESTIONS

*Pavitra Timbalia
Pavitra.a.timbalia@exxonmobil.com*

COMMITTEE AUXILIARY

DATE

*Friday, April 11, 2014
11:00 AM
Deadline: Tuesday, April 8*

LOCATION

*Phillipe's
1800 Post Oak Blvd,
Ste 6110,
Houston, TX
713-439-1000*

EVENT CONTACT

*Nancy Hill
(281) 435-1619
nancyhill2444@sbcglobal.net*

Measured Solutions from
The Completion Diagnostics Company

Annular Pack Quality?

With ProTechnics' memory gamma density imaging services you can directly measure:

- Annular Pack Quality
- Top of Annular Pack
- Production Allocation
- Long-Interval Pack Coverage
- Stage Production Contribution
- Horizontal Gravel-Pack Quality

PACKSCAN

ProTechnics
COMPLETION DIAGNOSTICS
a division of Core Laboratories

Learn more at www.corelab.com/protechnics or call us at 713-328-2320

Oil & Gas Charity Golf Tournament

Benefiting **houston foodbank**

May 12th, 2014
Augusta Pines Golf Club

Hosted by Pegasus Vertex, Inc.

Excellent Sponsorship Opportunities Available

Registration Fee:
Before April 15th: \$400/foursome, \$100/individual
After April 15th: \$500/foursome, \$125/individual

For more information, please visit www.pvisoftware.com or contact Jerry Murphy at (713) 981-5558/golf@pvisoftware.com

Technical Documentation Development and Management Consulting

Documentation help = more available engineering time

- Quick turnaround
- On-demand resource
- Turnkey publication

Technical Writing

- + Develop content
- + Multiple authors – consistent voice
- + Formatting, grammar & readability
- + Develop / edit graphics

Management Consulting

- + Documentation & project management
- + Procedures, processes & workflow
- + RFPs, RFQs & contract management

ZAETRIC®
www.zaetric.com

Integrated Energy Services, Inc.

Robert Barba
Petrophysicist

Log Analysis
Completion Optimization

500 N. Capital of TX Hwy
Building 4-150
Austin, TX 78746
C: (713) 823-8602
F: (713) 583-9400
RBarba75@gmail.com

www.integrated-energy-services.com

2013 PROFESSIONAL ENGINEERING EXAM RESULTS FOR PETROLEUM ENGINEERING

First Timers 75%
Second+ Timers 53%
National Pass Rate 70% Est

Look next month for Winrock PE Course Results

PE Exam Application Deadline Date: July 1, 2014
Next Petroleum PE Exam Date: October 24, 2014

P: 405-822-6761 | E: bingwines@cox.net
winrockengineeringinc.com

ppitech.net (713) 464-2200

PPI Engineering & Construction Services

Right of Way • Pipelines • Foundations
Engineering • Design

VIKING ENGINEERING, L.C.

CRITICAL WELL ENGINEERING CONSULTING SERVICES

VIKING'S TEAM OF HIGHLY TRAINED PETROLEUM PROFESSIONALS LEND THEIR EXPERIENCE TO CREATIVE WELL DESIGNS.

WE CAN HELP PLAN AND EXECUTE YOUR TOUGH WELLS.

- PETROLEUM CONSULTING
- HPHT WELL DESIGN
- APB ANALYSIS
- PROJECT MANAGEMENT
- FAILURE ANALYSIS
- TRAINING

VISIT OUR WEBSITE: WWW.VIKINGENG.NET
OR CALL: (281) 870-8455 IN HOUSTON

WED
April 30

11:30 AM TO 2:30 PM

TECHNOLOGY, CULTURE, AND CHANGE – EXPLORING CHANGE IN THE OIL AND GAS MARKET

Please join the Technology Transfer Committee from Society of Petroleum Engineers Gulf Coast Section for a special luncheon previewing how technology can impact the organization and create disruption leading to the need for cultural and organizational change.

Along with the increase of system complexity, safety mandates and workforce changes are driving a new imperative - change or be outperformed. There are several questions we can ask when considering change and its far-reaching outcomes. What is change? What is required to embrace change? How does change depend on mindset? Does culture impact one's ability to embrace change? "Change has a considerable psychological impact on the human mind. To the fearful it is threatening because it means that things may get worse. To the hopeful it is encouraging because things may get better. To the confident it is inspiring because the challenge exists to make things better." (King Whitney Jr.) Join this luncheon to hear Patrick Johnson of Baker Hughes explore his experiences with cultural change from several different perspectives from oil & gas to other vertical markets.

PATRICK JOHNSON

Patrick Johnson is the Manager for D&E System Software Testing for Baker Hughes. With over 15 years of experience in the software industry, Johnson has served in multiple roles ranging from strategy, planning, execution and implementation, development and more. He is an Electrical Engineer with extensive skills and experience in Quality, Testing, and the Software Development Lifecycle. He has experience with top oil and gas organizations, as well as other vertical markets and is a certified Trainer, Consultant and Software Test Engineer.

Event Info

SPEAKER

*Patrick Johnson
Manager, D&E System
Software Testing
Baker Hughes*

LOCATION

*Norris Westchase Center
9990 Richmond Ave.,
Suite 102
Houston, TX 77042*

EVENT CONTACT

*Carol Piovesan
cpiovesan@apoooffshore.com*

COST

Free

SPE-GCS AWARDS & SCHOLARSHIP BANQUET

TUE
May 27

Join us for a wonderful evening as we celebrate the achievements and support of SPE-GCS members. The annual SPE-GCS Awards Banquet recognizes the high school seniors and college students who have received an SPE-GCS scholarship for the 2014 academic year. In addition, this event also recognizes our Legion of Honor award recipients as well as our SPE Sectional and Regional award winners.

LOCATION

*Rice Hotel, Crystal Ballroom
909 Texas Avenue
Houston, TX 77002*

CONTACT

*James Rodgerson
713-323-1517
james.rodgerson@bp.com*

TIME

6:00 -10:00 PM

MEMBERS

\$55

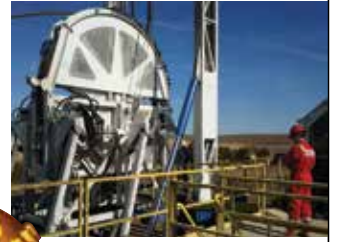


WWW.CoiledTubingDrilling.com

New Directional Coiled Tubing Drilling Capability. At your service.

We can help you recover more production from existing wells with underbalanced, directional and horizontal drilling.

Contact us to discuss how Coiled Tubing Drilling can be used to your advantage.



AnTech®



We can work with your existing coil provider.

sales@coiledtubingdrilling.com

713-703-0608

10030 Fairbanks North, Houston, Texas 77064

www.intertek.com



Upstream Services

6700 Portwest Drive | Houston, TX 77024

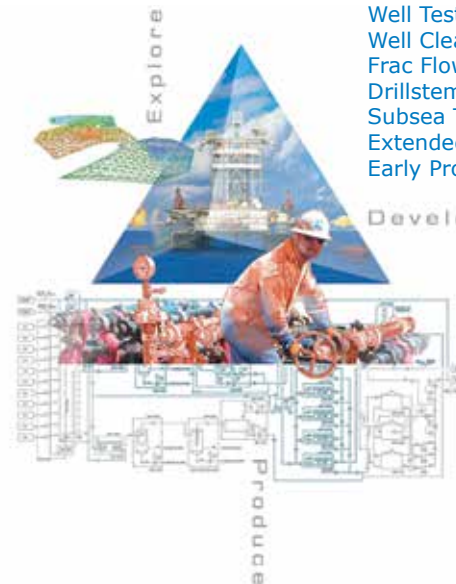
713.479.8400

westportservices@intertek.com

Delivering Testing Results in Every Phase

Production Testing Services

- Well Testing
- Well Cleanup
- Frac Flow Back
- Drillstem Testing
- Subsea Test Trees
- Extended Well Tests
- Early Production Facilities



© TETRA and the TETRA logo are registered trademarks of TETRA Technologies, Inc. All rights reserved.

tetrathec.com

WED
April 9

11:30 AM TO 12:30 PM

ETHICS SEMINAR: TEXAS BOARD OF PROFESSIONAL ENGINEERS: LICENSING PROCESS/ETHICS

This seminar covers the licensing requirements and applications process as well as rule and legislative changes that affect the profession, and board issues/actions.

The Society of Petroleum Engineers Gulf Coast Section will present a continuing education seminar which will discuss ethics. This 1-hour seminar will qualify attendees for their annual ethics training requirement by the Texas Board of Professional Engineers.

CHARLES PENNINGTON

The Board employed Mr. Pennington on February 19, 2002 as an Engineering Specialist. In his role, he provides engineering expertise to the Board investigators as well as participates in outreach programs to educate the public and licensed engineers on engineering matters pertaining to the Engineering Practice Act. Mr. Pennington is also engaged in the research and development of policy advisories for the Board.

Prior to his six-year career with the State of Texas, Mr. Pennington was a mechanical engineer with Applied Materials for ten years. Mr. Pennington has 25 years of mechanical engineering experience in the semi-conductor, robotic and construction industries.

OIL PATCH ORIENTATION

This seminar is one of the most popular SPE programs. The course is designed as a non-technical audio-visual guided tour through the oil patch, illustrating the basic equipment and techniques used in the discovery, development and production of petroleum.

The event will begin with an introduction and an outline of the day. The following topics will be discussed: the economics & future of the petroleum industry, theory of the origins of hydrocarbons, reservoir parameters, geology of petroleum & geophysics, drilling basics, well logging, well completions, reservoir drive mechanisms, production equipment and midstream & downstream topics.

SPEAKERS

John Farina Ken Arnold
Ron Hinn Marty Stetzer
Susan Howes

Event Info

SPEAKER

Charles Pennington, P.E.
Engineering Specialist

LOCATION

SPE Houston Training Center
10777 Westheimer, Suite 1075
Houston, Texas 77042

EVENT CONTACT

Patty Davis
patty.davis@petroskills.com

COST

Members/Non-Members
\$40

THU
April 17

8:30 AM TO 5:30 PM

LOCATION

Hilton Houston North
12400 Greenspoint Dr.
Houston, TX 77060

CONTACT

Regina Eco
713-308-0329
petrolera@gmail.com

PRICE

\$350

COMMITTEE SPORTING CLAYS

FRIDAY

June 6

14th Annual Sporting Clays Tournament

Registration

Time Preference AM PM

Team Captain _____ City/State/Zip _____

Company _____ E-Mail _____

Address _____ Phone _____

SPE Member Name /Number _____

Shooter No 2 _____ Shooter No 4 _____

Company _____ Company _____

E-Mail _____ E-Mail _____

Phone _____ Phone _____

Shooter No 3 _____

Company _____

E-Mail _____

Phone _____

METHOD OF PAYMENT

Payment: Check Visa MC AMEX DISC

Card Number _____ Expiration Date _____

Name as it appears on card _____

Signature _____

Email _____

Total to Charge Card _____

(Make checks payable to SPE-GCS)

COST

\$850 per 4-person team
Includes a 100-round course

LOCATION

Westside Sporting Ground
10120 Pattison Rd.
Katy, Texas 77493
www.wsg-clay.com

REGISTRATION

Yim Szeto
832-816-8966
361-798-3862 Fax
Yimlun@gmail.com

REGISTRATION INFO

Limited to first 700 shooters

At least one shooter must be
a current SPE member

Shooters provide own ammo
(No. 7 ½, 8, 9 shot ONLY)

Starting time and station sent
to team captain only

Sponsors will receive first
consideration

Station will be double caged

EMAIL/MAIL ENTRY FORM WITH PAYMENTS TO:

Yim Szeto
257 County Road 125
Hallettsville, Tx 77964

Tournament Sponsorship

SPONSORSHIP COMMITTEE CHAIRPERSON

Greg Rachal

MI-Swaco a Schlumberger Company

713-628-3341

grachal2@slb.com

- Diamond Sponsor** **\$7,500**
As a diamond sponsor, your company will be recognized as a Corporate Sponsor of the tournament and the company name will appear on the sponsor board. Your sponsorship entitles you to four (4) complimentary teams in the tournament and V.I.P. parking.
- Platinum Sponsor** **\$5,000**
As a platinum sponsor, your company name will appear on the sponsor board. Your sponsorship entitles you to two (2) complimentary teams in the tournament and V.I.P. Parking.
- Gold Sponsor** **\$3,500**
As a gold sponsor, your company name will appear on the sponsor board. Your sponsorship entitles you to one (1) complimentary team in the tournament and V.I.P. parking.
- Silver Sponsor** **\$2,000**
As a silver sponsor, your company name will appear on the sponsor board. Your sponsorship entitles you to V.I.P. parking.
- Bronze Sponsor** **\$1,500**
As a bronze sponsor, your company name will be on the sponsor board. Your sponsorship entitles you to V.I.P. parking.
- Entry Gift Sponsor (limited to 3)** **\$5,000**
As an entry gift sponsor, your company name will be on the sponsor board and on entry gifts (to be determined by committee) handed out to each shooter.
- Shuttle Cart Sponsor (limited to 3)** **\$2,000**
As a shuttle cart sponsor, your company name will appear on the sponsor board and on the shuttle carts used at the tournament.
- Shotgun Sponsor** **\$1,200**
As a shotgun sponsor, your company name will appear on the sponsor board. Your sponsorship entitles you to personally present the shotgun on stage at the tournament to the winner.
- Shooter # Sponsor** **\$1,000**
As a Shooter # Sponsor, your company name will appear on each competitor # that all participants will display.
- Scorecard Sponsor** **\$1,000**
As a scorecard sponsor, your company name will be on the sponsor board, competitor #, and on each scorecard.
- Corporate Sponsor** **\$500**
As a corporate sponsor, your company name will be on the sponsor board.
- Hospitality Sponsor (limited to 5)** **\$300**
As a hospitality sponsor, your company name will be on the sponsor board. As part of your sponsorship, you will be allowed to set up adjacent to the pavilion to provide food which can consist of: Breakfast food and/or lunch, drinks. There will be one gun cleaning service in this area- first come. Each entrant will be given two tickets to vote for best food and first and second place trophy will be awarded to the two with most tickets.
- Station Sponsor** **\$200**
As a station sponsor, your company name will appear on the sponsor board. As part of your sponsorship, you will be asked to set up a tent at an assigned station to provide refreshments and snacks for shooters throughout the day. Only two sponsors per course.

SEE BACK OF THIS PAGE FOR SPONSORSHIP FORM

In order to receive full advertisement benefit of your sponsorship, your sponsorship form and payment must be received by May 1st, 2014.



COMMITTEE SPORTING CLAYS

Sponsorship Form

EMAIL SPONSORSHIP FORM:

Greg Rachal: grachal2@slb.com

IF PAYING BY CHECK, MAIL TO:

Yim Szeto
257 County Road 125
Hallettsville, Tx 77964

PLEASE CHECK THE LEVEL OF SPONSORSHIP YOU WISH TO CHOOSE

All sponsorship levels will receive next year's tournament information approximately one month before the general membership mail-out. All sponsors receive preference on shooting times when possible. All profits will be used for SPE scholarships, local charities, community service projects, and member services.

- | | | | |
|--|--|---|--|
| <input type="checkbox"/> Diamond Sponsor
\$7,500 | <input type="checkbox"/> Bronze Sponsor
\$1,500 | <input type="checkbox"/> Shotgun Sponsor
\$1,200 | <input type="checkbox"/> Corporate Sponsor
\$500 |
| <input type="checkbox"/> Platinum Sponsor
\$5,000 | <input type="checkbox"/> Entry Gift Sponsor
\$5,000 | <input type="checkbox"/> Shooter # Sponsor
\$1,000 | <input type="checkbox"/> Hospitality Tent Sponsor
\$300 |
| <input type="checkbox"/> Gold Sponsor
\$3,500 | <input type="checkbox"/> Shuttle Cart Sponsor
\$2,000 | <input type="checkbox"/> Scorecard Sponsor
\$1,000 | <input type="checkbox"/> Station Sponsor
\$200 |
| <input type="checkbox"/> Silver Sponsor
\$2,000 | | | |

Company _____ Contact Name _____

Mailing Address _____ Phone _____

City/State/Zip _____ Fax _____

METHOD OF PAYMENT

Payment: Check Visa MC AMEX DISC

Card Number _____ Expiration Date _____

Name as it appears on card _____

Signature _____

Email _____

(Card holder's email address required for all credit card payments)

Total to Charge Card _____

(Make checks payable to SPE-GCS)

■ New drilling and completion technologies
 ■ Custom-engineered solutions
 ■ Fit-for-purpose manufacturing
 ■ Faster response.

www.tiwtools.com
 ENGINEERED TO FIT

TIW CORPORATION A Pearce Industries Company

Rose & Associates

Courses Consulting Software
Improving E & P Effectiveness

Unconventional Resource Valuation Course (3 to 5 days)

UCRA Software
To model, value and risk drilling in resource plays

lisaward@roseassoc.com

Play
Portfolio
Prospect

COMMITTEE GOLF

MON
April 14

41ST ANNUAL SPE GULF COAST SECTION GOLF TOURNAMENT

MORNING & AFTERNOON

This Gulf Coast Section event is an important part of fundraising for our Scholarship Fund, which helps send several potential clients or co-workers to college. These scholarships are even more important now with an unprecedented increase in demand for engineers in all disciplines.

Come and join us at the biggest and best tournament in Houston!

Great golf, great prizes, great food!

REGISTRATION

<http://www.cvent.com/d/x4qlnf>

WHERE

*Kingwood Country Club
1700 Lake Kingwood
Kingwood, Texas 77339*

*Deerwood Country Club
1717 Forest Garden Drive
Kingwood, Texas 77345*

QUESTIONS

cconway@kb-machine.com



We Make It Work Right The First Time.

Deeper and deeper water. Larger projects.
More complex design challenges.
More people with highly specialized skills.
Fewer people who see the big picture.

GATE's full-service team takes a larger, systems view of the interactions and intricacies of the project as a whole. This enables us to develop solutions that cross many different disciplines and boundaries.

The result: smoother facility startups, higher up-time and reliability, less operating headaches and improved whole-life value for existing developments.

Materials & Corrosion
Subsea Engineering
Offshore Risk Management
Commissioning & Initial Startup
Chemical Systems Engineering
Flow Assurance
Water Injection

www.gateinc.com



Intellectual Property Attorneys

PATENTS

- Applications
- Patent Office Processes
- Litigation – Expert Witness

TRADE SECRETS

- Prepare/Develop Company Procedures
- Prepare/Evaluate Agreements
- Litigation - Expert Witness

TRADEMARKS

- Research & Applications

WWW.COOKE-LAW.COM

Phone: (936) 441-0102

Claude Cooke, SPE

Serving the Gulf Coast Region

RPS Knowledge Reservoir

Consulting
Technical Projects
Resourcing
Unconventional
Conventional
Deepwater
Production Solutions
Knowledge
Management

knowledge-reservoir.com



Performance Additives for Oil & Gas

Our products include performance additives for a variety of oilfield applications.

We offer unique solutions for:

- Stimulation
- Drilling
- Cementing

E-mail us at oilfield@momentive.com.



Dyna-Drill

Manufacturers of
Drilling Motor Components

- Mud Motor Power Sections (Sizes: 2 7/8" to 11 1/2")
- Coil Tubing Power Sections (Sizes: 1 11/16" to 3 3/4")
- Matrix-3® Coated Bearings
- Precision Machining

www.dyna-drill.com

Power That Lasts™



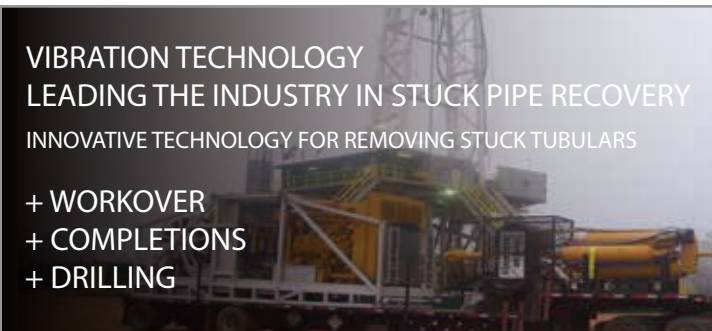
VIBRATION TECHNOLOGY
LEADING THE INDUSTRY IN STUCK PIPE RECOVERY
INNOVATIVE TECHNOLOGY FOR REMOVING STUCK TUBULARS

- + WORKOVER
- + COMPLETIONS
- + DRILLING



Vibration Technology

www.layne.com



EVENT RECAP

We want to thank the Young Professionals, HSSE-SR Study Group and the Community Service Committee for submitting their photos this month. If you would like your group to be recognized in the Connect with your wonderful photos, please send your photos by the 25th of every month to the Connect editor at editor@spgcs.org.



SPE GULF COAST SECTION DIRECTORY

Your guide to your organization leaders

Officers

CHAIR

Mike Strathman, The Trinity Group, Inc.
713-614-6227
mike-strathman@att.net

VICE-CHAIR

Jeanne Perdue, Occidental Oil and Gas
713-215-7348
jeanne_perdue@oxy.com

SECRETARY

David Flores, Consultant
281-381-5828
david_p_flores@yahoo.com

TREASURER

Robert Bruant, Jr.,
Pioneer Natural Resources Company
972-969-4573
robert.bruant@pxd.com

VICE TREASURER

Lucy King, Miller and Lents, Ltd.
713-308-0343
lking@millerandlents.com

CAREER MANAGEMENT

Patty Davis, PetroSkills
832-426-1203
Patty.Davis@petroskills.com

COMMUNICATIONS

Valerie Walker, Anadarko
832-636-3196
Valerie.walker@anadarko.com

COMMUNITY SERVICES

Amy Timmons, Weatherford
713-836-6563
amy.timmons@weatherford.com

EDUCATION

Gabrielle Guerre, Ryder Scott
713-750-5491
gabrielle_guerre@ryderscott.com

MEMBERSHIP

Xuan (Sun) VandeBerg Harris, Consultant
832-444-5143
xuan.harris@gmail.com

PAST CHAIR

Steve Baumgartner, Marathon Oil Corp.
713-296-3190
sbaumgartner@marathonoil.com

PROGRAMS

David Tumino, Murphy Oil Corp.
281-717-5123
tuminospe@hal-pc.org

SOCIAL ACTIVITIES

Jim Sheridan, Baker Hughes
281-432-9209
jim.sheridan@bakerhughes.com

TECHNOLOGY TRANSFER

Carol Piovesan, APO Offshore
281-282-9291
cpiovesan@apooffshore.com

YOUNG PROFESSIONALS

Simeon Eburi, Chevron
simeon.eburi@chevron.com
806-544-0829

DIRECTOR 2012-14

Alex McCoy, Occidental Oil and Gas
713-366-5653
alexander_mccoy@oxy.com

Kevin Renfro, Anadarko

832-636-8613
kevin.renfro@anadarko.com

Wolfgang Deeg, Shell

281-544-8279
wjfdeeg@spemail.org

DIRECTOR 2013-15

Trey Shaffer, ERM
281-600-1016
Trey.Shaffer@erm.com

John Lee, UH

713-743-4877
wjlee3@uh.edu

Deepak Gala, Shell

281-544-2181
deepak.gala@shell.com

SPE GULF COAST NORTH AMERICA REGIONAL DIRECTOR

Bryant Muller, Halliburton
281-818-5522
Bryant.Mueller@halliburton.com

Committee Chairs

AWARDS

James Rodgerson, BP
281-221-4085
james.rodgerson@bp.com

CONTINUING EDUCATION

Nii Ahele Nunoo, NOV
507-304 5416
Nii.Nunoo@nov.com

ESP WORKSHOP

Noel Putscher, Newfield
281-674-2871
nputscher@newfield.com

GOLF

Cameron Conway, KB Machine
281-217-0660
cconway@kb-machine.com

INTERNSHIPS

Gabrielle Guerre, Ryder Scott
713-750-5491
gabrielle_guerre@ryderscott.com

NEWSLETTER

John Jackson, CCR Technologies
713-998-3121
editor@spgcs.org

SCHOLARSHIP

Tanhee Galindo, Consultant
832-693-9010
gcs-scholarship@spemail.org

SPORTING CLAYS

Paul Conover, NOV
713-346-7482
paul.conover@natoil.com

TECHNOLOGY TRANSFER

Carol Piovesan, APO Offshore
949-232-6353
cpiovesan@apooffshore.com

TENNIS

James Jackson, Halliburton
713-366-5704
james.jackson@halliburton.com

WEB TECHNOLOGY

Shivkumar Patil, Aker Solutions
713-369-5352
Shivkumar.Patil@akersolutions.com

SECTION MANAGER

Kathy MacLennan, SPE-GCS
713-779-9595 x 813
kmaclennan@spe.org

Study Group Chairs

BUSINESS DEVELOPMENT

Steve Mullican, Grenadier Energy Partners
281-907-4120
smullican@grenadierenergy.com

COMPLETIONS & PRODUCTION

Mark Chapman, CARBO Ceramics
281-921-6522
mark.chapman@carboceramics.com

DIGITAL ENERGY

Rick Morneau, Morneau Consulting
281-315-9395
rickmorneau@outlook.com

DRILLING

Joe Tison, Greene Tweed
281-784-7805
wtison@gtweed.com

GENERAL MEETING

Raja Chakraborty, Shell
281-544-2148
Raja.Chakraborty@shell.com

HEALTH, SAFETY, SECURITY, ENVIRONMENT AND SOCIAL RESPONSIBILITY

Trey Shaffer, ERM
281-600-1016
trey.shaffer@erm.com

INTERNATIONAL

Owen Jones, ExxonMobil
Development Company
832-624-2019
owen.jones@exxonmobil.com

NORTHSIDE

Naval Goel
650-307-7267
navalgoel@hotmail.com

PERMIAN BASIN

Amy Timmons, Weatherford
713-836-6563
amy.timmons@weatherford.com

PETRO-TECH

Marci Nickerson, Consultant
713-446-3400
mnick52@sbcglobal.net

PROJECTS, FACILITIES, CONSTR.

Chris Shaw, Shell
281-544-6796
C.Shaw@shell.com

RESEARCH & DEVELOPMENT

Skip Davis, Technology Intermediaries
281-359-8556
skdavis@technologyintermediaries.com

RESERVOIR

Sunil Lakshminarayanan, Weatherford
713-849-1861
sunil.lakshminarayanan@weatherford.com

WATER & WASTE MANAGEMENT

Kira Jones, Momenive
281-646-2827
kira.jones@momenive.com

WESTSIDE

Andrea Hersey, Momenive
281-646-2805
andrea.hersey@momenive.com

CONNECT

Information

Newsletter Committee

CHAIRMAN | John Jackson
editor@spgcs.org

AD SALES | Pat Stone
starlite1@sbcglobal.net

BOARD LIAISON | Valerie Martone

NEWSLETTER DESIGN | DesignGood
designngood.com
designngoodstudio.com

SPE Houston Office

GULF COAST SECTION MANAGER

Kathy MacLennan | kmaclellan@spe.org

GCS ADMINISTRATIVE ASSISTANT

Sharon Harris | sharris@spe.org

HOURS & LOCATION

10777 Westheimer Road, Suite 1075

Houston, Texas 77042

P 713-779-9595

F 713-779-4216

Monday - Friday 8:30 a.m. to 5:00 p.m.

Photo Submissions

We are looking for member photos to feature on the cover of upcoming issues! Photos must be at least 9" by 12" at 300 DPI. Email your high resolution picture submissions to:
editor@spgcs.org

Change of Address

To report a change of address contact:

Society of Petroleum Engineers

Member Services Dept.

P.O. Box 833836

Richardson, Texas 75083-3836

1.800.456.6863

service@spe.org

Contact

For comments, contributions, or delivery problems, contact editor@spgcs.org.

ADVERTISE YOUR BUSINESS IN THE SPE-GCS NEWSLETTER OR ON THE SPE-GCS WEBSITE

Connect is printed 12 times per year and contains premium positions for advertisers wanting to reach some of the most influential oil & gas professionals in the world. We are now selling ads for the 2014-2015 program year, and our ad sizes have been updated. Please visit the SPEGCS website for more information regarding ad pricing and specifications.

FOR INFORMATION ON ADVERTISING IN THIS NEWSLETTER OR ON THE SPE-GCS WEBSITE, PLEASE CONTACT:

Pat Stone, Star-Lite Printing, Inc
281-530-9711
starlite1@sbcglobal.net

Why can Weatherford deliver more real time data at the wellsite than any other mudlogging company?

Tim has cabin fever.



**EXCELLENCE
FROM THE
GROUND UP™**

Our Global Operations Manager for Surface Logging Systems, Tim, is all smiles these days. That's because he and his team recently designed a new state-of-the-art mudlogging cabin. The spacious interior makes room for more laboratory services at the wellsite. Now exploration companies have access to more data in real time, so they can make better decisions faster. It's one more way Weatherford Mudlogging is committed to Excellence from the Ground Up.

SURFACE LOGGING SYSTEMS
www.weatherford.com/surfacelogging
mudlogging.services@weatherford.com



NON-PROFIT
ORGANIZATION
U.S. POSTAGE
PAID
PERMIT NO. 6476
HOUSTON, TX

SOCIETY OF PETROLEUM ENGINEERS
GULF COAST SECTION

10777 Westheimer Road
Suite 1075
Houston, TX 77042

CALENDAR

April 2014

Sunday	Monday	Tuesday	Wednesday	Thursday	Friday	Saturday
				<i>Research & Development</i>		
			1	2	3	4
		<i>Northside Petro-Tech</i>	<i>Career Management Westside</i>	<i>Board Of Directors Young Professionals</i>	<i>Auxiliary</i>	
6	7	8	9	10	11	12
	<i>Golf Tournament</i>	<i>Permian Basin</i>		<i>YP Networking Social Oil Patch Orientation</i>		
13	14	15	16	17	18	19
		<i>HSSE-SR</i>	<i>Completions & Production International</i>	<i>Reservoir</i>		
20	21	22	23	24	25	26
			<i>PF&C Lecture 1</i>			
			<i>Technology Transfer Business Development</i>			
27	28	29	30			
			<i>PF&C Lecture 2 Drilling</i>			