



Gulf Coast Section

OCTOBER
2015

CONNECT

SPE GULF COAST SECTION NEWSLETTER

HOW TO AVOID PROJECT TRAIN WRECKS

GENERAL MEETING P. 13

DISTINGUISHED LECTURER PROGRAM: ASSESSING AND APPLYING PETROLEUM ENGINEERING DATA FROM THE 2010 MACONDO BLOWOUT

DRILLING P. 18

TECH TALK: STATE OF THE EMPLOYMENT ADDRESS

PETRO-TECH P. 16

UPSTREAM STRATEGIES FOR THE GULF OF MEXICO – 2015 AND BEYOND

BUSINESS DEVELOPMENT P. 25

PROJECTS, FACILITIES & CONSTRUCTION SERIES

P. 10, 17, 19, 25

CHAIR'S CORNER



DR. IVOR ELLUL

2015 - 2016 SPE-GCS Chair

Houston, we have kick-off!

The SPE Gulf Coast Section 2015 – 2016 year officially kicked off on Friday August 21st at the Houston Westchase Hilton. And a rousing kick-off it was, too. We had record attendance of over 170 participating in a plenary session where we rolled out our review of the past year and plans for the coming year. This was followed by break-out sessions targeted at Treasury, Programs, Communications, and last but certainly not least, Volunteering.

As I shared in the plenary session and you can see from the chart below, we have come out of a challenging year in which we struggled to hit our financial targets. And as we are all aware, the year ahead looks to be equally challenging. Therefore, we have established a plan to deliver break-even results.



And how, one might ask, do we plan to do that in the current business environment? Well, we have several irons in the fire, and you will be hearing more about these as they launch during the course of the year. One that holds great promise is a Fundraising Drive led by our Sponsorship Chair, John Vozniak. We are offering three tiers of sponsorship – Platinum (\$50,000), Gold (\$30,000), and Silver (\$15,000).

Each of these tiers comes with a number of ways

in which the donor organizations will be recognized. These will range from name recognition on the cover of *Connect*, to complimentary attendance at study group meetings, among a host of other things. A full set of details relating to the Fundraising Drive is provided on **page 32** of this newsletter.

As with all organizations, a new year comes with the setting of objectives and goals whether one operates for profit or not. The GCS Board approved our 2015 – 2016 goals and I will summarize the primary ones below:

1. We aim to maintain, and if possible, increase attendance at our Study Group meetings. We plan to do this by continuing to offer excellent topics that are relevant and add value within the current environment.
2. We are launching a series of one-day introductory tutorials for the benefit of anyone who is thinking of involving themselves in a different discipline within Petroleum Engineering. The topics include Well Testing, Nodal Analysis, Flow Assurance, Reservoir Simulation, Artificial Lift, and Managed Pressure Drilling. We have presenters who have agreed to conduct these tutorials on a pro-bono basis – a true example of volunteerism.
3. With the oil and gas environment in Mexico becoming increasingly active and interesting, we are looking to hold a technical event jointly with the Mexico SPE Section.

4. We have set an objective to maintain the number and overall dollar figure of scholarships that we awarded in 2014 – 2015.
5. We will hold a joint event between our Project Facilities and Construction Study Group and the SPE Flow Assurance Technology Section.
6. We plan to grow OilSim and Casino Night—two exciting new networking events that we launched this past year.
7. We hope to emulate the fabulously successful Executive Breakfast that we held last year.
8. We will initiate the port of our website SPEGCS.org to a framework hosted by SPE International. This will result in substantial economic and collaboration benefits.
9. We are launching an initiative aimed at enhancing our presence within the industry and in the media. This will take advantage of current social media trends and technology.
10. Deploying a successful Fundraising Drive, as discussed above, is clearly one of our objectives.

11. We plan to deliver a break-even year.

Each of the above goals has a name (or two) associated with it, and as you can see, we are in for an active year. But, as they say, if you need something done, give it to someone who is busy!

I would like to close by recognizing all the hard work that takes place behind the scenes in each and every sector of the Gulf Coast Section. Considering that all volunteers have a day job, it is impressive to see everything that gets accomplished and with such efficiency. One must also not forget to mention the superb management and guidance provided by Kathy MacLennan, Sharon Harris, and team, a true dynamo of an organization.

All the best!

GCS ENERGY TICKER



October CONTENTS

STUDY GROUPS

- 9** **Research & Development**
10.1.15
Entrepreneurs Investing in Small Technology Companies
- 10** **Project, Facilities & Construction**
10.6.15
Session 1: The Value of Facility Engineers
- 11** **Waste & Water Management**
10.6.15
Taking Stock of Water Management in 2015
- 13** **General Meeting**
10.8.15
How to Avoid Project Train Wrecks
- 15** **Northside**
10.13.15
The Emergence of Advanced Simulation Technologies in the Upstream
- 16** **Petro-Tech**
10.13.15
Tech Talk: State of the Employment Address
- 17** **Projects, Facilities & Construction**
10.13.15
Session 2: Setting Up Controls and Safety Systems from an Overall View
- 18** **Drilling**
10.14.15
Distinguished Lecturer Program

- 19** **Projects, Facilities & Construction**
10.20.15
Session 3: Design with a View of Operations and Maintainability
- 21** **Westside**
10.21.15
Optimizing Completions in Horizontal Wells
- 23** **Reservoir**
10.22.15
Practical Aspects of Reservoir Management and Production Optimization
- 25** **Projects, Facilities & Construction**
10.27.15
Session 4: The Facilities Engineer of Tomorrow: Faster, Stronger, Smarter – and More Successful Too!
- 26** **Completions & Production**
10.28.15
A Critical Reexamination of DFIT Interpretation Methods
- 27** **Business Development**
10.28.15
Upstream Strategies for the Gulf of Mexico – 2015 and Beyond

COMMITTEES

- 28** **Auxiliary**
10.9.15
Lunch: Steamboat House
- 29** **Community Service**
10.17.15
Energy Day

- 29** **Young Professionals**
10.10.15
Volunteering at the Playworks: Junior Coach Leadership Program Kickoff
- 31** **Career Management**
10.20.15
SPE-GCS Oil Patch Orientation
- 35** **Young Professionals**
10.17.15 & 10.24.15
Rebuilding Together Houston
- 33** **Young Professionals**
10.20.15
The Career Cruise: Navigating Your Career in Uncharted Waters
- 37** **Tennis**
11.05.15-11.07.15
32nd Annual Tennis Tournament

MORE

- 32** **2015-16 SPE-GCS Sponsorship Opportunities**
- 35** **2016-17 SPE-GCS Scholarship Application**

IN EVERY ISSUE

- 5** **SPE-GCS Membership Report**
August 2015
Volunteer Spotlight
Rini Assad
- 6** **Then & Now**
Buddy Woodroof
- 38** **Event Recap**
Young Professionals
- 41** **Student Chapter Section**
TAMU-SPE
- 42** **SPE Gulf Coast Section Directory**

BOARD OF DIRECTORS MEETING

THURSDAY, OCTOBER 15TH / 7:30 TO 10:30 AM

Location **SPE HOUSTON OFFICE**

10777 Westheimer Rd., Suite 1075, Houston, TX 77042

Event Contact **SHARON HARRIS**

713-457-6821 / 713-779-4216 FAX / sharris@spe.org



Reclaim Your Time.

Entero[®] MOSAIC[™]

Reserves, Economics, and Declines Software

Isn't it time to stop manipulating data through the backend, creating manual queries to report in Excel, questioning your application security, getting frustrated with poor scenario comparisons, or using 3rd party tools to enter and edit data?

Entero Mosaic's *ASSET INTELLIGENCE* lets you do your work faster, with less effort. It provides **one comprehensive solution** that supports corporate, project, and well level processes for reserves, economics, and declines.

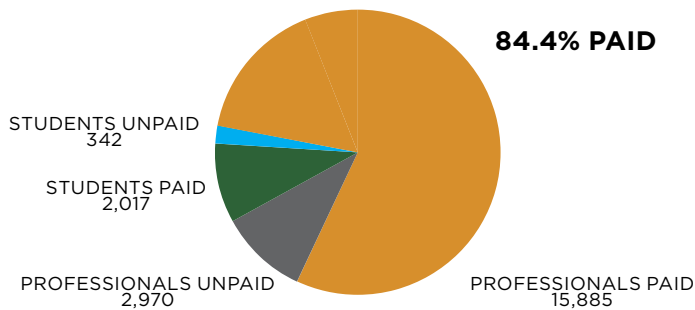
- ◊ **SPEED:** Go from weeks to hours in entry, editing, evaluating, reconciling, and reporting
- ◊ **EFFICIENCY:** Experience up to 50% in productivity gains
- ◊ **INTEGRITY:** Have confidence in your data with better visibility
- ◊ **TRUST:** Improve security through role based user/data management
- ◊ **INSIGHT:** Built-in stored results with scenario comparisons at the portfolio level

Learn more at www.entero.com/mosaic, or call 713.446.4633.

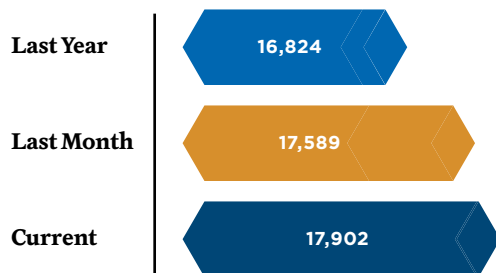
entero
energy software

SPE-GCS MEMBERSHIP REPORT August 2015

TOTAL SPE-GCS MEMBERSHIPS



PAID MEMBERSHIPS TRENDS



	PAID	UNPAID	TOTALS
Professional	15,885	2,970	18,855
YP	-	-	-
Students	2,017	342	2,359
HCC	164	33	197
Rice	88	14	102
Texas A&M	1,235	180	1,415
UH	479	107	586
Unassigned	51	8	59

Current	17,902	3,312	21,214
Last month	17,589	3,725	21,314
Last year	16,824	3,493	20,317

DON'T MISS OUT
RENEW YOUR DUES **TODAY!**



VOLUNTEER SPOTLIGHT RINI ASSAD

This month the SPE Gulf Coast Section is pleased to recognize Rini Assad as the volunteer of the month. She served as the 2014-2015 SPE-GCS YP Communication Chair, providing support with the monthly newsletter, eNewsletter, social media, website maintenance, YP App, Executive Club, and Company Champions.

Rini has been employed with Scientific Drilling since 2012 as their Marketing Projects & Multimedia Manager, where she leads the company's most challenging and strategic product & service commercial launches, company website, social media strategy & implementation, targeted advertising, and marketing collateral development. She also leads a team of creative professionals who transform sales & marketing strategies into an engaging visual solution on a global scale. Her team focuses on delivering both quality and quantity with an emphasis on brand identity, design, layout, and usability. Before her time with Scientific Drilling, Rini was employed for five years at National Oilwell Varco, working in both their Rig and Downhole Divisions. Rini holds a BFA in Media Arts and Animation from the Art Institute of Houston.

"The world is hugged by the faithful arms of volunteers."

Thank you, Rini!

INWOOD SOLUTIONS, LLC
Enhanced oil recovery • Petroleum engineering

Petroleum Engineering
Enhanced Oil Recovery
Project Management
Profitability Analysis
Reservoir Simulation

Dr. J Roger Hite
Inwood Solutions, LLC
(713) 385-5343
hite@inwood-solutions.com

THEN & NOW

COLUMN BY BUDDY WOODROOF

OCTOBER 1925

Service providers are busily preparing advertising copy describing their contributions to the drilling of the E.J. Miley #6 well, which is being touted as the world's deepest well. It was located in Athens (no, not Athens, Texas, but Athens, California).

Here's one from the "old adage" archives... "A poor workman blames hi stools." That sounds to me like a typo that became an old adage.

The International Petroleum Exhibition and Congress holds its annual meeting in Tulsa, and some of the intriguing activities planned include the selection of this year's "Queen Petrolia" (Miss Ramona Marcella Trees is this year's winner) and a meeting of the Order of the "Knights of the Derrick" (sounds Masonic related to me).

The debate rages on...Are those new-fangled galvanized steel derricks truly more cost-effective over the life of the derrick than the old-faithful wooden derricks? Apparently the drilling crews are becoming enamored by the steel units because of the fire hazards and continual layoffs from repair downtime associated with the conventional wooden units.

OCTOBER 1955

"River-Fracs," employing river sand and untreated San Juan River water, are proving to be an effective fracturing fluid for gas wells in the "Four Corners" area and are reportedly saving operators up to \$4,200 per gas well completion.

The API is sponsoring an hour-long nationwide television program picturing what life will be like 21 years down the road due in part to contributions by the oil industry. Every technical marvel of the future will be presented as top-quality entertainment by such stars as Dave Garroway, Sid Caesar, Nanette Fabray, Wally Cox, and Arlene Francis. (Maybe some of you old hands know who these people are.)

The East Texas field turns 25 and is still pouring out 220,000 bbl of oil a day. This colossus of American oil fields has produced 3.2 billion bbl of oil to-date and is expected to top 6 billion bbl by the year 2030.

A second producing formation only 40 ft below the 4,906 ft discovery sand is reported in Israel's first oil well.

East Texas crude oil - \$2.90/bbl; U.S. active rig count - 2,753

OCTOBER 1985

Activity is picking up in China, as Atlantic Richfield, Santa Fe International, and China National Offshore Oil sign an agreement to develop the giant Yacheng gas field, while Bohai Petroleum and Japan's Chengbei Oil Development Corp. begin production from the Chengbei field in the Bohai Sea.

The House of Representatives inserts an amendment in a budget bill that would require all offshore rigs and platforms—except those used off Alaska—to be constructed in the U.S.

Shell reports plans for a new generation of semisubmersibles for use in the Gulf of Mexico. The new semisubmersibles will ultimately be outfitted to operate in 6,000 ft water depths.

London's International Petroleum Exchange will begin trading a Brent blend crude oil futures contract by the end of the year.

U.S. active rig count - 1,906

THE REST OF THE YARN

This month the "fat cats" at the turn of the 20th century weigh in on the free enterprise system.

President McKinley's lack of concern over the monopolization frenzy was just fine with men like John D. Rockefeller. "The day of combination is here to stay," he once said. "Individualism is gone. Never to return." He hadn't reckoned on Teddy Roosevelt. Five months into his presidency, TR took Wall Street by surprise. He launched an antitrust suit that demanded the breakup of Northern Securities, a holding company organized to consolidate three railroads in the Pacific Northwest. By targeting that company, Roosevelt had also chosen to move against the man who epitomized the empire of money, New York financier J. Pierpont Morgan.

Beefy, saturnine and phenomenally wealthy, with a plump red nose caused not by drink but by the skin disease rhinophyma, Morgan held immense power over the U.S. economy. In a day when there was no Federal Reserve to control the money supply or adjust interest rates, he operated at times as a one-man central bank. By withdrawing his approval from a shaky deal, he could cause a panic. By pouring millions into tottering banks, he could end one. He did more than assemble capital for new ventures. He took over mismanaged companies, installed his own men and supervised operations. As he exercised his unchallenged powers, he could not abide interference.

His biographer Jean Strouse has cast doubt on whether he actually spoke the words that have been attributed to him: "I owe the public nothing." But if he didn't say them, he should have. As a summary of his outlook, those words could hardly have been topped.

Like Rockefeller and Andrew Carnegie, Morgan believed in free enterprise but had seen enough of unbridled competition. For much of his career, he had assembled financing for the railways whose stupendous growth had revolutionized the U.S. after the Civil War. Boom and bust, desperate price cutting, collapsed enterprises—the bumpy realities of the railroad business left Morgan with a horror of economic disorder. As he viewed it, profits required stability. Stability required concentration. Concentration means trusts.

Next month, TR takes on J.P. Morgan.

THEN & NOW OCTOBER QUIZ

The foremost source of oil in the Texas Panhandle circa 1925 was what formation?

ANSWER TO SEPTEMBER'S QUIZ

The quickest identifier of an engineering student on college campuses circa 1955 was dangling from the student's belt in a leather case, the precursor to today's computer—a slide rule.

**CONGRATULATIONS TO
MAY'S WINNER
Gilberto Barcenás**

If you would like to participate in this month's quiz, e-mail your answer to contest@spe.org by noon October 15. The winner, who will be chosen randomly from all correct answers, will receive a \$50 gift card to a nice restaurant.

Mi4 Corporation - Oil and Gas Software & Services - www.mi4.com

Mi4

OUR PRODUCTS:

- PRODUCTIONER
- PANDELM
- REDD

OUR SERVICES:

- PRODUCTION REPORTING
- FINANCIAL REPORTING
- INTEGRATION
- CONSULTING

"If you want your Data done right, ~~do it yourself.~~ Leave it to us."



Try our iPhone app

713-401-9584
info@mi4.com



Know What to Expect...



Expect What you Know.

Third-party facilitation of

HazID/HazOP

Hazard Identification/
Hazardous Operations

DWOP

Drill Well
On Paper

**Reduce Risks/Costs
Improve Efficiency**



2 Northpoint Dr., Ste. 700, Houston TX 77060
281.774.1000 / www.signalengineering.com

A large offshore oil rig is shown in the ocean under a clear blue sky. The rig has a complex structure with a tall derrick and various cranes. The water is dark blue with white foam from the waves. A semi-transparent blue box is overlaid on the left side of the image, containing the text 'Push the boundaries.'

Push the boundaries.

You want to optimize your completion and production (C&P) processes and increase the value of your reservoir. We get that. We can help you do that too.

Our decades of field-proven experience push traditional boundaries. This experience reproduces success and helps avoid costly mistakes. Our Total Systems Approach to your C&P challenges also includes meticulous planning and the efficient implementation of the world's most reliable technologies—specifically designed to improve access to reserves, maximize production, and increase your ultimate recovery.

Call us or visit BakerHughes.com/GoM-pushtheboundaries and learn how our Total Systems Approach pushes the boundaries of what was previously thought possible.

+1 713-268-6218



RESEARCH & DEVELOPMENT

Entrepreneurs Investing in Small Technology Companies

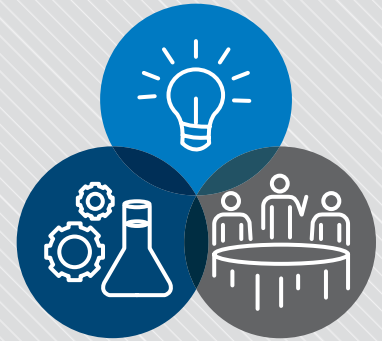
Our core purpose at Surge is to enable entrepreneurs to solve the world's energy problems. We do this by providing entrepreneurs access to world-class (and world-leading) experts, the largest customers in our industry (that also serve as our investors and partners), the global energy ecosystem, and a variety of capital sources. Our partners include Shell, ExxonMobil, Saudi Aramco and others. Hossein will provide insights on how Surge works with small technology companies and how this approach can help further your team's new product and technology agenda.

DR. HOSSEIN ROKHSARI

Dr. Hossein Rokhsari is the Managing Director of SURGE Ventures, a technology investment firm based in Houston. SURGE enables entrepreneurs to solve the world's energy problems by finding, investing in, and accelerating the growth of early stage technology companies. Since 2013, Hossein has led 20+ investments in areas such as seismic interpretation, offshore automation, down-hole data analysis, oilfield water management, and mobile oil field technologies. Prior to SURGE, Hossein spent 8 years at McKinsey & Company, in the Energy and Oil & Gas practice, advising CEOs and executives of Fortune 100 companies, private equity investors and sovereign wealth funds in North America, Europe, Middle East and Southeast Asia.

Prior to McKinsey, Hossein received his PhD in applied physics from the California Institute of Technology. At Caltech, his research focused on building micron-sized devices on semiconductor chips and replacing electronic signal processing by manipulation of laser light from fiber optics. His discovery resulted in observation of mechanical vibrations induced by laser for the first time and opened a fast growing field in experimental physics that could allow detection of the gravitational waves predicted by Einstein in 1916.

Hossein grew up in a family of artists and managed an art gallery during his college years. This inspired him to be an active member of the Houston Arts Alliance. Over the last few years, Hossein has advised art organizations in Houston including Musiqa, a contemporary music group, and Gulf Coast Literary Journal.



EVENT INFO

Thursday
10.1.15

11:30 AM – 1:00 PM

SPEAKER

Hossein Rokhsari
Managing Director
SURGE Ventures

LOCATION

Norris Westchase Center
9990 Richmond Ave., Suite 102
Houston, TX 77042

EVENT CONTACT

Kitty Harvey
281-901-3245
kitty.harvey@c-a-m.com

MEMBERS

\$40

NON-MEMBERS

\$45

**SESSION 1**

Tuesday
10.6.15

4:30 PM – 6:00 PM

SPEAKER

James R. Deaver, P.E.
Engineering Advisor
Oil Field Development
Engineering, LLC

LOCATION

Wood Group Mustang, Inc.
Stallion Building Event Room
17325 Park Row
Houston, TX 77084

EVENT CONTACT

Bryan W. Marlborough
281-647-8385
bryan.marlbrough
@woodgroup.com

MEMBERS

\$35

NON-MEMBERS

\$40

STUDENTS

\$10

PROJECTS, FACILITIES & CONSTRUCTION

The Value of Facility Engineers

Engineering projects in oil and gas facilities are becoming increasingly complicated with more specialized discipline silos. While many of the business and project management evaluations say that all designs should be holistic, most are in fact optimized to a discipline or even component basis.

Project performance is getting worse, yet we have much better tools in every aspect. Simulation, modeling, design, scheduling, and document management are just a sampling of the tools we have at our disposal.

While the focus has been primarily on project management skills and approaches, a broad technical understanding of all engineering disciplines is just as important. This presentation will discuss developing facility engineers into an engineering management role to complement and support the project manager for a successful project.

JAMES R. DEAVER

James R. Deaver, PE is an Engineering Advisor at Oil Field Development Engineering, LLC with more than 30 years of industry experience. He has worked for both operators and engineering contractors in discipline engineering, engineering management, and project management roles. Project experiences include onshore, shallow and deepwater offshore, domestic and international. He has a BS in Petroleum Engineering from Texas A&M.

SPE-GCS REGISTRATION LINK: <http://www.spegcs.org/events/2015/10/projects-facilities-construction/>

WASTE & WATER MANAGEMENT

Taking Stock of Water Management in 2015

This presentation will offer an overview of the complexity of low-cost treatment of oil and gas water and technical challenges. It will also explore a volumetric and spending review of current water management practices, and where those systems are strained, including sourcing, transportation, storage, treatment, and disposal. We will present a case study approach to assessing common treatment methods along with a discussion of what works cost effectively. The presentation will also offer a discussion of downturn impacts on water management programs and the changes we should anticipate over the next 18 months.

LAURA CAPPER



CAP Resources is a Houston-based oil and gas and technology consultancy that specializes in market assessment, strategy development for emerging market opportunities, technology commercialization, operations planning, due diligence / transaction support services, and aggressive growth strategies. As president, Laura Capper brings 25 years of experience for public and private companies including integrated oil and gas companies, oilfield service companies, technology transfer offices, and private equity and venture capital firms. CAP Resources has serviced over 600 clients and contributed to the development of over \$3 billion in value associated with new venture launches and mergers, acquisitions and investment activity. A primary focus of the firm has been matters related to unconventional exploration and production trends and practices, water management and treatment technologies, mobile field data collection and guidance systems, and environmental and waste handling practices in the oilfield. CAP Resources has authored a series of in-depth reports tracking the state of water management and investment opportunities in U.S. and world unconventional shale plays.



EVENT INFO

Tuesday
10.6.15

11:30 AM – 1:00 PM

SPEAKER

Laura Capper
President
CAP Resources

LOCATION

Petroleum Club of Houston
1201 Louisiana Street, 35th Floor
Houston, TX 77002

EVENT CONTACT

Reshmy Mohanan
713-344-4094
rmohanan@brt-chem.com

MEMBERS

\$40/\$50 Walk-In

NON-MEMBERS

\$50/\$50 Walk-In

STUDENTS

\$10

DOES YOUR RESERVES
SOFTWARE CREATE
MORE QUESTIONS
THAN ANSWERS?



Why keep using outdated economics and reserves software that's hard to learn and costly to support?

Get answers with Value Navigator® – forecasting, economics and reserves in one highly accurate, easy-to-learn system. Val Nav is feature-rich and robust. It's backed by expert conversion assistance, and includes ongoing support, training, and version upgrades. No wonder more than 300 E&P companies worldwide see it as the perfect answer to manage and report on over 2.7 million boe/day in total production.

Get all the answers about Val Nav.

Visit energynavigator.com/answers or call Sheldon Winters at 1-866-856-9544.



Val Nav®

by ENERGY NAVIGATOR

GENERAL MEETING

How to Avoid Project Train Wrecks

This presentation will take a data driven and experiential approach as to why projects fail. Key drivers for project failures and their root causes will be addressed. Best practices to support project success based on real world examples will be presented.

This presentation includes lots of anecdotes or “Company XYZ” examples that make for an interesting experience.

As a project management consultant, Pete Luan has reviewed hundreds of projects and in excess of \$100B in capital expenditures. He has interviewed and worked with approximately 3000 project team members and senior management associated with these projects. This presentation is the result of this body of work.

PETE LUAN



With over 30 years of project and risk management, organization transformation, and consulting experience, Pete Luan guides his worldwide clients into improving organization and project performance. Serving as a trusted advisor to top executives, he not only helps companies improve their project predictability and performance, he also leads changes to achieve those goals. Some of his clients include Chevron, BP, Conoco Phillips, Chevron-Phillips Chemical, Talisman, Oceaneering, Maersk Oil, Marathon, Addax, Kosmos, Anadarko, Noble Energy, and TNK-BP.

Prior to building his consulting business, Pete managed world leading upstream and chemicals manufacturing projects across the globe for BP for 20 years. Before joining BP, he was a Captain in the US Army.

Pete has leveraged his experience as a project management instructor for a noted firm in the E&P space. He has authored numerous SPE articles and developed courses on project and risk management best practices. Pete holds BS and MS degrees in mechanical engineering from Rice University and has completed the Executive Program at Harvard Business School. He is PMP certified and a previous member of the National Speakers Association.



EVENT INFO

Thursday
10.8.15

11:30 AM – 1:00 PM

SPEAKER

Pete Luan
President
Pete Luan & Associates, LLC

LOCATION

Petroleum Club of Houston
1201 Louisiana Street, 35th Floor
Houston, TX 77042

EVENT CONTACT

Barry Faulkner
281-627-8790
barryfaulkner@earthlink.net

MEMBERS

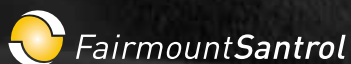
\$35

NON-MEMBERS

\$40

CURABLE RESIN-COATED SAND
INCREASED NPV
\$115K
PER STAGE BY
REDUCING
WELL MAINTENANCE

REDUCING COST PER BOE.
READ THE WHOLE STORY AT FMSA.COM/CURABLENPV



You'll save money with
the right solutions.

Maximize the return on your investment
with a customized combination of drill bit,
underreamer, and jar technologies from
NOV. Let's work together to optimize a BHA
for your application.



**Bespoke
solutions.**

When it comes to petrophysics, one size
does not fit all. Spend smarter with
our made-to-order interpretations.

petrophysicalsolutions.com



Petrophysical Solutions, Inc.

PETROPHYSICS THAT PAYS OFF

NORTHSIDE

The Emergence of Advanced Simulation Technologies in the Upstream

Access to energy remains a key enabler for growth and prosperity in the world economy. The sources and supplies of energy have evolved over the last 150 years, yet hydrocarbons such as coal, crude oil, and natural gas continue to fuel world industrialization. ExxonMobil has been a leader in the exploration, development and production of hydrocarbons, in part due to long-standing commitments to R&D and a strong technology portfolio.

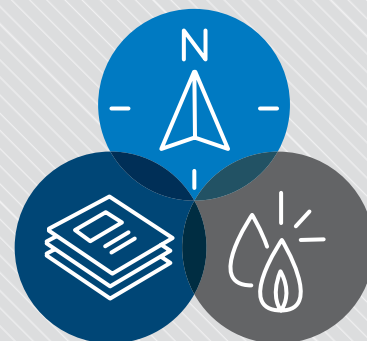
Advanced simulation technologies, such as finite element analysis (FEA) and computational fluid dynamics (CFD), have progressively played an increasing role in the success of the energy industry, much like it evolved in the aerospace and automotive industries a decade or so ago. Never have the technical changes in the oil and gas sector been more prevalent and ambitious than in the last 30 years, changes that include worldwide utilization of horizontal well drilling and hydraulic fracturing; the emergence of long-distance liquefied natural gas (LNG) transport; and the monetization of previously inaccessible hydrocarbons in deepwater, the arctic, and from unconventional resources in an environmentally friendly manner.

ExxonMobil was an early adopter of FEA software shortly after its availability to the industry in the late 1970s and rapidly became a significant user to complement its existing technology portfolio. ExxonMobil also moved into CFD software as it became commercially available. This presentation reflects on a three-decade long journey that highlights some of the technical achievements and increasing contributions of advanced simulation technologies within the upstream oil & gas industry.

TED A. LONG



Dr. Ted A. Long is a Subsurface Engineer for the ExxonMobil Upstream Research Company in Houston, Texas, and is the Well Modeling Advisor providing support to upstream reservoir, drilling, and completions groups. In addition to championing the application of computational fluid dynamics to new areas, he has worked in a variety of technical areas in R&D with ExxonMobil including water injection, sand control, fracture modeling, downhole sensing, and well/completion modeling. Prior to joining ExxonMobil, Ted worked in turbulent mixing layers, nuclear safety analysis and control valve design. Ted received BS, MS, and PhD degrees in Mechanical Engineering from the University of Arizona and received 17 patents during his 24-year career.



EVENT INFO

Tuesday
10.13.15

12:00 PM

SPEAKER

Dr. Ted A. Long
Well Modeling Advisor
ExxonMobil Upstream
Research Company

LOCATION

Greenspoint Club
16925 Northchase Dr.
Houston, TX 77060

EVENT CONTACT

Sumitra Mukhopadhyay
281-784-5742
smukhopadhyay
@superiorenergy.com

MEMBERS

\$35/\$50 Walk-In

NON-MEMBERS

\$40/\$50 Walk-In



EVENT INFO

Tuesday
10.13.15

11:30 AM – 12:30 PM

SPEAKER

Cheryl Collarini
Chairman
Collarini Energy Staffing Inc.

LOCATION

Sheraton Brookhollow
3000 North Loop W
Houston, TX 77092

EVENT CONTACT

Jessica Morgan
281-685-0594
jmorgan
@blackstoneminerals.com

MEMBERS

\$38/\$48 Walk-In

NON-MEMBERS

\$38/\$48 Walk-In

STUDENT

\$10

PETRO-TECH

Tech Talk: State of the Employment Address

When it seems the “Not Hiring” sign is in the window of almost every business, or the corporate ladder seems very steep, you must plan how to play up your strengths skillfully and intentionally. Your resume, your communication skills, your appearance, and even the avenues you use to connect with other people all speak something about who you are. Maybe you’re just looking to advance your career or land a new promotion. You are always meeting people who can help your career; they are watching you, your attitude, and your actions. The best thing we can all do is seek out the opportunities and meet the challenges to get what we want. Join us for a conversation about marketing YOU for your current or future job. Everything you are and can be should be everything your dream employer wants!

CHERYL COLLARINI



Cheryl Collarini holds a bachelor’s degree in civil engineering from M.I.T. and an MBA from the University of New Orleans. She began her career with Mobil Oil as a civil engineer, operations engineer, development projects engineer, and reservoir engineering supervisor. She formed Collarini Engineering Inc. in 1985 to conduct independent reserve appraisals and field studies. One of her long-term clients, Mobil then ExxonMobil, engaged her to teach Petroleum Investment Decisions for over 18 years, including authoring the requisite manuals. In 1995, she founded Collarini Energy Staffing to provide technical staff to customers on-site, placing upstream professionals, temporary and fulltime, in positions all over the world. In 2003, she accepted a partnership in Explore Enterprises LLC and served as VP of Engineering. In 2005, she returned to Collarini Energy Staffing as Chair after a successful sale of the Explore Enterprises assets and started Etroa Resources LLC in 2008, another exploration and production company located in Covington, LA. Having recently left Etroa, her current roles are Chairman of Collarini Energy Staffing and Manager and owner of DGC Energy, which consults in petroleum engineering and invests in oil and gas projects.

PROJECTS, FACILITIES & CONSTRUCTION

Setting Up Controls and Safety Systems from an Overall View

With the advent of cheap computing power, computer-controlled safety and operating systems in the form of Programmable Logic Controllers (PLCs) have moved to the forefront of upstream facility control systems. The technology is developing so quickly that dedicated specialists are required simply to stay abreast of the latest equipment and to implement the newest capabilities.

While these dedicated specialists are able to bring the latest enhancements to the project, their laser-like focus on technology often leads to including features just because they're available. As a result, there has been somewhat of a role reversal from the traditional facility configuration responsibilities.

The facility engineer (the generalist) is now often tasked with finding a way to incorporate this newest technology into his facility design instead of making the technology supportive of the optimum process/production/layout configuration. A prime example of this is when a dedicated air-conditioned "Process/Control" building is required in order to house the computer(s), multiple work stations, and redundant power supplies are needed to support the state-of-the-art systems.

It is incumbent on the facility engineer (the generalist) to ensure that the optimum facility configuration remains the primary consideration, and that complex control and safety systems are included only to the extent necessary for safe and reliable operation. This presentation will discuss the role of the facility engineer in leading the development of the control and safety systems, and will provide some examples of simple, safe and reliable systems that also communicate essential information to the operators and maintenance staff.

LEW SKAUG



Lew Skaug is a principal engineering consultant at OFD Engineering in Houston, TX. He holds a bachelor's degree in engineering from Harvey Mudd College in Claremont, CA, and has worked in the upstream segment of the oil and gas industry for more than 40 years. He has lived and worked in New Orleans, Houston, London, and Kuwait while doing production facility design, project engineering and project management, as well as preventive maintenance and operations planning. He has a strong background in centrifugal machinery, including gas turbines, compressors, and generators.

SPE-GCS REGISTRATION LINK: <http://www.spegcs.org/events/2015/10/projects-facilities-construction/>



SESSION 2

Tuesday
10.13.15

4:30 PM – 6:00 PM

SPEAKER

Lew Skaug
Principal Engineering Consultant
Oil Field Development
Engineering, LLC

LOCATION

Wood Group Mustang, Inc.
Stallion Building - Event Room
17325 Park Row
Houston, TX 77084

EVENT CONTACT

Bryan W. Marlborough
281-647-8385
bryan.marlbrough@woodgroup.com

MEMBERS

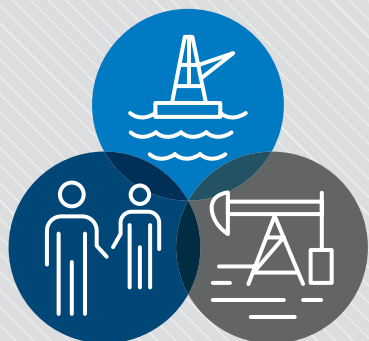
\$35

NON-MEMBERS

\$45

STUDENTS

\$10



EVENT INFO

Wednesday
10.14.15

11:30 AM – 1:00 PM

SPEAKER

John Turley
Retired, Marathon Oil Company
Drilling and Completions

LOCATION

Hilton Houston North -
Greenspoint
12400 Greenspoint Dr.
Houston, TX 77060

EVENT CONTACT

Tom Wick
713.806.2631
fieldwick2@gmail.com

MEMBERS

\$35

NON-MEMBERS

\$45

STUDENTS

\$10

DRILLING

Distinguished Lecturer Program: Assessing and Applying Petroleum Engineering Data From the 2010 Macondo Blowout

In April 2010, the Macondo blowout in the U.S. Gulf of Mexico killed 11 men, burned and sank the Deepwater Horizon drilling rig, and devastated the Gulf. Investigative authorities queried mechanical systems, operating decisions, corporate cultures, safety procedures, and testimony by survivors, academics, experts, and executives. Meanwhile, industry personnel need succinct, non-litigious, technical answers to fundamental questions about the cause of the blowout for application to future projects. Such answers define the specific mechanics, actions, and decisions on the rig that collectively opened a pathway into a cased-and-cemented deepwater wellbore and allowed hydrocarbons to flow unobserved from a high pressure reservoir to eventually erupt over the derrick and continue even after the blowout preventers were closed.

To unravel the cause of the blowout, data during the well's final hours are assessed and defined using petroleum-engineering fundamentals, including wellbore mechanics, hydrodynamics, inflow performance, fluid properties, well-control principles, etc. The data analysis reveals a fateful chain of events: forming an annulus-to-wellbore leak, exacerbating the leak, testing and declaring the well secure, causing the well to flow, and allowing the well to flow until too late, even for the blowout preventers. The technical assessment leads to conclusions that define those factors that contributed to the blowout, as well as those that caused it.

From the presentation, SPE members and a wider audience from across the industry and beyond will see by example the necessity and importance of applying petroleum engineering and process management fundamentals to day-to-day drilling work, in real time, both in the office and on the rig. From the Macondo assessment, a process-interruption protocol is defined, which can be applied to wells around the world, whether deep or shallow, onshore or offshore.

JOHN TURLEY



J. A. (John) Turley taught petroleum engineering at Marietta College before joining Marathon Oil Company, where he served as Gulf Coast Drilling Manager, UK Operations Manager, Manager of Worldwide Drilling, and Vice President, Engineering and Technology. He holds a professional degree in petroleum engineering from Colorado School of Mines, an MS in ocean engineering from University of Miami, and an executive management degree from Harvard University. Post-retirement, he independently researched the 2010 Macondo blowout and published "The Simple Truth," a facts-based tome in which he examines the engineering causes of the Macondo blowout aboard the Deepwater Horizon. His first SPE paper (6022), "A Risk Analysis of Transition Zone Drilling," was published in 1976. In 2014, he published SPE-167970-MS, "An Engineering Look at the Cause of the 2010 Macondo Blowout." Turley, a member of SPE's Legion of Honor, has served SPE in academic and conference capacities, but most enjoyed chairing SPE's Education and Accreditation Committee.

PROJECTS, FACILITIES & CONSTRUCTION

Design with a View of Operations and Maintainability

The design effort for an oil & gas facility project is a critical period in the facility operability process. Critical design activities will usually occur in three of the stages in the lifecycle of a major capital project: pre-FEED, FEED, and EPC. Having operability & maintainability as design criteria is critical to the creation of a viable business asset.

The pre-FEED stage should see the development of an operating philosophy and a corresponding basis of design for the asset. These will likely not be 100% complete at the end of this stage. However, a bulk of the effort will likely take place and these documents should be approximately 75% complete at the end of the pre-FEED stage.

The FEED stage is perhaps the most critical stage for operability & maintainability. This stage presents the opportunity for designers of the facility and the designers of the operations organization to optimize the business value of the asset by ensuring the design truly meets the economic goals set by the company. This will enable the evaluation of trade-offs between capital expense and operating expense in the design.

During detail design, having engineering and operations work closely together will ensure that the facilities can be operated in a safe and efficient manner. This presentation will discuss some of the various processes and activities to help ensure facilities that are both operable and maintainable.

BILL CAPDEVIELLE



Bill Capdevielle is an oil & gas consultant with 40 years of experience. He earned a BS in petroleum engineering from the University of Southwestern Louisiana in 1971, and an MS in systems management from University of Southern California in 1975.

Bill has diverse experience in the upstream oil & gas industry. His experience includes various technical, management, and operations assignments. Bill served as an offshore installation manager for Mobil North Sea and spent the last 10 years working in the facility operability area.

He retired from Mobil in 2000, and from Hess in 2014. Bill specializes in finding nanotechnologies used in other industries and applying them to the upstream oil & gas industry. He sits on the Board of Advisors for a start-up nanotechnology company, Magna Imperio Systems, and offers consulting in field development planning, facility operability, and project support.

A registered PE in Texas and Louisiana, Bill holds memberships in the National Society of Professional Engineering, the Texas Professional Engineering Society, and the Society of Petroleum Engineers.

SPE-GCS REGISTRATION LINK: <http://www.spegcs.org/events/2015/10/projects-facilities-construction/>



SESSION 3

Tuesday
10.20.15

4:30 PM – 6:00 PM

SPEAKER

Bill Capdevielle, P.E.
President & Founder
Bill Capdevielle Enterprises LLC

LOCATION

Wood Group Mustang, Inc.
Stallion Building - Event Room
17325 Park Row
Houston, TX 77084

EVENT CONTACT

Bryan W. Marlborough
281-647-8385
bryan.marlbrough
@woodgroup.com

MEMBERS

\$35

NON-MEMBERS

\$45

STUDENTS

\$10

Build more production and assurance into your deepwater wells

By engineering our SCALEGUARD® proppant-delivered scale inhibiting technology with KRYPTOSPHERE® HD ultra conductive, high-density ceramic proppant as the substrate, CARBO has created a unique technology ideally suited to Gulf of Mexico Lower Tertiary development.

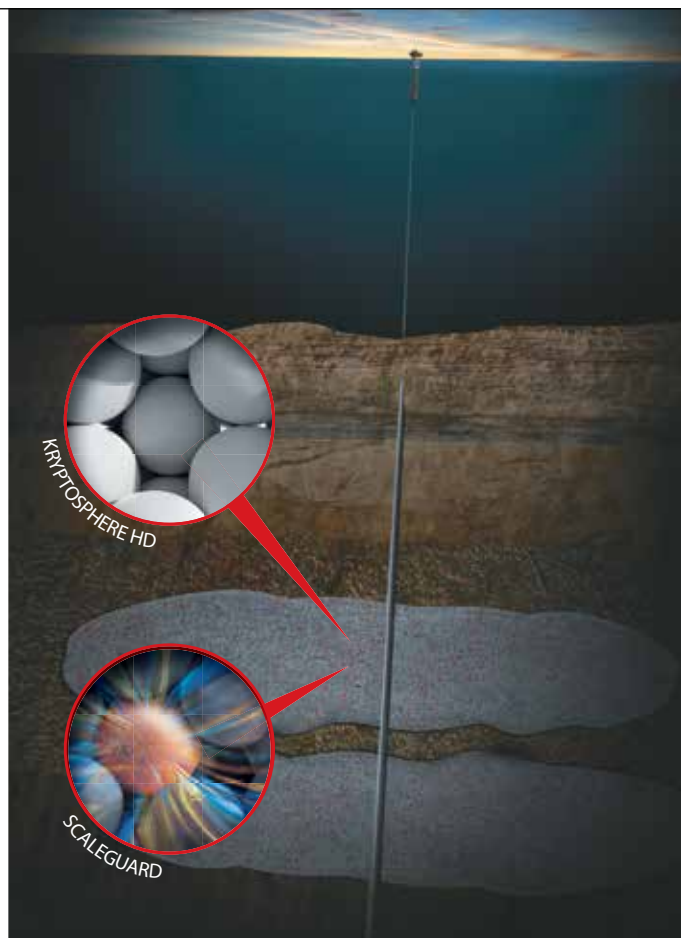
The tailored technology provides the highest level of long-term conductivity and maintains fracture integrity under cyclic loading in ultra-high closure stress formations, together with long-term protection from scale throughout the entire production network.

Build enhanced production, reduced lifetime cost and less risk into your next deepwater Gulf of Mexico well with CARBO.

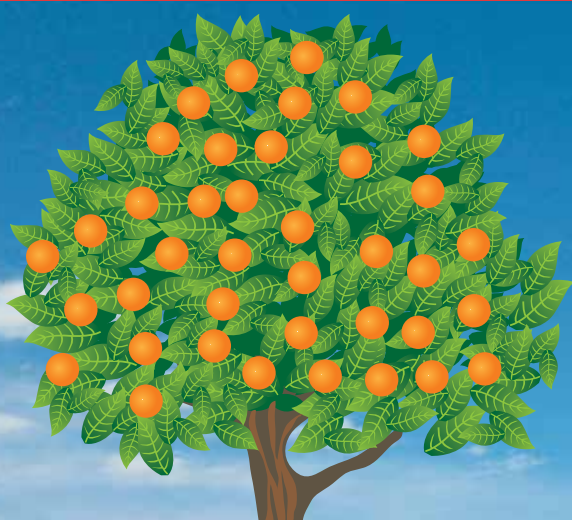
CARBO

Production. Enhanced.

carboceramics.com



ORANGE IS THE NEW GREEN



Flotek's citrus-based, environmentally friendly **CnF®** fracturing additives will revolutionize the way the world thinks about fracturing and will improve your production.

FLOTEK

For more information contact
cesimkt@flotekind.com
 or call
 832-308-CESI (2374)

PATENTED proNova™ by TDE

DRILLING PERFORMANCE

Drilling Tracking Report

Category	Value	Unit	Target
Drilling Rate	100	ft/hr	100
Drilling Cost	100	\$/ft	100
Drilling Time	100	hrs	100
Drilling Depth	100	ft	100
Drilling Volume	100	cu ft	100
Drilling Pressure	100	psi	100
Drilling Temperature	100	°F	100
Drilling Vibration	100	g	100
Drilling Torque	100	ft-lb	100
Drilling Rotation	100	rpm	100
Drilling Feed	100	in/rev	100
Drilling Chip Load	100	in/rev	100
Drilling Surface Finish	100	in/rev	100
Drilling Tool Wear	100	in/rev	100
Drilling Tool Life	100	hrs	100
Drilling Tool Cost	100	\$/hr	100
Drilling Tool Efficiency	100	%	100
Drilling Tool Reliability	100	%	100
Drilling Tool Availability	100	%	100
Drilling Tool Maintenance	100	hrs	100
Drilling Tool Replacement	100	hrs	100
Drilling Tool Disposal	100	hrs	100
Drilling Tool Recycling	100	hrs	100
Drilling Tool Reuse	100	hrs	100
Drilling Tool Repair	100	hrs	100
Drilling Tool Upgrade	100	hrs	100
Drilling Tool Optimization	100	hrs	100
Drilling Tool Innovation	100	hrs	100
Drilling Tool Research	100	hrs	100
Drilling Tool Development	100	hrs	100
Drilling Tool Testing	100	hrs	100
Drilling Tool Validation	100	hrs	100
Drilling Tool Certification	100	hrs	100
Drilling Tool Registration	100	hrs	100
Drilling Tool Marking	100	hrs	100
Drilling Tool Labeling	100	hrs	100
Drilling Tool Packaging	100	hrs	100
Drilling Tool Distribution	100	hrs	100
Drilling Tool Sales	100	hrs	100
Drilling Tool Support	100	hrs	100
Drilling Tool Training	100	hrs	100
Drilling Tool Documentation	100	hrs	100
Drilling Tool Compliance	100	hrs	100
Drilling Tool Security	100	hrs	100
Drilling Tool Privacy	100	hrs	100
Drilling Tool Accessibility	100	hrs	100
Drilling Tool Portability	100	hrs	100
Drilling Tool Scalability	100	hrs	100
Drilling Tool Interoperability	100	hrs	100
Drilling Tool Compatibility	100	hrs	100
Drilling Tool Reliability	100	hrs	100
Drilling Tool Availability	100	hrs	100
Drilling Tool Usability	100	hrs	100
Drilling Tool Learnability	100	hrs	100
Drilling Tool Interactability	100	hrs	100
Drilling Tool Collaborability	100	hrs	100
Drilling Tool Shareability	100	hrs	100
Drilling Tool Transferability	100	hrs	100
Drilling Tool Reusability	100	hrs	100
Drilling Tool Disposability	100	hrs	100
Drilling Tool Recyclability	100	hrs	100
Drilling Tool Repairability	100	hrs	100
Drilling Tool Upgradability	100	hrs	100
Drilling Tool Optimizability	100	hrs	100
Drilling Tool Innovativeness	100	hrs	100
Drilling Tool Researchability	100	hrs	100
Drilling Tool Developability	100	hrs	100
Drilling Tool Testability	100	hrs	100
Drilling Tool Validity	100	hrs	100
Drilling Tool Certifiability	100	hrs	100
Drilling Tool Registrability	100	hrs	100
Drilling Tool Markability	100	hrs	100
Drilling Tool Labelability	100	hrs	100
Drilling Tool Packability	100	hrs	100
Drilling Tool Distributability	100	hrs	100
Drilling Tool Sellability	100	hrs	100
Drilling Tool Supportability	100	hrs	100
Drilling Tool Trainability	100	hrs	100
Drilling Tool Documentability	100	hrs	100
Drilling Tool Complianceability	100	hrs	100
Drilling Tool Securityability	100	hrs	100
Drilling Tool Privacyability	100	hrs	100
Drilling Tool Accessibilityability	100	hrs	100
Drilling Tool Portabilityability	100	hrs	100
Drilling Tool Scalabilityability	100	hrs	100
Drilling Tool Interoperabilityability	100	hrs	100
Drilling Tool Compatibilityability	100	hrs	100
Drilling Tool Reliabilityability	100	hrs	100
Drilling Tool Availabilityability	100	hrs	100
Drilling Tool Usabilityability	100	hrs	100
Drilling Tool Learnabilityability	100	hrs	100
Drilling Tool Interactabilityability	100	hrs	100
Drilling Tool Collaborabilityability	100	hrs	100
Drilling Tool Shareabilityability	100	hrs	100
Drilling Tool Transferabilityability	100	hrs	100
Drilling Tool Reusabilityability	100	hrs	100
Drilling Tool Disposabilityability	100	hrs	100
Drilling Tool Recyclabilityability	100	hrs	100
Drilling Tool Repairabilityability	100	hrs	100
Drilling Tool Upgradabilityability	100	hrs	100
Drilling Tool Optimizabilityability	100	hrs	100
Drilling Tool Innovativenessability	100	hrs	100
Drilling Tool Researchabilityability	100	hrs	100
Drilling Tool Developabilityability	100	hrs	100
Drilling Tool Testabilityability	100	hrs	100
Drilling Tool Validityability	100	hrs	100
Drilling Tool Certifiabilityability	100	hrs	100
Drilling Tool Registrabilityability	100	hrs	100
Drilling Tool Markabilityability	100	hrs	100
Drilling Tool Labelabilityability	100	hrs	100
Drilling Tool Packabilityability	100	hrs	100
Drilling Tool Distributabilityability	100	hrs	100
Drilling Tool Sellabilityability	100	hrs	100
Drilling Tool Supportabilityability	100	hrs	100
Drilling Tool Trainabilityability	100	hrs	100
Drilling Tool Documentabilityability	100	hrs	100
Drilling Tool Complianceabilityability	100	hrs	100
Drilling Tool Securityabilityability	100	hrs	100
Drilling Tool Privacyabilityability	100	hrs	100
Drilling Tool Accessibilityabilityability	100	hrs	100
Drilling Tool Portabilityabilityability	100	hrs	100
Drilling Tool Scalabilityabilityability	100	hrs	100
Drilling Tool Interoperabilityabilityability	100	hrs	100
Drilling Tool Compatibilityabilityability	100	hrs	100
Drilling Tool Reliabilityabilityability	100	hrs	100
Drilling Tool Availabilityabilityability	100	hrs	100
Drilling Tool Usabilityabilityability	100	hrs	100
Drilling Tool Learnabilityabilityability	100	hrs	100
Drilling Tool Interactabilityabilityability	100	hrs	100
Drilling Tool Collaborabilityabilityability	100	hrs	100
Drilling Tool Shareabilityabilityability	100	hrs	100
Drilling Tool Transferabilityabilityability	100	hrs	100
Drilling Tool Reusabilityabilityability	100	hrs	100
Drilling Tool Disposabilityabilityability	100	hrs	100
Drilling Tool Recyclabilityabilityability	100	hrs	100
Drilling Tool Repairabilityabilityability	100	hrs	100
Drilling Tool Upgradabilityabilityability	100	hrs	100
Drilling Tool Optimizabilityabilityability	100	hrs	100
Drilling Tool Innovativenessabilityability	100	hrs	100
Drilling Tool Researchabilityabilityability	100	hrs	100
Drilling Tool Developabilityabilityability	100	hrs	100
Drilling Tool Testabilityabilityability	100	hrs	100
Drilling Tool Validityabilityability	100	hrs	100
Drilling Tool Certifiabilityabilityability	100	hrs	100
Drilling Tool Registrabilityabilityability	100	hrs	100
Drilling Tool Markabilityabilityability	100	hrs	100
Drilling Tool Labelabilityabilityability	100	hrs	100
Drilling Tool Packabilityabilityability	100	hrs	100
Drilling Tool Distributabilityabilityability	100	hrs	100
Drilling Tool Sellabilityabilityability	100	hrs	100
Drilling Tool Supportabilityabilityability	100	hrs	100
Drilling Tool Trainabilityabilityability	100	hrs	100
Drilling Tool Documentabilityabilityability	100	hrs	100
Drilling Tool Complianceabilityabilityability	100	hrs	100
Drilling Tool Securityabilityabilityability	100	hrs	100
Drilling Tool Privacyabilityabilityability	100	hrs	100
Drilling Tool Accessibilityabilityabilityability	100	hrs	100
Drilling Tool Portabilityabilityabilityability	100	hrs	100
Drilling Tool Scalabilityabilityabilityability	100	hrs	100
Drilling Tool Interoperabilityabilityabilityability	100	hrs	100
Drilling Tool Compatibilityabilityabilityability	100	hrs	100
Drilling Tool Reliabilityabilityabilityability	100	hrs	100
Drilling Tool Availabilityabilityabilityability	100	hrs	100
Drilling Tool Usabilityabilityabilityability	100	hrs	100
Drilling Tool Learnabilityabilityabilityability	100	hrs	100
Drilling Tool Interactabilityabilityabilityability	100	hrs	100
Drilling Tool Collaborabilityabilityabilityability	100	hrs	100
Drilling Tool Shareabilityabilityabilityability	100	hrs	100
Drilling Tool Transferabilityabilityabilityability	100	hrs	100
Drilling Tool Reusabilityabilityabilityability	100	hrs	100
Drilling Tool Disposabilityabilityabilityability	100	hrs	100
Drilling Tool Recyclabilityabilityabilityability	100	hrs	100
Drilling Tool Repairabilityabilityabilityability	100	hrs	100
Drilling Tool Upgradabilityabilityabilityability	100	hrs	100
Drilling Tool Optimizabilityabilityabilityability	100	hrs	100
Drilling Tool Innovativenessabilityabilityability	100	hrs	100
Drilling Tool Researchabilityabilityabilityability	100	hrs	100
Drilling Tool Developabilityabilityabilityability	100	hrs	100
Drilling Tool Testabilityabilityabilityability	100	hrs	100
Drilling Tool Validityabilityabilityability	100	hrs	100
Drilling Tool Certifiabilityabilityabilityability	100	hrs	100
Drilling Tool Registrabilityabilityabilityability	100	hrs	100
Drilling Tool Markabilityabilityabilityability	100	hrs	100
Drilling Tool Labelabilityabilityabilityability	100	hrs	100
Drilling Tool Packabilityabilityabilityability	100	hrs	100
Drilling Tool Distributabilityabilityabilityability	100	hrs	100
Drilling Tool Sellabilityabilityabilityability	100	hrs	100
Drilling Tool Supportabilityabilityabilityability	100	hrs	100
Drilling Tool Trainabilityabilityabilityability	100	hrs	100
Drilling Tool Documentabilityabilityabilityability	100	hrs	100
Drilling Tool Complianceabilityabilityabilityability	100	hrs	100
Drilling Tool Securityabilityabilityabilityability	100	hrs	100
Drilling Tool Privacyabilityabilityabilityability	100	hrs	100
Drilling Tool Accessibilityabilityabilityabilityability	100	hrs	100
Drilling Tool Portabilityabilityabilityabilityability	100	hrs	100
Drilling Tool Scalabilityabilityabilityabilityability	100	hrs	100
Drilling Tool Interoperabilityabilityabilityabilityability	100	hrs	100
Drilling Tool Compatibilityabilityabilityabilityability	100	hrs	100
Drilling Tool Reliabilityabilityabilityabilityability	100	hrs	100
Drilling Tool Availabilityabilityabilityabilityability	100	hrs	100
Drilling Tool Usabilityabilityabilityabilityability	100	hrs	100
Drilling Tool Learnabilityabilityabilityabilityability	100	hrs	100
Drilling Tool Interactabilityabilityabilityabilityability	100	hrs	100
Drilling Tool Collaborabilityabilityabilityabilityability	100	hrs	100
Drilling Tool Shareabilityabilityabilityabilityability	100	hrs	100
Drilling Tool Transferabilityabilityabilityabilityability	100	hrs	100
Drilling Tool Reusabilityabilityabilityabilityability	100	hrs	100
Drilling Tool Disposabilityabilityabilityabilityability	100	hrs	100
Drilling Tool Recyclabilityabilityabilityabilityability	100	hrs	100
Drilling Tool Repairabilityabilityabilityabilityability	100	hrs	100
Drilling Tool Upgradabilityabilityabilityabilityability	100	hrs	100
Drilling Tool Optimizabilityabilityabilityabilityability	100	hrs	100
Drilling Tool Innovativenessabilityabilityabilityability	100	hrs	100
Drilling Tool Researchabilityabilityabilityabilityability	100	hrs	100
Drilling Tool Developabilityabilityabilityabilityability	100	hrs	100
Drilling Tool Testabilityabilityabilityabilityability	100	hrs	100
Drilling Tool Validityabilityabilityabilityability	100	hrs	100
Drilling Tool Certifiabilityabilityabilityabilityability	100	hrs	100
Drilling Tool Registrabilityabilityabilityabilityability	100	hrs	100
Drilling Tool Markabilityabilityabilityabilityability	100	hrs	100
Drilling Tool Labelabilityabilityabilityabilityability	100	hrs	100
Drilling Tool Packabilityabilityabilityabilityability	100	hrs	100
Drilling Tool Distributabilityabilityabilityabilityability	100	hrs	100
Drilling Tool Sellabilityabilityabilityabilityability	100	hrs	100
Drilling Tool Supportabilityabilityabilityabilityability	100	hrs	100
Drilling Tool Trainabilityabilityabilityabilityability	100	hrs	100
Drilling Tool Documentabilityabilityabilityabilityability	100	hrs	100
Drilling Tool Complianceabilityabilityabilityabilityability	100	hrs	100
Drilling Tool Securityabilityabilityabilityabilityability	100	hrs	100
Drilling Tool Privacyabilityabilityabilityabilityability	100	hrs	100
Drilling Tool Accessibilityabilityabilityabilityabilityability	100	hrs	100
Drilling Tool Portabilityabilityabilityabilityabilityability	100	hrs	100
Drilling Tool Scalabilityabilityabilityabilityabilityability	100	hrs	100
Drilling Tool Interoperabilityabilityabilityabilityabilityability	100	hrs	100
Drilling Tool Compatibilityabilityabilityabilityabilityability	100	hrs	100
Drilling Tool Reliabilityabilityabilityabilityabilityability	100	hrs	100
Drilling Tool Availabilityabilityabilityabilityabilityability	100	hrs	100
Drilling Tool Usabilityabilityabilityabilityabilityability	100	hrs	100
Drilling Tool Learnabilityabilityabilityabilityabilityability	100	hrs	100
Drilling Tool Interactabilityabilityabilityabilityabilityability	100	hrs	100
Drilling Tool Collaborabilityabilityabilityabilityabilityability	100	hrs	100
Drilling Tool Shareabilityabilityabilityabilityabilityability	100	hrs	100
Drilling Tool Transferabilityabilityabilityabilityabilityability	100	hrs	100
Drilling Tool Reusabilityabilityabilityabilityabilityability	100	hrs	100
Drilling Tool Disposabilityabilityabilityabilityabilityability	100	hrs	100
Drilling Tool Recyclabilityabilityabilityabilityabilityability	100	hrs	100
Drilling Tool Repairabilityabilityabilityabilityabilityability	100	hrs	100
Drilling Tool Upgradabilityabilityabilityabilityabilityability	100	hrs	100
Drilling Tool Optimizabilityabilityabilityabilityabilityability	100	hrs	100
Drilling Tool Innovativenessabilityabilityabilityabilityability	100	hrs	100
Drilling Tool Researchabilityabilityabilityabilityabilityability	100	hrs	100
Drilling Tool Developabilityabilityabilityabilityabilityability	100	hrs	100
Drilling Tool Testabilityabilityabilityabilityabilityability	100	hrs	100
Drilling Tool Validityabilityabilityabilityabilityability	100	hrs	100
Drilling Tool			

WESTSIDE

Optimizing Completions in Horizontal Wells

Are unconventional reservoirs different than reservoirs we have worked with in the past? Do the created fractures propagate differently? Are the equations that govern production different than in conventional reservoirs? This presentation will focus on how unconventional reservoirs are just an extension of the same reservoirs we have completed using hydraulic fracturing over the past 67 years.

Yes, there are differences. Yes, the treatment optimization process is more complicated. It has been complicated by the fact that now we have both a fracture treatment optimization and a well density challenge involved in the completion of a single well.

This presentation will discuss the optimization process for horizontal wellbores, the geometry of created fractures in horizontal wells, and the fallacy of IP as an optimization parameter. The economic process of optimizing completions in unconventional horizontal wellbores will be presented. It will be demonstrated that this process can be performed in a timely manner, and the results from a few wells can lead to improved economics, efficient use of capital, and improved profitability.

STEPHEN SCHUBARTH



Stephen Schubarth is the president of Schubarth Inc., an oil and gas consulting company. He has been in the business of completing oil and gas wells for over 34 years. Steve has worked in numerous producing basins in the U.S. and internationally. He has worked for operators, pumping service companies, proppant manufacturers, and as a consultant along the way. He has authored/coauthored numerous

SPE papers and technical articles, most of which pertained to the optimization of completions through the use of hydraulic fracturing. Steve has BS and MS degrees in petroleum engineering from Texas A&M.



EVENT INFO

Wednesday
10.21.15

11:30 AM – 1:00 PM

SPEAKER

Stephen Schubarth
President
Schubarth Inc.

LOCATION

Norris Center – Westchase
9990 Richmond Ave., Ste. 102
Houston, TX 77042

EVENT CONTACT

Stephen Loving
713-328-2244
stephen.lovings@corelab.com

MEMBERS

\$40

NON-MEMBERS

\$45



OTC BRASIL 2015

AN EVENT ORGANIZED BY IBP AND OTC

OTC BRASIL attracts the world's foremost experts and companies to share knowledge and explore the latest offshore energy technologies!

27-29 October 2015

THE ATLANTIC: FROM EAST TO WEST—AN OCEAN OF INNOVATION

Riocentro Exhibition and Convention Center | Rio de Janeiro, Brazil

REGISTRATION NOW OPEN! | go.otcbrasil.org/regOTCBrazil



Join Us

Maximizing Well Performance

It's All in the Resin.

- Maximizing Oil Production
- Maximizing the Reduction of Produced Water
- Maximizing Proppant Consolidation at Ultra-Low Temperatures



E-mail us at oilfield@hexion.com.



Cardno PPI SEMS Compliance Services

- > Consultants and Clerks
- > Customized Documents
- > Software Solutions



920 Memorial City Way, Suite 900, Houston, TX 77024
Phone 713 464 2200 Email usoilandgas@cardno.com
www.cardnoppi.com



VIKING ENGINEERING, L.C.

- PETROLEUM CONSULTING
- HPHT WELL DESIGN
- APB ANALYSIS
- PROJECT MANAGEMENT
- FAILURE ANALYSIS
- TRAINING

CRITICAL WELL ENGINEERING CONSULTING SERVICES

VIKING'S TEAM OF HIGHLY TRAINED PETROLEUM PROFESSIONALS LEND THEIR EXPERIENCE TO CREATIVE WELL DESIGNS.

WE CAN HELP PLAN AND EXECUTE YOUR TOUGH WELLS.

VISIT OUR WEBSITE: WWW.VIKINGENG.NET
OR CALL: (281) 870-8455 IN HOUSTON

Integrated Energy Services, Inc.

Robert Barba
Petrophysicist

Log Analysis
Completion Optimization

500 N. Capital of TX Hwy
Building 4-150
Austin, TX 78746
C: (713) 823-8602
F: (713) 583-9400
RBarba75@gmail.com

www.integrated-energy-services.com

RESERVOIR

Practical Aspects of Reservoir Management and Production Optimization

The goal of optimizing production and reservoir optimization is about increasing recovery efficiency and production rate while reducing operating expenses and capital expenditures in a prudent way. Improving reservoir description, surveillance and analysis, and optimizing production performance during any stage of the primary and IOR/EOR processes increase recovery efficiency.

Reservoir management (RM) is a comprehensive and integrated strategy for appraising, delineating, developing, producing, monitoring and optimizing recovery and production from a reservoir, and it is a key to achieving optimization. The formulation of a depletion or development plan is an integral part of RM. Although the process of RM is dynamic, the development plan is based on a solid foundation, and it is orchestrated judiciously considering: (a) reservoir description, (b) reservoir performance, (c) recovery methods employed – natural or improved (d) wells and facilities requirements, (e) environmental and safety considerations, and (f) economic and decision analysis.

Optimizing production rates and recovery efficiency simultaneously is becoming a new “mantra” in today’s world. More detailed understandings of reservoir characterization, EOR processes, selective injection and conformance control, reservoir physics, and designer wells are helping EOR to succeed in our industry.

GANESH THAKUR



Dr. Ganesh Thakur is currently the President and Global Advisor for Thakur Services, Inc. Until June 2014, he served as Vice President, Global Advisor and Fellow of Chevron Energy Technology Company. In this role, he provided technical advice and consultation on high impact offshore, onshore, heavy oil, and unconventional reservoirs. He is well known for the emergence of reservoir management (RM) —in particular waterflooding—as a key interdisciplinary practice. Dr. Thakur

served as the 2012 President of Society of Petroleum Engineering (SPE) International. He is an SPE Distinguished Member, and has served as Technical Director – Reservoir for the Board of Directors, and SPE Distinguished Lecturer. Dr. Thakur has authored over 60 technical articles and presented over 250 lectures/short courses around the world. He earned a B.S. (Honors) degree with first rank in petroleum engineering from Indian School of Mines and MS and PhD degrees in petroleum and natural gas engineering plus an MA degree in mathematics from Pennsylvania State University. In addition, he earned an executive MBA degree from Houston Baptist University.



EVENT INFO

Thursday
10.22.15

11:30 AM – 1:00 PM

SPEAKER

Dr. Ganesh Thakur
President and Global Advisor
Thakur Services, Inc.
Reservoir Consulting

LOCATION

Sullivan’s Steakhouse
4608 Westheimer Rd.
Houston, TX 77027

EVENT CONTACT

Alexsandra Martinez
956-249-0994
adinorah.martinez@gmail.com

MEMBERS

\$35

NON-MEMBERS

\$40

DO YOU WANT TO GET YOUR BUSINESS IN FRONT OF 16,000 OF THE MOST INFLUENTIAL PETROLEUM ENGINEERS AND OIL AND GAS PROFESSIONALS EVERY MONTH, 12 TIMES A YEAR?

Advertise in the SPE-GCS Connect Newsletter and enjoy competitive rates while placing your services at the fore front of your targeted audience.

Our colorful, glossy, high-quality publication is envied by SPE sections around the world! Our flexible options allow you to choose from ad sizes based on your needs and budget.

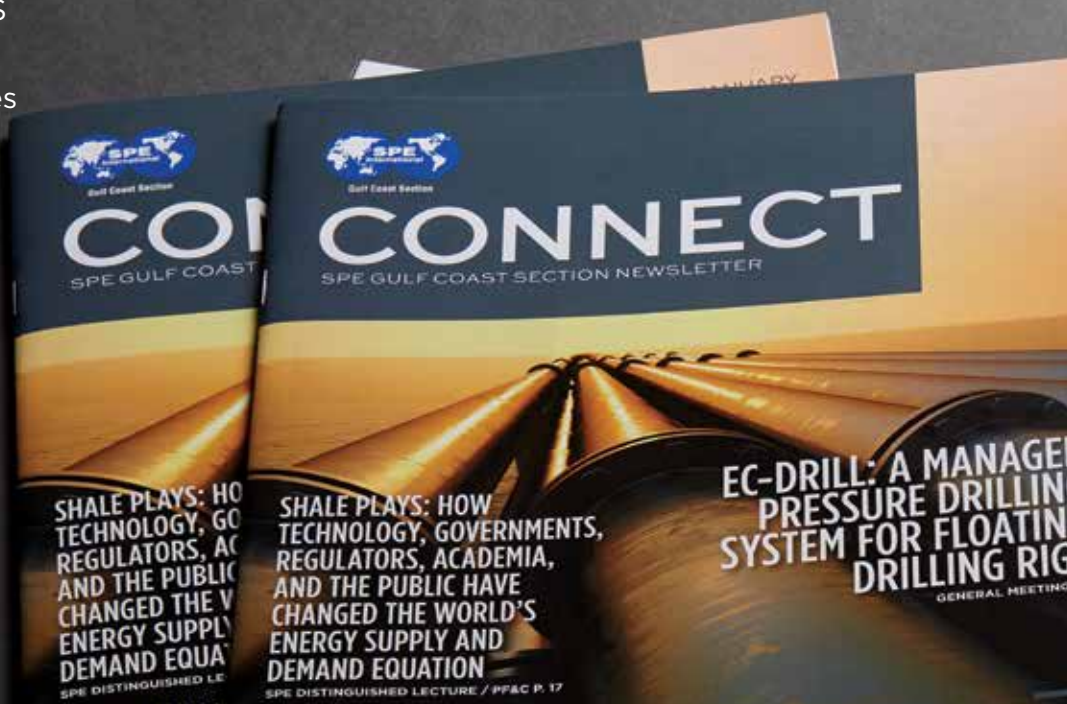
FOR MORE INFO CONTACT

Pat Stone

Star- Lite Printing, Inc.

281-530-9711

Starlite1@sbcglobal.net



ELY

Global Hydraulic Fracturing Expertise

281-530-4643

www.elytrac.com

ARMSTRONG ASSOCIATES

OVER 25 YEARS
SERVING ENERGY PROFESSIONALS

CONTRACT REVIEW / NEGOTIATION
EMPLOYMENT
NON-COMPETES
SEVERANCE
CIVIL RIGHTS LITIGATION
COMPETITIVE RATES

440 LOUISIANA STREET, SUITE 900
HOUSTON, TX
ARMSTRONGATLAW.COM

Rose & Associates

Courses Consulting Software

Unconventional Resource Valuation and Assessment Course
(3 to 5 days)

UCRA Software
To model, value and risk drilling in resource plays

www.roseassoc.com

WHAT MAKES TIW AN INNOVATOR?

IMAGINATION

Maximizing customer productivity.

- Liner Hanger Systems
- Expandable Systems
- Completion Systems
- Safety and Kelly Valves
- Window Cutting Products
- Rental Tools

Call: 713.729.2110 or log on at www.tiwoilttools.com

ENGINEERING INNOVATION WORLDWIDE

PROJECTS, FACILITIES & CONSTRUCTION

The Facilities Engineer of Tomorrow: Faster, Stronger, Smarter – and More Successful Too!

To be successful today, facilities engineers must be multi-disciplined and collaborative, and must possess good leadership skills. These qualities are perfectly matched to the characteristics of the millennials who will be taking on the challenges of major projects in the years ahead.

Project performance, never good, has not improved over the past 30 years, in spite of huge investments in PM processes, tools and organizations. The “facilities engineer of tomorrow” can change all that. This interactive presentation will challenge the attendee to define this future as it applies to them, and to gain a vision of the skills they can develop to be prepared for the exciting challenges ahead.

RICHARD (DICK) WESTNEY, PE, PMP



Dick founded Westney Consulting Group in 1978 after having managed international exploration & production and refining & petrochemical projects for Exxon. A Houston-based international consulting firm, Westney Consulting Group works with owners and contractors on project risk management, strategic planning and improving organizational effectiveness.

Widely recognized as a thought leader in project and risk management, he is the author/co-author of five books, the most recent being *Risk Navigation Strategies for Major Projects – Beyond the Myth of Predictability*. He has served as visiting faculty for executive programs at the University of Texas, Texas A&M University, the University of Houston, Rice University, the Norwegian University of Science and Technology, and Moscow School of Management.

A popular speaker at major industry conferences, Dick currently serves on the Program Committee for the Global FPSO Conference, the Executive Advisory Board of the Engineering and Construction Contracting Association (ECC), the Program Committee for the Offshore Technology Conference (OTC), and on the Board of the Rice University Global Engineering & Construction Forum. A Fellow and Past-President of the Association for the Advancement of Cost Engineering (AACE International), he received AACE's highest honor, the Award of Merit.

A licensed professional engineer and certified project management professional, Dick is a graduate of the City College of New York (BS Engineering), Rensselaer Polytechnic Institute (MS Management Science), and Harvard Business School.

SPE-GCS REGISTRATION LINK: <http://www.spegcs.org/events/2015/10/projects-facilities-construction/>



SESSION 4

Tuesday
10.27.15

4:30 PM – 6:00 PM

SPEAKER

Richard (Dick) Westney, PE, PMP
Founder/Director
Westney Consulting Group, Inc

LOCATION

Wood Group Mustang, Inc.
Stallion Building - Event Room
17325 Park Row
Houston, TX 77084

EVENT CONTACT

Bryan W. Marlborough
281-647-8385
bryan.marlborough@woodgroup.com

MEMBERS

\$35

NON-MEMBERS

\$45

STUDENTS

\$10



EVENT INFO

Wednesday
10.28.15

11:30 AM – 1:00 PM

SPEAKER

Dave Cramer
Senior Engineering Fellow
ConocoPhillips

LOCATION

Greenspoint Club
16925 Northchase Dr.
Houston, TX 77060

EVENT CONTACT

Shree Krishna
919-413-9670
shreekrishna@gmail.com

MEMBERS

\$35

NON-MEMBERS

\$40

COMPLETIONS & PRODUCTION

A Critical Reexamination of DFIT Interpretation Methods

In this presentation, a new method is introduced for interpreting diagnostic fracture injection test (DFIT) data. The method is based on results from a three-dimensional hydraulic fracturing simulator (CFRAC) that allows fractures to retain aperture after mechanical closure. After closure, an empirical, non-linear joint closure law is used to relate fracture aperture and stiffness to the effective normal stress. Fracture closure increases fracture stiffness, which, in low permeability formations, causes an increase in the pressure derivative. The resulting pressure signal in a G-function analysis plot has often been incorrectly attributed to fracture height recession or closing of secondary transverse fractures, leading to a misidentification of closure pressure. Based on simulation results, best practices are offered for estimating closure pressure, which are validated with a series of numerical simulations and field examples.

The implications are important for hydraulic fracture modeling. Using the new methodology, all historical DFIT data in a major unconventional play were reexamined and fracture closure pressure for interpretable tests needed to be adjusted upward by about 600 psi on average. This finding made necessary a reexamination of pressure-history-calibrated fracture models in which closure pressure was derived from the prior DFIT analysis. Yet the revised-upward in-situ stress greatly diminished or eliminated the need to aggressively invoke arbitrary adjustment parameters such as process zone stress in model calibration efforts.

In addition to the discussion on fracture closure, a system of DFIT consistency checks will be introduced to assess the reliability and robustness of interpreted reservoir stress (σ_h), pore pressure (p_i) and fluid transmissibility (kh/μ). Field cases from various low permeability and unconventional reservoirs will be used to demonstrate key points.

DAVE CRAMER



Dave Cramer is a Senior Engineering Fellow on the ConocoPhillips Global Completions Engineering staff in Houston, TX. He has 38 years of experience in designing, executing and evaluating well stimulation treatments. Dave has authored 46 papers and is co-inventor of two US patents. Industry recognitions include the Henry Mattson Technical Achievement Award by the Denver SPE chapter in 1993 and the SPE International Completions Optimization and Technologies Award in 2011. He was an SPE Distinguished Lecturer from 2003-2004 and the SPE Region Director for the US and Canada Rocky Mountain region from 2004-2007. Dave is a registered Professional Engineer in Colorado.

BUSINESS DEVELOPMENT

Upstream Strategies for the Gulf of Mexico - 2015 and Beyond

WTI near \$40, Marcellus/Utica able to supply half the planet, Western Lease Sale at an all-time low...yet the Gulf of Mexico (deepwater and shelf) is the place to be! Great success always springs from great challenges. Please join us for a moderated panel discussion by a top group of experts covering the opportunities, challenges, and strategies that will lead companies through to success in the GOM both today and for many years to come. Who are the companies that are positioning themselves for the future? What are the technical advancements that will be key to success? How will companies adapt operationally during these lean times to position themselves for post 2015? What are the current focus areas and risk management strategies?

Please join us at the Four Seasons for this informative discussion. The popular format of a business & social networking hour, with complimentary hors d'oeuvres and a cash bar, followed by an hour and a half long program including a Q&A session, will begin at 5:00 pm in the mezzanine.

RON NEAL



Ron received his Bachelor's in Zoology (1974) and Master's in Geology (1977) from LSU. From 1977-1988 he worked for Amoco and Davis Petroleum. In March 1988, Ron and Billy Harrison co-founded Houston Energy, whose primary exploration focus is the deepwater Gulf of Mexico. Today, Houston Energy has 38 employees and is engaged in exploration through joint ventures it has created and manages, including three recent deepwater discoveries.

TIMOTHY S. DUNCAN



Tim Duncan is a founder of Talos Energy LLC, formed in March 2012, and initially funded by Apollo/Riverstone. Talos is engaged in the acquisition, exploration, development and production of properties along the Gulf Coast and GOM. Prior to Talos, Mr. Duncan was the Sr. VP BD of Phoenix Exploration and also worked in various positions for Gryphon Exploration, Amerada Hess, Zilkha, and Pennzoil. Mr. Duncan has a BS PE from Mississippi State and MBA from UH.

JACKSON SANDEEN



Jackson is a senior team member covering the US deepwater Gulf of Mexico upstream energy market for Wood Mackenzie, including oil and gas assets, E&P operators and regional trends. He has extensive experience with asset modelling and valuations for a variety of complex projects. Mr. Sandeen also works with the M&A team on farm-ins, portfolio divestments and corporate mergers.

SEASON PASS HOLDERS: You do not need to register for this event, as your Season Pass has automatically registered you for all 2015 - 2016 Business Development events. Thank you for being a Season Pass Holder!



EVENT INFO

Wednesday
10.28.15

5:00 PM - 7:30 PM

SPEAKERS

Ron Neal
Timothy S. Duncan
Jackson Sandeen

SPONSOR

Sponsor: Simmons & Co. Intl.

LOCATION

Four Seasons Hotel
1300 Lamar
Houston, TX 77010

EVENT CONTACT

Cody Felton
281-221-3042
Cody.Felton@energynet.com

MEMBERS

"\$40/\$50 Walk-In"

NON-MEMBERS

\$45/\$50 Walk-In

STUDENT/UNEMPLOYED

\$10

ProTechnics

KNOW WHERE PRODUCTION IS COMING FROM...

Maximize Production
+++ Increase Revenue

For more information on FlowProfiler, visit us at www.corelab.com/protechnics or call us at 713-328-2320

FLOW
PROFILER
OIL



Fluid Diagnostic Tracer

The industry's first comprehensive after-frac flow profile tracer technology that simultaneously evaluates both frac fluid clean-up and hydrocarbon production over time.

FLOWPROFILER provides critical information such as:

- Simultaneous Zonal Clean-Up & Production
- Hydrocarbon Production Indexed to Geologic Horizons
- Hydrocarbon Production Over Time
- Well Spacing Insights



Integrated Directional Drilling Services

Innovative
Directional Drilling
services centered around



High Performance Rigs

Unearth additional performance gains when you pair a rig with a downhole toolset - designed to work together. Learn more:

www.precisiondrilling.com/directional

- high quality people
- lower well costs and HSE risk
- higher quality wellbore



Precision
Directional Services

Committee: Auxiliary

EVENT INFO

FRIDAY

10.9.15

EVENT LOCATION

Steamboat House Restaurant
8045 North Sam Houston Parkway, West
Houston, TX 77064
832-912-1845

PROGRAM

The October meeting will be another informal lunch with no program and separate checks. Join us and bring a friend! Let one of us know if you plan to come so we know how many places to reserve.

EVENT CONTACTS

Evelyn Earlougher
281-419-1328
earlougher@comcast.net

Nancy Hill
281-435-1619
Nancyhill2444@sbcglobal.net

Energy Day 2015

SPE Gulf Coast Section will be exhibiting at Energy Day 2015 and we need representatives to volunteer!

Houston's largest annual FREE family festival showcasing science, technology, engineering and mathematics (STEM), Energy Day has nearly 70 interactive demonstrations and exhibits teaching students and their families about the various forms of energy, science, technology, efficiency, conservation, and careers in the energy industry. The exciting exhibits and interactions with energy experts help spark students' interest in science, technology, engineering and mathematics.

FOR MORE INFORMATION

www.energydayfestival.org

REGISTER TO VOLUNTEER

www.spegcs.org/events/register/2965/

EVENT INFO

SATURDAY

10.17.15

10:45 AM - 4:00 PM

EVENT LOCATION

Sam Houston Park
1000 Bagby St.
Houston, TX 77002

EVENT CONTACT

Billie Rae Gillas
713-337-8801

Volunteering at the Playworks: Junior Coach Leadership Program Kickoff

Young Professionals are looking for 10-15 volunteers to help explain and facilitate teambuilding games with young students and their families at the Playworks Junior Coaches kickoff event.

Playworks recruits 4th and 5th graders from our partner schools who might otherwise be disruptive, shy or physically unsure to participate in the Junior Coach Leadership Program. Throughout the school year, Playworks' school-based adult coaches mentor these students through after-school meetings and give them specific responsibilities during recess periods. The Junior Coaches help during their own recess as well as recess for younger students by 'running point' on games set up in the schoolyard. Play and sports introduce problems that need to be solved, providing Junior Coaches the opportunity to learn skills in cooperation, conflict resolution and appropriate communication. Playworks, along with its partner schools, has found that this peer leadership program improves self-esteem and communication skills, and provides students with the motivation to do well in class.

The kickoff event is Halloween-themed, and the students have been encouraged to explore their inner superhero by dressing up for the event! Volunteers will interact with the Junior Coaches and their families through the organized games, and will facilitate group discussions about your own superpowers, AKA leadership skills you use at work and in the community!

We will end the day with a trick or treat booth stocked with healthy snacks and prizes.

EVENT INFO

SATURDAY

10.10.15

9:00 AM - 11:30 AM

EVENT LOCATION

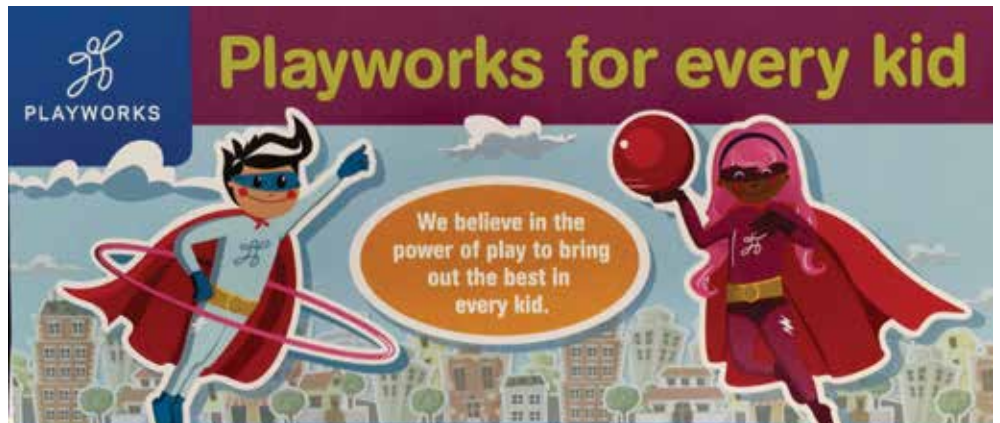
Horn Elementary
10734 Bissonnet St.
Houston, TX 77099

EVENT CONTACT

Catalina Leal
832-729-5462
catalina.leal@bakerhughes.com

REGISTER TO VOLUNTEER

<http://www.spegcs.org/events/3000/>



UNCONVENTIONAL BY DESIGN®



IMPROVE THE ECONOMICS OF YOUR NEW AND REFRACTURED WELLS

FTSI's NuFlo® system is a suite of degradable diverting agents with various particle sizes designed to temporarily block existing fractures, allowing new fractures to develop. The NuFlo® system is customizable for near wellbore and far-field applications to help you get the most out of your refrac and new well completions. Learn more at FTSI.COM



Unconventional by Design
866.877.1008 | FTSI.COM



**A LEADER IN
WELL COMPLETION**

DELIVERING GLOBAL SOLUTIONS FOR E&P CHALLENGES

- Drilling & Completion
- Well Control
- Reservoir & Production



**SIERRA
HAMILTON**

+1.713.956.0956 • Sierra-Hamilton.com

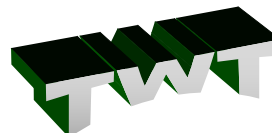
2015 PROFESSIONAL ENGINEERING EXAM RESULTS FOR PETROLEUM ENGINEERING

First Timers 71% Second+ Timers 3%
National Average Pass Rate 57%

PE Exam Application Deadline Date: October 1, 2015
Next Petroleum PE Exam Date: October 30, 2015

2015 HOUSTON COURSES
October 24 – 28 // OCTOBER 5 – 9

P: 405-822-6761 | E: bingwines@cox.net
winrockengineeringinc.com



The Wells Team LLC.
Deep Water Engineers

Providing Services in:

*Well Planning
Wellbore Certifications
Consulting*

979-479-5778 713-825-9544
A Registered Engineering Firm 13155

SPE-GCS Oil Patch Orientation

A very popular SPE program, the Oil Patch Orientation course is designed as a non-technical audio-visual guided tour through the oil patch, illustrating the basic equipment and techniques used in the discovery, development and production of petroleum.

OUTLINE

- Introduction/outline of the day
- The economics & future of the petroleum industry
- Theory of the origins of hydrocarbons
- Reservoir parameters (eg: porosity/permeability)
- Geology of petroleum & geophysics
- Drilling basics
- Well logging
- Well completions
- Reservoir drive mechanisms
- Production equipment (sub-surface & surface)
- Midstream & downstream topics

JOHN FARINA provides petroleum engineering consulting and technical training services to the international and domestic petroleum industry. He has over 30 years of experience in production and reservoir engineering. John has a BS in Petroleum Engineering from West Virginia University, and has previously worked for Shell Oil and Sneider and Merkel Associates.

RON HINN is a Vice President of PetroSkills, a worldwide leader in training and development of E&P Technical Professionals. He specializes in knowledge management, competency development and technical training. Ron has held various supervisory, consulting and engineering positions with Oxy, Altura Energy, Amoco and Mobil.

SUSAN HOWES is an Organizational Capability Consultant in the Reservoir Management department at Chevron, with prior assignments as a Reservoir Management Consultant, and as Manager of the Horizons Program. She is a Petroleum Engineering graduate of the University of Texas and is a Past President of the Chevron Women's Network.

KEN ARNOLD is a Senior Technical Advisor at WorleyParsons with 50 years of experience in projects, facilities and construction related to upstream oil and gas developments. He spent 16 years at Shell in engineering and engineering research management. Ken formed Paragon Engineering Services in 1980, which had a staff of 600 when it was acquired by AMEC in 2005.

MARTY STETZER leads EKT Interactive, Inc. in Houston, an e-training company specializing in design and delivery of large-scale customized safety and technical content training programs. His career included 18 years of P&L experience with Schlumberger, Superior Oil-Mobil, Wilson Industries and Exxon in a variety of USA and international assignments.

DR. TERRY N. GARDNER is a mechanical engineer who spent over 35 years with Exxon and BP working to advance deepwater technology. He led research on deepwater riser VIV; development of a high-current Riser Centralizer System, which was installed in the GoM; development of one of the earliest TLPs, which was installed in the Norwegian North Sea; and numerous riser and production platform innovations for deepwater.

EVENT INFO

TUESDAY

10.20.15

8:30 AM – 5:30 PM

EVENT LOCATION

SPE Houston Training Center
10777 Westheimer Suite 1075
Houston, TX 77042

EVENT CONTACT

Sunil Lakshminarayanan
832-627-3470

PRICE

\$350

Registration ends 10.19.15

No refunds one week prior to the event

SPEAKERS

John Farina
Ron Hinn
Susan Howes
Ken Arnold
Marty Stetzer
Dr. Terry N. Gardner

2015-2016 SPE-GCS SPONSORSHIP OPPORTUNITY

The 2015-2016 program year for SPE Gulf Coast Section (SPE-GCS) has started, and a new opportunity to sponsor the SPE-GCS is available this year!

Proceeds from sponsorships will benefit the SPE-GCS Scholarship Fund, which has awarded more than \$3 million in scholarships since 1963 to local engineering students. Please consider investing in this important SPE-GCS program so that we can continue to support our aspiring oil and gas professionals

Platinum \$50,000

- Sponsorship of SPE-GCS newsletter, GCS Connect (3/4 year-company name, no logo on front cover)
 - A four-year SPE-GCS scholarship presented in your company name
- Sponsored table at annual Awards Banquet – 4 attendees from your company to sit with 2 scholarship winners and their parents
 - SPE-GCS website advertisement (www.SPEGCS.org) – full year
 - Verbal recognition of sponsorship at 2 key meetings (TBD)
 - 3 gratis slots at two different study group meetings
 - 1 speaking opportunity at a study group or SPE-GCS event (TBD)
- Sponsorship of Casino Night (4 tickets) or Oilfield Simulation competition (train 4 young professionals/1 team) and one team at the Tennis, Golf or Sporting Clays Tournament (1 team or 4 people)

Gold \$30,000

- Sponsorship of SPE-GCS newsletter, GCS Connect (1/4 year-company name, no logo on front cover)
 - Sponsored table at annual Awards Banquet – 4 attendees from your company to sit with 2 scholarship winners and their parents
 - SPE-GCS website advertisement (www.SPEGCS.org) – 6 months
 - Verbal recognition of sponsorship at one key meeting (TBD)
 - 2 gratis slots at two different study group meetings
- Sponsorship of Casino Night (4 tickets) or Oilfield Simulation competition (train 4 young professionals/1 team) or one team at the Golf, Tennis or Sporting Clays Tournament (1 team or 4 people)

Silver \$15,000

- SPE-GCS website advertisement (www.SPEGCS.org) – 3 months
- Verbal recognition of sponsorship at a key meeting (TBD)
 - 2 gratis slots at one study group meeting
- Sponsorship of Casino Night (2 tickets) or Oilfield Simulation competition (train 4 young professionals/1 team)

SPE-GCS SPONSORSHIP CONTACTS

John Vozniak
SPE-GCS Sponsorship Chair
jvozniak@mac.com

Ivor Ellul
SPE-GCS Chair
iellul@ciskventures.com

INFORMATION/REGISTRATION

spegcs.org/sponsorship-opportunity/

The Career Cruise: Navigating Your Career in Uncharted Waters

Attend the “Career Cruise” and discover how to achieve your goals and maintain your values on a journey with no certain destination, unclear schedules, and hidden obstacles blocking your way.

The oil and gas industry is a tremendous global career opportunity for all that embark on a career with the right plan, flexible mindset, and a little “self-made” luck. With the recent downturn, possibly the first in many young professionals’ careers, are there some key insights and actions that will help you navigate the challenges successfully? The discussion will focus on:

- The transition from university and critical decisions in the first few years of your career.
- Balancing building depth vs breadth and trying to juggle dual careers and family responsibilities.
- Engineering talent, business acumen, people skills – how important and when?
- Career management – who owns it and what if my supervisor doesn’t care?
- Company culture, the challenges of fitting in, and keeping your individuality / values.

Kevin will offer his perspective using his personal career experiences to provide key principles and insight.

All professionals are welcome to attend this event.

KEVIN LACY



Mr. Lacy joined PetroSkills in September 2014 and is responsible for leading and building the PetroSkills technical staff organization into the petroleum industry’s leading source of technical subject matter expertise.

Mr. Lacy has spent nearly 35 years as a technical professional in the petroleum industry, serving in positions in the U.S. and around the world. Most recently, Mr. Lacy was Vice President for Global Drilling and Completions for Talisman. Prior to that role, from July 2006 until December 2009, he was Vice President for Gulf of Mexico Drilling and Completions for BP, and a head of the BP Drilling and Completions discipline. He was also Vice President, Global Drilling and Completions for Chevron. Mr. Lacy built his credentials and experience through holding a number of technical and business roles in Chevron’s international subsidiaries and in the US over a period of 26 years. He has a BS in Petroleum Engineering from the University of Tulsa, and a MBA from the University of California at Berkeley. In his professional career, he has traveled to over 55 countries, conducted business in 15 countries and lived on four different continents.

EVENT INFO

TUESDAY

10.20.15

11:00 AM – 1:00 PM

EVENT LOCATION

The Wedge International Tower
39th Floor
1415 Louisiana Street
Houston, TX 77002

SPEAKER

Kevin Lacy
Executive Vice President -
Technical Staff
PetroSkills

EVENT CONTACTS

Sahil Malhotra
sahil.malhotra@chevron.com

Julia Carval
julia.carval@us.bureauveritas.com

Arash Shadravan
shadravan.arash@gmail.com
832-854-7885

MEMBERS

\$20

NON-MEMBERS

\$30

Measure oil and gas stage flow... optimize future well development.

A Tracer Production Log™ gives continuous data to help plan your next well:

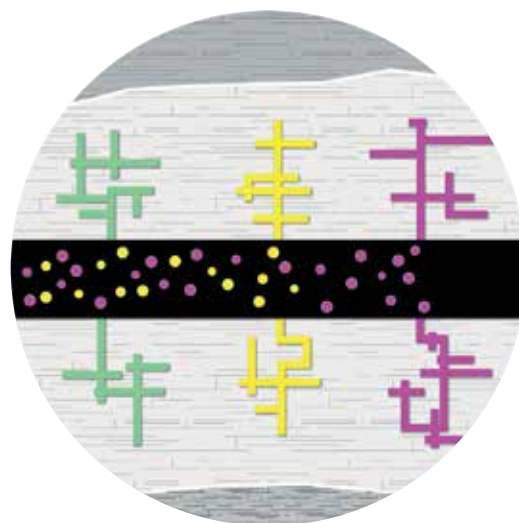
- Clean out efficiency
- Compare geology with oil and gas productivity
- Assess stimulation design effectiveness
- Well trajectory and spacing optimization

Frac smart, recover more with Tracerco technologies

To learn more about our local field and lab capabilities contact:

4106 New West Drive, Pasadena, TX 77507, USA

Tel: +1 281-291-7769 | Fax: +1 281-291-7709 | www.tracerco.com/reservoir-characterisation



PetroSkills®

To maximize convenience, PetroSkills will deliver our most popular courses multiple times in Houston in 2016, but there is still time to enroll before the end of the year...

Enroll soon to ensure your seat!



- **Basic Petroleum Engineering Practices – BE:**
November 16-20, December 14-18
- **Production Operations 1 – P01:**
December 7-18
- **Applied Reservoir Engineering – RE:**
November 9-20, December 7-18
- **Completions and Workovers – CAW:**
November 30 - December 4

See the 2016 Schedule now at petroskills.com/catalog

For details on these or our other 250 sessions in the Gulf Coast, contact Patty Davis, (832) 426-1203 or patty.davis@petroskills.com, or see details and full selection at www.petroskills.com

Visualize the Possibilities



At Petrolink we see things a little more clearly.

You can too with our advanced real-time visualization tools. From customizable displays and collaborative environments to powerful analytics and reporting, we help you spot trends, gain insights and see the potential in your operations.

www.petrolink.com

petrolink

Rebuilding Together Houston

Rebuilding Together - Houston (RT-H) is Houston's largest community outreach organization working to preserve affordable home ownership and revitalize neighborhoods. They provide home repair and renovation services at no cost to low-income homeowners in need, such as the elderly, individuals with disabilities, veterans, and people impacted by natural disasters.

RT-H aims to help by constructing wheelchair ramps, installing handrails, installing doors with peepholes and security locks, and many other improvements that create an environment for the homeowner that is safe, warm, and dry.

RT-H needs volunteers of all experience levels to help with their Fall 2015 Home Repair Program, and the YP group will be leading teams for the October 17th and 24th session. We have had two productive Home Repair events over the past year, and we hope to continue that success. Come join us in a day of building, repairing, and giving back to the community!

EVENT INFO

SATURDAY

10.17 & 10.24

7:30 AM - 5:00 PM

EVENT CONTACTS

Danny Marquez

danny.marquez@bhpbilliton.com

Catalina Leal

catalina.leal@bakerhughes.com

AJ Gundepalli

venkata.gundepalli@gmail.com

MORE INFO

10.17.15

<http://www.spegcs.org/events/2998/>

10.24.15

<http://www.spegcs.org/events/2999/>

2016-17 SPE-GCS Scholarships

SPE-GCS scholarships are available to students who maintain a GPA of 3.0 or higher and are majoring in petroleum engineering, geology, or related discipline. Non-petroleum engineering or geology majors who complete an internship with a company in the Oil & Gas industry are also eligible.

The Requirements new applicants:

- Currently reside in Houston OR 29-county Gulf Coast area (Austin, Brazoria, Brazos, Burleson, Chambers, Colorado, Fayette, Fort Bend, Galveston, Grimes, Hardin, Harris, Jasper, Jefferson, Lee, Liberty, Madison, Matagorda, Montgomery, Newton, Orange, Polk, San Jacinto, Trinity, Tyler, Walker, Waller, Washington, and Wharton)
- Enroll in an engineering or science program at a university in the fall
- Currently be a high school senior
- Minimum SAT score of 1650
- Be a US citizen
- Completely fill out the scholarship form and turn in by deadline: 2.12.16
- High school transcripts
- Activities, awards and honors
- SAT and/or ACT score
- Professional reference letters
- Financial need (if applicable, not required)
- Short essay (approx. 500 words)

The Process:

- Scholarship committee reviews each application
- Selected applicants are interviewed in the second round (April 2016)
- After the interviews, the scholarship committee meets and collectively decides the 2016-17 scholarship recipients (May 2016)

EVENT INFO



APPLICATION & INSTRUCTIONS

<http://www.spegcs.org/scholarship-application-instructions/>

COMPLETED APPLICATIONS

gcs-scholarship@spemail.org

NOTE

Renewable yearly scholarship (\$2,000/semester, \$4,000/academic year) up to 4 years

Each 2016-17 first-time scholarship recipient may be eligible for a summer internship with an oil & gas company on availability.

Visit the SPE Gulf Coast Section homepage and select the Scholarship Committee page for more details.

Stop squeezing. Start expanding.



Success Rate

Solutions Matrix	Cement Squeeze	Solid Expandable
Longevity	Low	High
Isolation	Low to Medium	High
Integrity	Low to Medium	High

Save the cement! Contact the expandable tubular experts at Enventure to maximize the efficiency and value of your well.

www.EnventureGT.com

1.281.552.2200



ENVENTURE®

EXPAND YOUR POSSIBILITIES

SUBJECT MATTER EXPERTS

DESIGN
ANALYSIS
TESTING

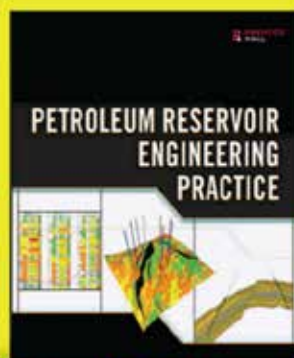
STRESS ENGINEERING SERVICES INC.

281.955.2900
www.stress.com

HOUSTON • CINCINNATI • NEW ORLEANS • BATON ROUGE • CALGARY

The Up-To-Date,
Practical Guide to Modern
Petroleum Reservoir
Engineering by
DR. NNAEMEKA EZEKWE

Available from Amazon.com,
informIT.com, and other
fine resellers.



PRENTICE HALL

informIT.com



**Is challenging
project
documentation
draining your
resources?**

WE can help with;

- ✓ Technical Writing
- ✓ Data Book Compilation
- ✓ Project Management
- ✓ Printing & Binding

ZAETRIC®

281-298-1878

www.zaetric.com

SPE-GCS 32ND Annual Tennis Tournament

The 32nd Annual Society of Petroleum Engineers Gulf Coast Section Tennis Tournament will be held on Thursday, November 5th, and Friday, November 6th, at the Houston Racquet Club, located at 10709 Memorial Drive in Houston, Texas. Proceeds from the tournament benefit the SPE-GCS Scholarship Fund, which supports college students studying petroleum engineering, math and sciences. In combination with other section functions, more than \$3 million in scholarships has been awarded to well-deserving students through this program since 1963.

In 2014, we had a very successful tournament with 115 players participating. Registrations and sponsorships raised \$35,000 in revenue. After tournament expenses, net proceeds of over \$9,500 were contributed to the SPE-GCS Scholarship Fund.

Sponsors are a welcome and essential part of making this event a success. All sponsors will be recognized in the tournament program and on the sponsorship billboard that is exhibited throughout the tournament. Please see the Sponsor Form for sponsorship levels. In-kind donations for ditty bags and door prizes are also accepted.

On behalf of the entire 2015 SPE-GCS Tennis Committee, we look forward to seeing everyone for two fun-filled days of tennis competition!

QUESTIONS

James Jackson
713-366-5704
James.Jackson
@Halliburton.com

LOCATION

The Houston Racquet Club
10709 Memorial Drive
Houston, TX 77024
713-464-4811
houstonracquetclub.com

START TIMES

Mixed Doubles
Begins Thursday
November 5th - 6:00 PM

Tournament Doubles
Begins Friday
November 6th - 9:00 AM

DEADLINE

October 30, 2015
Participation is limited!
Entries accepted on a
first-come, first-served basis.

Thursday / Friday
November 5 - 6

EVENT INFORMATION

There will be two flighted round robin events:
Mixed Doubles - Thursday evening, November 5th
Tournament Doubles - Friday, November 6th

The tournament doubles event is open to men and women and is a combined bracket. Partners may be of the same gender or mixed.

The committee will assist players who do not have a partner for any event.

FLIGHTING

Championship - Advanced Players
A - Regular & Advanced Players
B - Intermediate Players
C - Non-regular Players & Beginners

The SPE-GCS Tennis Committee reserves the right to allocate players to a different flight if necessary. Please rank yourself on the honor system.

WHAT TO EXPECT

Lots of tennis, meeting old friends and making new ones. Door prizes, T-shirts, awards, meals and beverages.

Thursday - Light dinner

Friday - Breakfast, lunch and snacks

Hit & Grab - Friday after lunch

Award presentations, door prizes & heavy appetizers - late Friday afternoon - 4PM

RULES OF ENTRY

The event is open to members, nonmembers, guests, and friends of SPE. The only restriction is that tennis professionals are not allowed.

REGISTRATION

Thursday, November 5th - 4:00 - 6:00 PM

Friday, November 6th - 8:30 - 9:00 AM

IMPORTANT NOTICE

All paid participants must wear their name tags during this event to have access to the food and drinks.

ENTRY FEE INFORMATION

\$125.00 per person - Fee covers Tournament and Mixed Doubles for an individual player.
\$50.00 for those only playing Mixed Doubles.
\$25.00 - Spouse/Guest (Not Playing)
Fees are due with entry form.

FOR REGISTRATION

www.spegcs.org/committees/tennis/

EVENT RECAP

SPE-GCS YP hosted its annual Roughneck Camp at the University of Houston Hilton Hotel on July 23rd. The theme for this year was “Technology and Innovation: Navigating Low Oil Prices.” The conference attracted over 160 students, interns and early career professionals. RNC Co-Chair Mikhail Alekseenko notes that the conference was successful in helping attendees find ways of adding value either for their current or prospective employers and in giving concrete examples of how the industry has coped with downturns in the past. “Speakers, panelists, and volunteers are what made this event a fantastic opportunity for attendees to think outside the box and to get a fresh perspective on the low-price environment we are currently in,” Mikhail says.



In just a few hours this is what SPE helped to achieve: 8,308 lbs. of food sanitized, sorted and packed; 6,923 meals prepared. This was a great opportunity to give back to the community while getting to know people from our industry.



SPE GCS YP hosted its annual Emerging Engineers Conference at Weatherford International on June 25th. The theme for this year was "Unconventional and Digital Oilfields: Countless Opportunities." The conference attracted over 140 professionals who are in the first ten years of their career. EEC has showcased a great list of top industry speakers, among them Janeen Judah, 2016 Society of Petroleum Engineers International President.



SPE GCS YP co-hosted a networking social with the SPE GCS Community Services Committee at Sage County on August 19th. This was a great opportunity to better connect the two groups, giving the regular YP Community Outreach volunteers a chance to learn more about additional volunteer opportunities within the section, and help the Community Services Committee widen its pool of volunteers.



PHDWIN™

Integrated Economics & Decline Curve Analysis

NOW EVEN MORE POWERFUL WITH

PHDRMS™

Reserves Management System

The *complete solution* for evaluating, managing, and reporting reserves and performance data.



Schedule an **online**
presentation
TODAY!

TRC Consultants, LC 888-248-8062 www.phdwin.com

PERFORATING & LOGGING EQUIPMENT

Meeting your exacting requirements.

Logging instruments | Perforating guns
and setting tools | TCP firing heads
Energetics | Wireline hardware
& selective firing systems



HUNTING

www.huntingplc.com

© 2015 Hunting

CleanMax

The future of
wellbore cleanup software



Pegasus Vertex, Inc. | Drilling Software
(713)981-5558 | info@pvisoftware.com

Dyna-Drill

Manufacturers of
Drilling Motor Components

- Mud Motor Power Sections (Sizes: 2 7/8" to 11 1/2")
- Coil Tubing Power Sections (Sizes: 1 11/16" to 3 3/4")
- Matrix-3® Coated Bearings

www.dyna-drill.com

Power That Lasts™



SPE-GCS STUDENT CHAPTER PAGE 2014-2015 AT A GLANCE TAMU-SPE

Over the school year, our chapter provided students with fantastic career development opportunities. We hosted 25 technical presentations, 3 training courses, 11 field trips, 12 soft-skills lectures, 12 community outreach activities, and 19 networking events! We look forward to continuing our events in the upcoming year. We hope you can join us! To learn more about our chapter, please visit our webpage at spe.tamu.edu, follow us on social media (Facebook, LinkedIn, Twitter, and Instagram), or contact us at: spe.officers@spe.tamu.edu



Fall Career Enhancement Event



Fall Career Enhancement Event



Freshman Rig Trip



SPE Clay Shoot



Outreach Events



Scotty's House Philanthropy Event

Student Chapter Directory

HOUSTON COMMUNITY COLLEGE

Raymond McCoy
rqm3rd@yahoo.com

RICE

Yichen Liu
astron.liuy@gmail.com

TEXAS A&M

Shawn Guice
shawnjuice16@tamu.edu

UNIVERSITY OF HOUSTON

Aziz Rajan
rajan.aziz@gmail.com



Fall Career Enhancement Event



At Weatherford International Facility Tour

SPE GULF COAST SECTION DIRECTORY

YOUR GUIDE TO YOUR ORGANIZATION LEADERS

Gulf Coast Section 2015-2016 Board of Directors

CHAIR

Ivor Ellul, CiSK Ventures
713-240-2740
iellul@ciskventures.com

VICE CHAIR

Deepak Gala, Shell
281-544-2181
deepak.gala@shell.com

PAST CHAIR

Jeanne Perdue, Occidental
713-215-7348
jeanne_perdue@oxy.com

SECRETARY

Gabrielle Guerre Morrow, RyderScott
713-750-5431
gabrielle_guerre@ryderscott.com

TREASURER

Alex McCoy, Occidental Oil and Gas
713-366-5653
alexander_mccoy@oxy.com

VICE TREASURER

David Flores
281-381-5828
david_p_flores@yahoo.com

Board Committee Chairs CAREER MANAGEMENT

Sunil Lakshminarayanan, Occidental
713-344-1249
sunil_lakshminarayanan@oxy.com

COMMUNICATIONS

Subash Kannan, Anadarko
832-201-4282
Subash.Kannan@anadarko.com

COMMUNITY SERVICES

Marissa Davis, Baker Hughes
281-231-3418
marissa.davis@bakerhughes.com

EDUCATION

Simeon Eburi, Chevron
832-854-3134
simeon.eburi@chevron.com

MEMBERSHIP

David McCalvin, McCalvin Enterprises
281-818-7504
david@mccalvinenterprises.com

PROGRAMS

Fady Chaban
832-387-7249
chabanf@gmail.com

SOCIAL ACTIVITIES

Jim Sheridan, Baker Hughes – retired
281-740-0913
sherim@operamail.com

TECHNOLOGY TRANSFER

Carol Piovesan, APO Offshore
281-282-9291
cpiovesan@apooffshore.com

YOUNG PROFESSIONALS

Chiedozie “Dozie” Ekweribe, Chevron
832- 854-7599
Dozie@chevron.co

DIRECTORS AT LARGE 2014-2016

Jenny Cronlund, BP
281-366-8966
jenny.cronlund@bp.com

Torrance Haggerty, T.R. Consulting
281-714-5472
thaggerty06@gmail.com

Eric Kocian, Exxon Mobil
832-624-7962
eric.m.kocian@exxonmobil.com

DIRECTORS AT LARGE 2015-2017

John “J.J.” Jackson, Unimin Corp.
832-247-0233
jsjackson@unimin.com

Alvin Barber, Schlumberger
713-689-2725
barber.spe@gmail.com

Mark Fleming, Suntrust Robinson Humphrey
832-603-2305
Mark.Fleming@SunTrust.com

SPE GULF COAST NORTH AMERICA REGIONAL DIRECTOR

J. Roger Hite, Inwood Solutions, LLC
713-385-5343
hite@inwood-solutions.com,

SECTION MANAGER

Kathy MacLennan, SPE-GCS
713-457-6813
kmaclellan@spe.org

SECTION ADMIN

Sharon Harris, SPE-GCS
713-457-6821
sharris@spe.org

Committee Chairs

AUXILIARY

Nancy Giffhorn
281-360-4631
rgiffhorn@aol.com

AWARDS BANQUET

Jeremy Viscomi,
Petroleum Technology Transfer Council
785-864-7396
jviscomi@pttc.org

CASINO NIGHT

Rini Assad, Scientific Drilling
713-447-7478
rini.assad@scientificdrilling.com

ESP WORKSHOP

Noel Putscher, Newfield
281-674-2871
nputscher@newfield.com

GOLF CO-CHAIRS

Cameron Conway, KB Industries
281-217-0660
cconway@kb-industries.com

Marc Davis, Champions Pipe and Supply
713-248-3956
mdavis@championspipe.com

Robin Smith, Halliburton
713-907-1694
robin.smith@halliburton.com

INTERNSHIPS

Open

NEWSLETTER

Lynn Ponder, Frontline Group
281-352-9164
editor@spegcs.org

OILSIM COMPETITION

Kristin Obenhaus, Frontline Group
281-453-6037
kobenhau@frontline-group.com

Lindsey Ferrell, Frontline Group
512-913-7112
lferrell@frontline-group.com

SCHOLARSHIP

Tanhee Galindo, Nexeo Solutions
832-823-1511
gcs-scholarship@spemail.org

SPONSORSHIP

John Vozniak, McCoy Global
281-513-7774
Jvoznia@mccoyglobal.com

SPORTING CLAYS

Paul Conover, NOV
713-346-7482
paul.conover@nov.com

TENNIS

James Jackson, Halliburton
713-366-5704
james.jackson@halliburton.com

WEB TECHNOLOGY

Shivkumar Patil, Aker Solutions
713-369-5352
Shivkumar.Patil@akersolutions.com

Study Group Chairs BUSINESS DEVELOPMENT

David Pantoja, Citi A&D Group
713-821-4715
david.pantoja@citi.com

COMPLETIONS & PRODUCTION

Jonathan Godwin
713-259-9726
jongodwin@hotmail.com

DIGITAL ENERGY

Rick Morneau, Morneau Consulting
281-315-9395
rickmorneau@outlook.com

DRILLING

Ernie Prochaska, NOV Downhole
832-714-3842
ernie.prochaska@nov.com

GENERAL MEETING

Robert Saucedo, ASHMIN
281-773-4135
rsaucedo@ashmin.com

HSSE AND SOCIAL RESPONSIBILITY

Trey Shaffer, Environmental Resources
Management (ERM)
281-704-3664

INTERNATIONAL

Barry Chovantez, Santander
713-850-9955
bchovanetz@yahoo.com

NORTHSIDE

Robert Estes, Baker Hughes
713-879-4414
robert.estes@bakerhughes.com

PERMIAN BASIN

Amy Timmons
281-384-0882
atimmons1114@att.net

PETRO-TECH

Jessica Morgan, Blackstone Minerals
713-929-1633
jmorgan@blackstoneminerals.com

PROJECTS, FACILITIES, CONSTRUCTION

Mark Faucher, TFG, LLC
713-212-9067
mfaucher@all-llc.com

RESEARCH & DEVELOPMENT

Kitty Harvey, Cameron
281-901-3245
Kitty.Harvey@c-a-m.com

RESERVOIR

Mohammad Tabatabaei, Marathon
713-553-5642
mtabatabaei@marathonoil.com

WATER & WASTE MANAGEMENT

Joe Kilchrist, Consultant
713-302-2727
jkilchrist@sbcglobal.net

WESTSIDE

Steve Loving, Core Laboratories, LP
713-328-2244
stephen.lovings@corelab.com

CONNECT INFORMATION

NEWSLETTER COMMITTEE

CHAIR | Lynn Ponder
editor@spegcs.org

AD SALES | Pat Stone
starlite1@sbcglobal.net

BOARD LIAISON | Subash Kannan

NEWSLETTER DESIGN | DesignGood Studio
designgoodstudio.com

SPE HOUSTON OFFICE

GULF COAST SECTION MANAGER
Kathy MacLennan | kmaclellan@spe.org

GCS ADMINISTRATIVE ASSISTANT
Sharon Harris | sharris@spe.org

HOURS & LOCATION
10777 Westheimer Road, Suite 1075
Houston, Texas 77042
P 713-779-9595 | F 713-779-4216
Monday - Friday 8:30 a.m. to 5:00 p.m.

PHOTO SUBMISSIONS

We are looking for member photos to feature on the cover of upcoming issues! Photos must be at least 9" by 12" at 300 DPI. Email your high resolution picture submissions to: editor@spegcs.org

CHANGE OF ADDRESS

To report a change of address contact:
SPE Member Services Dept.
P.O. Box 833836
Richardson, Texas 75083-3836
1.800.456.6863 | service@spe.org

CONTACT

For comments, contributions, or delivery problems, contact editor@spegcs.org.

ADVERTISE YOUR BUSINESS IN THE SPE-GCS NEWSLETTER

Connect is printed 12 times per year and contains premium positions for advertisers wanting to reach some of the most influential oil & gas professionals in the world.

For information on advertising in this newsletter or on the SPE-GCS website, please contact:

Pat Stone, Star-Lite Printing, Inc.
281-530-9711 / starlite1@sbcglobal.net



The Next Generation in Deepwater Completion Fluids

RENEWABLE • ENVIRONMENTALLY FRIENDLY • AVAILABLE NOW!

TETRA CS Neptune™ is the clear solution to the oil and gas industry's quest for a high-density solids-free, zinc-free and formate-free completion fluid for deepwater and complex high-pressure wells that require heavy clear brine solutions.

- Environmentally accepted zinc-free solution
- Zero-discharge system not required
- Formulated from renewable products, ensuring continuity of supply
- Can be reclaimed for reuse
- Requires no special mixing, handling or storage equipment at rigsite
- Can be formulated as a low-solids, reservoir drill-in fluid



Discover more about deepwater completion fluids innovations from TETRA Technologies at the 2015 Offshore Europe Conference, Stand 1K21.



SOCIETY OF PETROLEUM ENGINEERS GULF COAST SECTION

10777 Westheimer Road
Suite 1075
Houston, TX 77042

NON-PROFIT
ORGANIZATION
U.S. POSTAGE
PAID
PERMIT NO. 6476
HOUSTON, TX

October CALENDAR

SUNDAY	MONDAY	TUESDAY	WEDNESDAY	THURSDAY	FRIDAY	SATURDAY
				Research & Development		
				1	2	3
		Projects, Facilities & Construction Waste & Water Management		General Meeting	Auxiliary	Young Professionals
4	5	6	7	8	9	10
		Projects, Facilities & Construction Petro-Tech Northside	Drilling	Board of Directors		Community Service Rebuilding Together Houston
11	12	13	14	15	16	17
		Projects, Facilities & Construction The Career Cruise Oil Patch Orientation	Westside	Reservoir		Rebuilding Together Houston
18	19	20	21	22	23	24
		HSSE Projects, Facilities and Construction	Completions & Production Business Development			
25	26	27	28	29	30	31