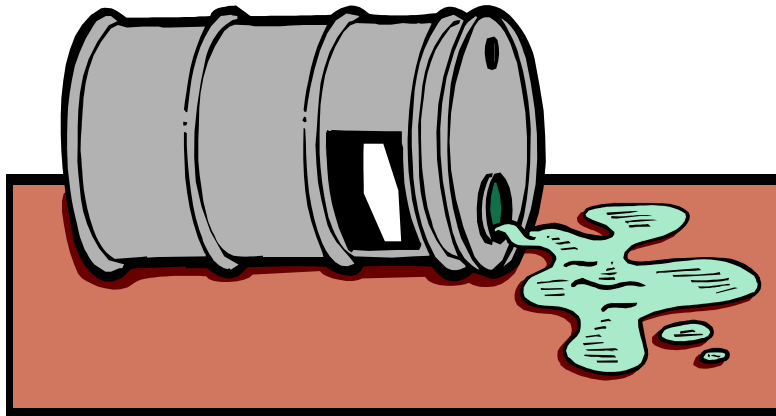


# Improving Safety and Environmental Performance

- Where is the Value?

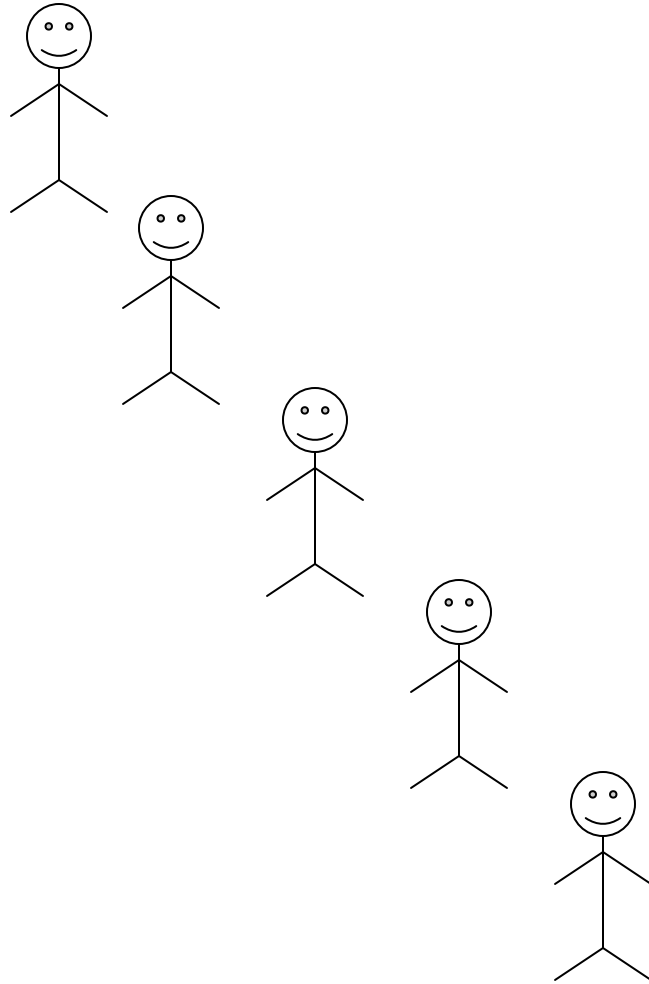


# Improving Safety and Environmental Performance

Where is the value?

- ✓ Functioning System
  - Assurance for critical controls
  - Everyone is pulling the same direction
  - Own/depend on the check/feedback

# Improving S&E Performance



Sr. leaders have no proactive assurance measures relative to critical contractor equipment

Company has no requirement for critical equipment control, or is not enforcing it

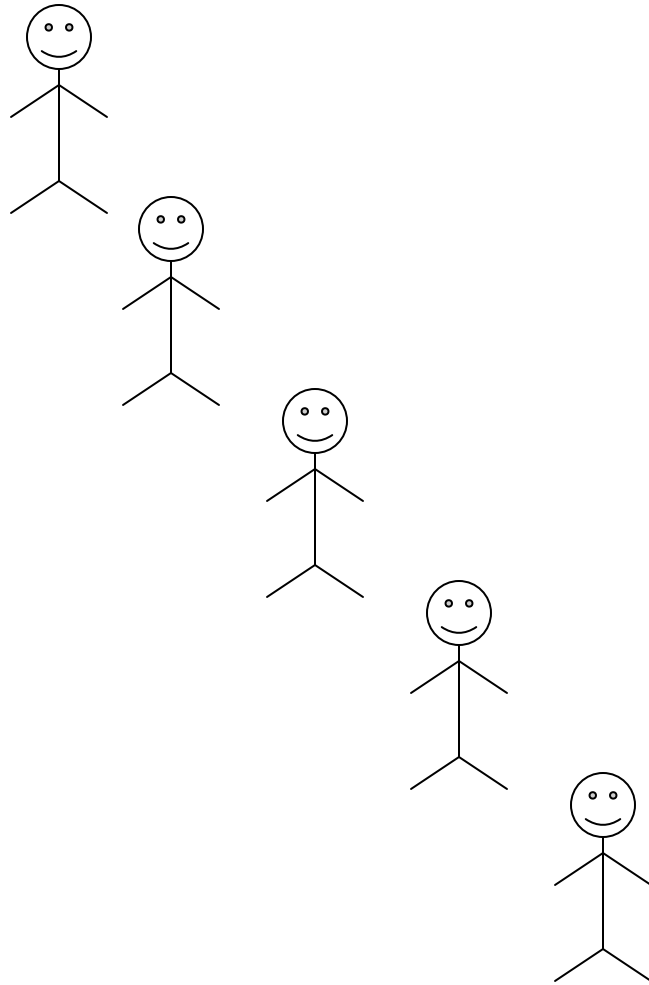
Drilling Company has no specifications or procedures for brake maintenance

Supervision not aware of proper adjustment

Improperly adjusted Draw-works Brake band springs

## Brakes Fail... Breaking Jaw

# Improving S&E Performance



Proactive assurance measures are not in place for heaters

Heaters not on critical equipment list

No heater check performed prior to freezing weather  
Entire box wired incorrectly, causing breaker to not work

Supervision not aware of the problem  
No Electrician available for small repairs

New Worker creates arc-flash while working hot

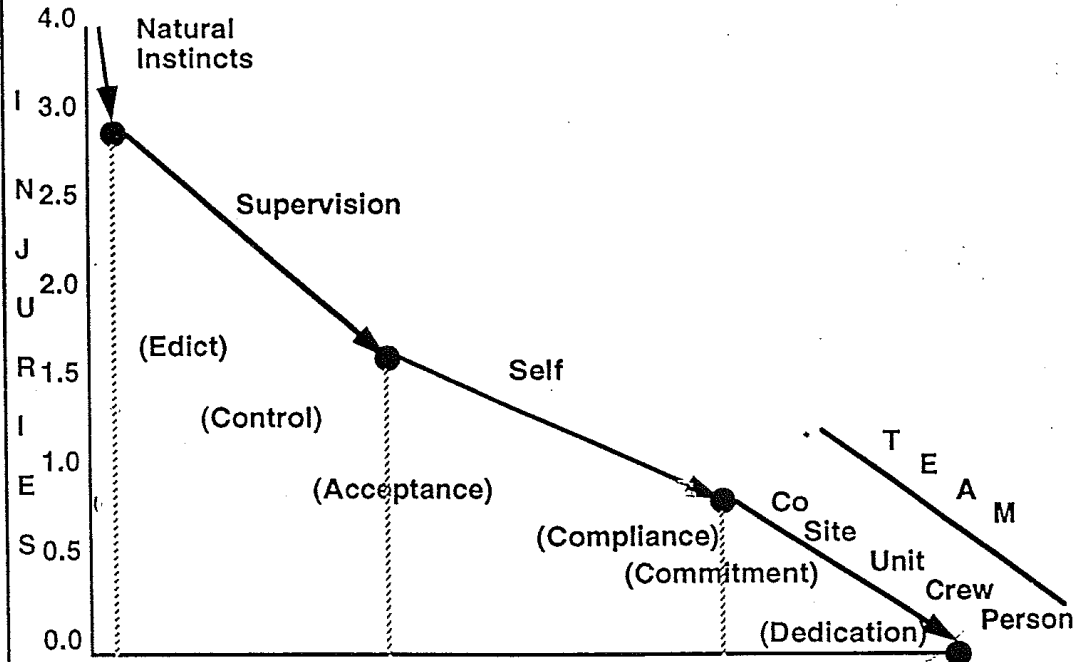
## Arc-Flash while working Hot

# Improving Safety and Environmental Performance

Where is the value?

- ✓ Functioning System
- ✓ Assurance for critical controls
  - Everyone is pulling the same direction
  - Own/depend on the check/feedback

# Injury Prevention



## Dependent

- Mgmt Commitment
- Cond Of Emplmt
- Fear/Discipline
- Law/Rules
- Procedures/Soc's
- Supv Control
- Reward/Recog
- Training
- Supv Emphasis
- Tests/Skill Demo
- Resources/Tools
- Supv Goals
- Caring Supv
- Value All People
- Heritage

## Independent

- Personal Commit
- Personal Stds
- Internalize
- Conform
- Pers Knowledge
- Self-Managing
- Indiv Recog
- Pers Development
- Personal Value
- Practice, Habits
- Pers Skills
- Personal Goals
- Care For Self
- "Zero Heroes"
- "A DuPonter"

## Interdependent

- Team Commitment
- Team Contributor
- Team Building
- Help Others Conform
- Team Knowledge
- Team Managing
- Team Recognition
- Team Development
- Others Keeper
- Team Practice
- Team Networking
- Team Goals
- Care For Others
- Value Each Other
- Company Pride

# Improving Safety and Environmental Performance

Where is the value?

- ✓ Functioning System
- ✓ Assurance for critical controls
- ✓ Everyone is pulling the same direction
- Own/depend on the check/feedback

# Improving Safety and Environmental Performance

## Check and feedback outcomes

- Get er done or get er done safely
- Follow procedure or establish a “work-around” culture
- Are key tools used to lower risk tolerance?
- Are you checking the effectiveness of previous CAs?
- Does time drive the operation or the right operation takes a certain amount of time?

# Improving Safety and Environmental Performance

Check and feedback outcomes

- Do you expect “on the fly” operational change or rigorous execution?
- Are tools and equipment what you need or what you have?
- Do we learn broadly from incidents or focused on the local fix?
- Do we share ownership for success and failures?

# Improving Safety and Environmental Performance

Where is the value?

- ✓ Functioning System
- ✓ Assurance for critical controls
- ✓ Everyone is pulling in the same direction
- ✓ Own/depend on the check/feedback